

**Trent-Sow Parklands  
and Cannock Chase  
AONB HS2 Group**

## **Design and Environmental Enhancement Plan**

### **Part 2: Environmental Enhancement Plan**

**Draft report**  
Prepared by LUC  
March 2021



## Trent-Sow Parklands and Cannock Chase AONB HS2 Group

### Design and Environmental Enhancement Plan Part 2: Environmental Enhancement Plan

**Project Number**  
10726

Version	Status	Prepared	Checked	Approved	Date
1.	First draft	V Roberts K Ahern R Hammonds	V Roberts	K Ahern	11.01.2021
2.	Final draft	A Breen V Roberts	V Roberts	K Ahern	02.03.2021
3.	Final report	R Hammonds	V Roberts	K Ahern	15.03.2021

Bristol  
Edinburgh  
Glasgow  
London  
Manchester  
  
landuse.co.uk

Land Use Consultants Ltd  
Registered in England  
Registered number 2549296  
Registered office:  
250 Waterloo Road  
London SE1 8RD

100% recycled paper

Landscape Design  
Strategic Planning & Assessment  
Development Planning  
Urban Design & Masterplanning  
Environmental Impact Assessment  
Landscape Planning & Assessment  
Landscape Management  
Ecology  
Historic Environment  
GIS & Visualisation



FS566056



EMS566057



OHS627041



# Contents

<b>Chapter 1</b>					
<b>Introduction</b>	<b>1</b>				
Background	1				
Aims and purpose	2				
Project Area – a special landscape	2				
The Design Principles	2				
Outside Act Limits and Enhancement Projects	2				
The Review Group	4				
Document structure	4				
<b>Chapter 2</b>					
<b>Vision and context</b>	<b>5</b>				
Vision	5				
Summary of the General Design Principles	5				
<b>Chapter 3</b>					
<b>Process for identifying projects</b>	<b>10</b>				
Creating the longlist	11				
Shortlisting	13				
Consultation on the shortlisting	13				
Project development	14				
Further shortlisting	14				
		Final presentation of projects	15		
		<b>Chapter 4</b>			
		<b>The Environmental Enhancement Projects</b>	<b>16</b>		
		Project A – Shugborough Estate Gardens, Chinese House and Cats Monument	17		
		Project B – Trent and Sow Washlands	20		
		Project C – Connecting Towpaths	24		
		Project D – Ingestre Orangery Garden	27		
		Project E – Shugborough Woodpasturescape	31		
		Project F – Changing Landscapes	35		
		Project G – Revealing Tixall's Halls	39		
		<b>Chapter 5</b>			
		<b>Summary and next steps</b>	<b>42</b>		
		Overview	42		
		Next steps	46		
		<b>Appendix A</b>			
		Prioritisation criteria	A-1		
		<b>Appendix B</b>			
		Long list of projects	B-1		
		<b>Appendix C</b>			
		Stage 1 proforma template	C-1		
		<b>Appendix D</b>			
		Scoring of Stage 1 applications	D-1		
		<b>Appendix E</b>			
		Stage 2 Proforma template	E-1		
		<b>Appendix F</b>			
		Minutes from the Stage 2 EEP presentation 03.11.20	F-1		
		<b>Table of Figures</b>			
		Figure 1.1: Project area, HS2 line and HS2 Act Limits	3	Figure 4.2: Location of Project B – Trent and Sow Washlands	20
		Figure 3.1: Process followed for identifying projects	11	Figure 4.3: Location of Project C – Connecting Towpaths	24
		Figure 4.1: Location of Project A – Shugborough Estate Gardens, Chinese House & Cats Monument	17	Figure 4.4: Location of Project D – Ingestre Orangery Garden	28
				Figure 4.5: Location of Project E – Shugborough Wood Pasturescape	31
				Figure 4.6: Location of Project F – Changing Landscapes	35
				Figure 4.7: Location of Project G – Revealing Tixall's Halls	39
				Figure 5.1: Total benefits of the Enhancement Projects and how they contribute to HS2's Green Corridor Benefits	42
				Figure 5.2: Visual masterplan showing Environmental Enhancement Projects and the HS2 line within the Trent-Sow landscape	43
				Figure 5.3: Environmental Enhancement Projects themes	44
				Figure 5.4: Environmental Enhancement Projects benefits	45
				Figure 5.5: Split of enhancement funding by project	46
				Figure 5.6: Balance of organisations receiving funding	46

## Contents

Trent-Sow Parklands and Cannock Chase AONB HS2 Group - Environment Enhancement Plan  
March 2021





Trent and Mersey Canal, Great Haywood

## Chapter 1

### Introduction

**This report presents the process for identifying, developing and endorsing projects for Part 2 of the Trent Sow Parklands and Cannock Chase AONB Design and Environmental Enhancement Plan.**

### Background

**1.1** High Speed 2 (HS2) Phase 2a (West Midlands to Crewe), passes through and close to a notable collection of nationally and locally important landscapes in Staffordshire. These include the washlands at the confluence of the rivers Trent and Sow; the historic designed landscapes of Shugborough, Ingestre and Tixall; 18th and 19th century transport infrastructure; the Conservation Areas of The Trent & Mersey Canal, Staffordshire & Worcestershire Canal, Ingestre, Tixall, Great Haywood and Shugborough, and Colwich and Little Haywood; together with numerous listed buildings and environmental designations. Part of this landscape is within or in the setting of the Cannock Chase Area of Outstanding Natural Beauty (AONB).

## Aims and purpose

**1.2** The integration of HS2 within this special landscape requires careful consideration through design to mitigate the scheme and its effects. The overall aim of this commission was to develop a Trent-Sow Parklands and Cannock Chase AONB Design and Environmental Enhancement Plan (EEP) comprising the following elements:

- Stage 1: Design Principles - both general and detailed principles, for works across the project area. This stage was completed in January 2020.
- Stage 2: Environmental Enhancement Plan – for enhancement projects located outside the Act Limits. A budget of up to £1.5m has been made available for the Review Group to spend on enhancement projects. The EEP is primarily concerned with identifying optimal ways of using this dedicated budget which fit the vision and collectively create substantial environmental benefits for the Project Area. This report presents this second stage of the commission.

**1.3** The (EEP) projects have been developed building on the Design Principles developed in the first stage. These projects are to be implemented alongside the construction and subsequent operation of HS2, integrating the railway in the landscape.

## Project Area – a special landscape

**1.4** The project area (see **Figure 1.1**) was developed in collaboration with the Review Group at Stage 1 to provide a focus for both the Design Principles and the Enhancements Projects.

**1.5** The area covers just over 3,500ha, extending approximately 3.0km north and south from the HS2 centre line.

## The Design Principles

**1.6** General Design Principles (GDP) and Detailed Design Principles (DDP) were developed by the Review Group to be used as guidance by HS2 and its contractors to inform the general and detailed design of the Scheme, with the aim of creating a locally responsive, high quality

design through this important and environmentally sensitive landscape. This stage of work was completed in February 2020.

**1.7** The GDPs are arranged into five themes with an overarching principle of Quality. The five GDP themes are:

- Communities
- Access, Enjoyment and Connectivity
- Landscape
- Historic Environment
- Ecology and Hydrology

**1.8** Each of these five GDPs relate to different aspects of integration with the area's special character and qualities. These GDPs aim to ensure that proposals are appropriate to this special character. The GDPs are outlined in **Chapter 2**.

## Outside Act Limits and Enhancement Projects

**1.9** The Review Group has the responsibility to develop and propose a package of environmental enhancements, which go beyond the mitigation measures provided as part of the Scheme. These will be outside Act Limits<sup>1</sup> but within the Project Area. **Figure 1.1** illustrates the project area and the extent of the HS2 Act Limits.

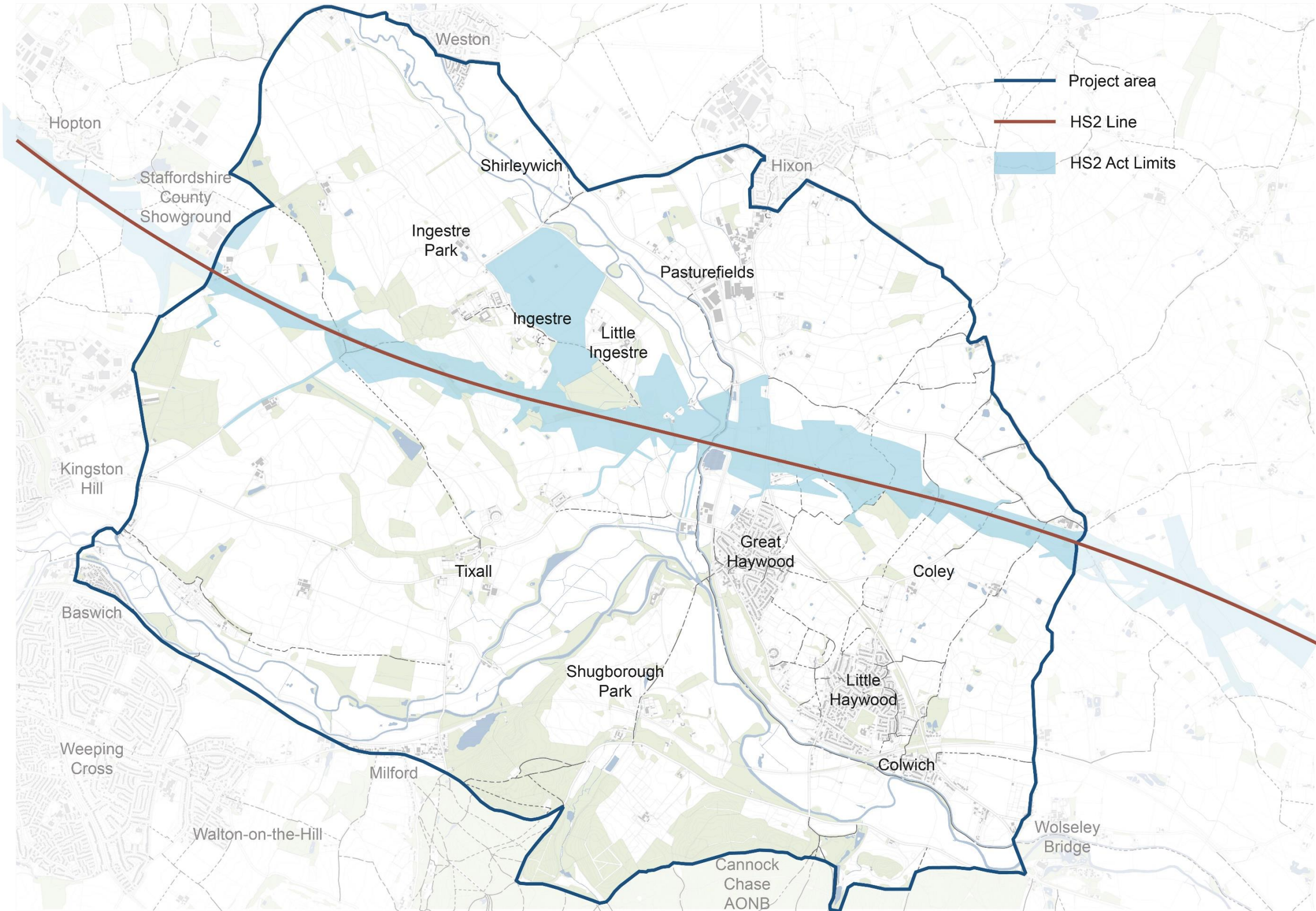
**1.10** The GDPs and to a lesser extent DDPs apply equally to Enhancement Projects. Quality and landscape fit are equally important on either side of the Act Limits line. This report summarises the background, process of selection and detail of these Enhancement Projects.

---

<sup>1</sup> The Act Limits have been taken from the 2019 HS2 documents, which include land needed to build and operate the railway.



Figure 1.1: Project area, HS2 line and HS2 Act Limits



## The Review Group

**1.11** The Trent-Sow Parklands and Cannock Chase AONB HS2 Group, 'the Review Group', was established in 2018 during the passage of the HS2 Phase 2a Bill through Parliament. The Review Group was formed to assist the nominated undertaker in achieving a high standard of design for key design elements and mitigation measures, in response to the reported impacts of the HS2 Phase 2a Scheme, 'the Scheme', on an area of high historic interest, landscape value and environmental sensitivity.

**1.12** The Review Group comprises the following members:

- Canal and River Trust (CRT)
- Cannock Chase AONB Partnership
- Historic England (HE)
- HS2
- Inland Waterways Association (IWA)
- National Trust (NT)
- Natural England (NE)
- Sandwell Borough Council (SBC)
- Staffordshire County Council (SCC)
- Staffordshire Wildlife Trust
- The Landmark Trust

**1.13** Staffordshire Borough Council have attended a number of meetings, mindful of the Council's position as a qualifying authority.

**1.14** The purpose of the Review Group is to develop a set of general and detailed design principles that would be used as guidance by HS2 and its contractors to inform the general and detailed design of the Scheme in order to create a locally responsive, high quality design through this important and environmentally sensitive landscape. To inform the Review Group's design principles, HS2 developed the 'Phase 2a Great Haywood Illustrative Design Plan' (see

Figure 1.2 of A design guide for HS2 - Part 1, Design Principles, LUC 2020) which sets out HS2 design principles for the area at the Project's current design stage. The Terms of Reference (ToR) of the Review Group recognise that HS2 will have due regard to the outputs of the Design Principles as far as is reasonably practical, providing they:

- do not impact the timely, economic and safe delivery, or operation, of the railway;
- be consistent with HS2 Phase 2a Environmental Minimum Requirements; and
- be relevant to the grounds on which the relevant planning authority would be entitled to refuse approval under Schedule 17 to the Act.

## Document structure

**1.15** The Environmental Enhancement Plan (EEP) details the projects approved by the Review Group and HS2 for integration or enhancement works / initiatives in the project area but outside of Act Limits. This document links to the Design Guide (finalised January 2020) which is intended to guide detailed design and delivery of the project vision for the area.

**1.16** The EEP presents:

- The Vision
- The General Design Principles
- The process for identifying projects
- The Environmental Enhancement Projects
- Summary overview and next steps





Bottle Lodge, Tixall ©AnneAndrews

## Chapter 2

### Vision and context

#### Vision

**Conserving and enhancing the area's special character and qualities to provide lasting benefit for its communities.**

#### Summary of the General Design Principles

**2.1** The GDPs provide overall guidance for delivery of the Vision. This guidance applies irrespective of whether proposed initiatives lie within the Act Limits or the wider project area.

**2.2** The principles have evolved from early work undertaken as part of the Great Haywood Illustrative Design Plan (May 2010) and finalised by the Review Group in Summer 2019. The GDPs are arranged into five themes with an overarching principle of Quality. The five GDP themes are:

- Communities
- Access, Enjoyment and Connectivity
- Landscape
- Historic Environment
- Ecology and Hydrology

**2.3** Each of these five GDPs relate to different aspects of integration with the area's special character and qualities. These GDPs aim to ensure that proposals are appropriate to this special character.

**2.4** The five GDPs apply to:

- Within Act Limits (1)
- Outside Act Limits (2); it is these aspects that specifically apply to the EEPs.



Chapter 2  
Vision and context

Trent-Sow Parklands and Cannock Chase AONB HS2 Group - Environment Enhancement Plan  
March 2021



Tixall Lock ©AnneAndrews



Shugborough Estate ©Daderot



Great Haywood Canal Bridge



Tixall Gatehouse ©AnneAndrews



Ingestre Hall ©FelixPepler



Riparian Alluvial Lowland LCT from Mill Lane bridge looking north east over River Trent



## Communities

### Aspiration

**2.5** Supporting the residential, commercial and recreational communities and rural areas affected by HS2 (1 and 2), engaging them in the development of the Enhancement Plan and user-led ideas for potential Enhancement Projects to create a lasting legacy, and foster a sense of local ownership. (2)

### General Design Principles

- Understand the visual, physical and cultural importance of the area to communities and stakeholders, seeking opportunities to address their needs and aspirations, as well as provide wider social, economic and environmental benefits. (1 and 2)
- Integrate and support community benefits, local economies and promote sustainability, health and well-being, culture, biodiversity and art. (1 and 2)
- Encourage communities and stakeholders to take an active part in developing and implementing the Enhancement Plan including establishment of community led Enhancement Projects. (2)
- Provide opportunities for the community to better connect to the natural and historic environment, increasing awareness of the area, heritage, landscape and biodiversity. (2)
- Consider the needs of communities in the analysis and evaluation of Enhancement Projects to support community led schemes, including improvements to footpaths and tow paths. (2)
- Support the enhancement of visitor facilities and attractions to support communities affected by HS2. (2)



## Access enjoyment and connectivity

### Aspiration

**2.6** A connected landscape minimising severance for people between settlements, providing Green Infrastructure links and connectivity along the waterway networks of the Staffordshire & Worcestershire Canal, Trent & Mersey Canal and the River Trent. People in the local settlements are able to access the local environment and landscape and its historic elements both physically and perceptually. (1 and 2)

### General Design Principles

- Protect and enhance existing rights of way and permissive routes and positively promote new circular routes to replace routes that have been severed and link into the established linear routes. (1 and 2)
- Respect existing public rights of way and recreational areas, including views, in the design of environmental mitigation and enhancement projects. (1 and 2)
- Promote quiet, slow enjoyment of the area on land and water, exploring opportunities to create attractive traffic free routes and dedicated places for angling. (2)
- Improve and enhance access to allow for multiuser connections including connections to the National Cycle Network. (2)
- Create east-west links between Stafford, settlements in the study area and the wider Trent valley to connect with this special and valued landscape. (2)
- Provide access to and understanding or interpretation of key historic landscape assets and elements e.g. through the use of boards, 'apps' and/ or postcards. (2)
- Promote recreational use of the waterway corridors and where possible enhance and establish routes, access points and associated facilities to support use of the rivers and canals. (2)
- Improve way finding and interpretation on existing and promoted routes. (2)
- Provide new and enhanced access to the landscape, heritage and wildlife of the area, which could include the use of community walking routes and interpretation 'apps'. (2)
- Protect and enhance the waterway corridor routes and facilities for powered boating and paddle sports. (2)





## Landscape

### Aspiration

**2.7** A slow, secluded and tranquil landscape, reinforcing and protecting the strong sense of place, maintaining local diversity and contrast between the distinctive elevated Chase to the south, valleys, open agricultural and wooded historic landscapes. A conserved, managed and restored network of canals and rivers, streams, wetlands, floodplain and water meadows, hedgerows, woodland, wood pasture, heathland and designed parkland landscapes. (1 and 2)

**2.8** A multi-functional landscape providing benefits for farming and food production, nature, flood control, carbon storage, soil, air and water quality, recreation, access, enjoyment, health and well-being. (2)

### General Design Principles

- Respect the open valley landscape and open, long views, maintaining the contrast and visual connection between open valley bottom and wooded hills. (1 and 2)
- Re-connect existing patterns of vegetation to integrate HS2 including the network of ancient woodland, species-rich hedgerows, flood meadows and water meadows, wood pasture and heathland, reinforcing a sense of place. (1 and 2)
- New structures to respond sympathetically to their context and setting, including form, scale and massing, layout and materiality using innovative design and techniques. (1)
- Landscape earthworks and planting to integrate HS2 into the surroundings, considering the wider landscape character and the scale and form of new landscape elements, including grading the viaduct embankments allowing planting to tie into the wider vegetation pattern, where possible. (1 and 2)
- Conserve the tranquil and secluded character through appropriate visual and noise mitigation. (1)
- Relate new woodland planting to the landscape character, interpreting where there is a precedent for woodland and tree planting (including natural regeneration) to restore landscape integrity, to filter and channel views and reduce perceived linearity of the alignment. (1 and 2)

- Respond positively to existing landscape function and habitat e.g. wetland enhancement which complements the pattern of water meadows on the valley floor, and wood pasture or heathland restoration and enhancement to link into wider initiatives on the Chase. (2)
- Recognise the unique landscape character of the canal corridors through the landscape, considering the balance and importance of openness and enclosure. (1 and 2)
- Seek opportunities to provide multi-user connections and improvements to tow paths along the canals. (2)



## Historic environment

### Aspiration

**2.9** Celebration and enjoyment of the rich historic fabric through conservation, restoration, enhancement and management of historic assets including canals and agricultural heritage and the designed landscape. An enhanced setting emphasising key viewpoints and improved access provides interpretation and promotion of history. (1 and 2)

### Historic Environment: General Design Principles

- Conserve and enhance natural and built features of historic interest in the landscape. Promote wider understanding and access to areas of historic interest. (2)
- Promote and provide interpretation of historic assets. (2)
- Interpret the historic pattern of ancient woodlands, parkland trees, wood pasture, tree groups and linear belts to inform appropriate locations for woodland creation to help integrate HS2. (1 and 2)
- Use selective tree planting, consolidation and felling to filter views and emphasise positive historic views, allowing the significance of the asset to be appreciated. (1 and 2)
- Consider and conserve the setting of natural and built features of historic interest. (1 and 2)
- Conserve, restore, enhance and manage the canal network and associated vernacular buildings and features. (2)



## Ecology and hydrology

### Aspiration

**2.10** An enhanced, re-created and re-connected mosaic of habitats incorporating the existing ecological priorities and landscape pattern of the area, in line with the 'more, bigger, better and joined' Lawton Principles. Enhanced habitat and biodiversity through careful species selection, reflecting local species compositions and habitats, creating resilience to pest, disease and climate change. (1 and 2)

### General Design Principles

- Conserve, restore, re-connect and re-create habitats to reflect the historic pattern, including wetland, water meadows and floodplain meadows, ponds, saline habitats, restoration of natural river channel features, connected ancient woodland, heathland and wood pasture. (1 and 2)
- Create broadleaved woodland and restore species-rich hedgerows using local species composition to connect habitat and provide visual integration to mitigate the new railway and enhance the wider landscape. (1 and 2)
- Integrate balancing ponds and drainage into the landscape, respecting the existing drainage pattern through creating new and enhanced habitats with marginal, woodland and hedgerow planting including natural regeneration to reduce flood risk. (1 and 2)
- Seek opportunity to identify and treat invasive non-native species. (1 and 2)
- Respect mature and veteran trees, managing them to provide increased biodiversity. (1 and 2)
- Provide a diverse age and species structure to increase longevity and resilience to pests, diseases and climate change in planting specifications for new planting. (1 and 2)
- Create opportunities for connectivity and habitat for all species, specifically protected and notable ones, including otter and bats, to mitigate habitat severance across the wider landscape. (1 and 2)





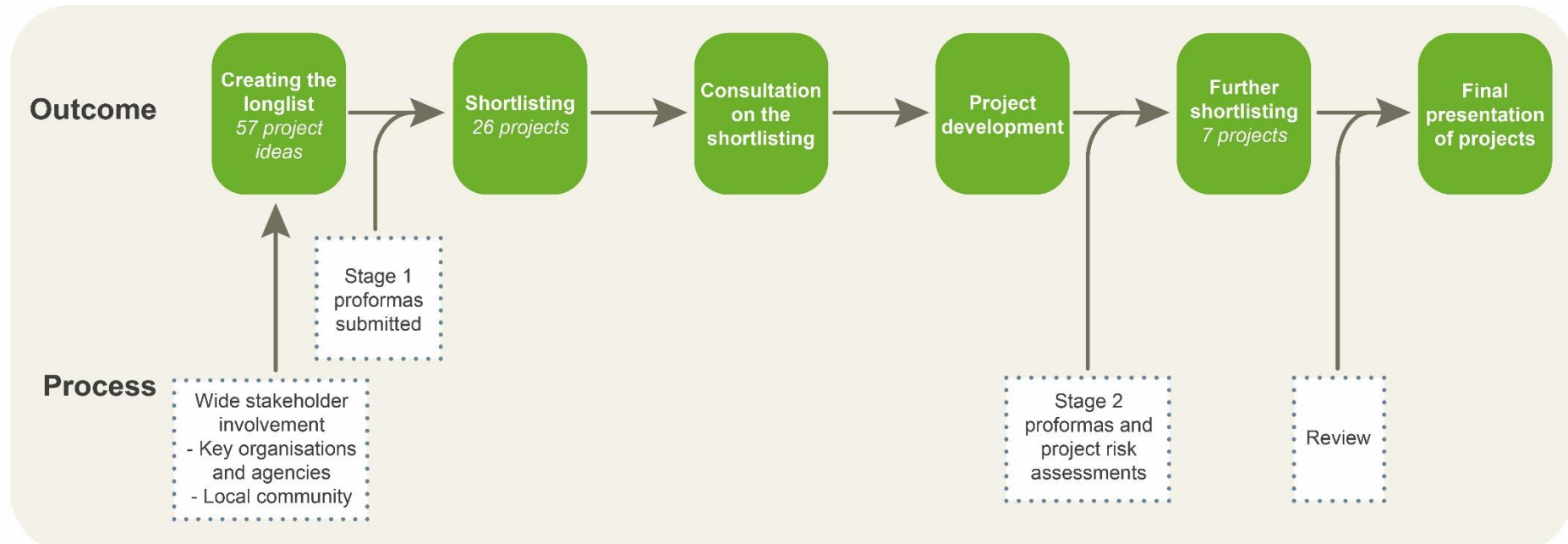
## Chapter 3

### Process for identifying projects

**This chapter presents the process followed for identifying the projects.**

**3.1** The process for identifying Environmental Enhancement Plan projects built on the work of the Design Principles. A partnership approach was taken which included working with the Review Group, stakeholder groups and wider public to harness their considerable local knowledge and understanding of local needs through an extensive consultation process as outlined here.

Figure 3.1: Process followed for identifying projects



### Creating the longlist

**3.2** An initial longlist of proposed projects was developed between June and October 2019 involving a wide range of stakeholders through a number of consultation events. The list included:

- suggestions put forward by the Review Group,
- proposals made through workshops with stakeholder groups and the wider public, and
- suggestions put forward by LUC following the desk study review of information about the area and building on work completed on the Design Principles.

**3.3** HS2 provided an assurance to the Review Group that it would 'fund reasonable measures that align with purpose and scope of the Group up to a combined total value of £1.5 million' and are 'within the Group's area of remit but outside of Bill limits' (14 May 2018). The projects will form part of an 'HS2 Environmental Enhancement Plan'.

**3.4** All projects must therefore meet the following eligibility criteria:

1. Be situated beyond Bill limits
2. Lie within the Group's study area



### Chapter 3

#### Process for identifying projects

Trent-Sow Parklands and Cannock Chase AONB HS2 Group - Environment Enhancement Plan  
March 2021

**3.5** The Review Group were given broad prioritisation criteria which gave the parameters for eligible projects (**Appendix A**) as follows:

- Supports the DP and Project Vision
- Helps integrate the HS2 scheme into the environment, and / or provides enhancements within the wider project area
- Complies with the published objectives as outlined in the Design Principles
- Delivers a range of benefits, for landscape character, heritage, biodiversity, recreation and access, water, the community and local economy.
- Offers value for money, realising maximum benefits for the HS2 corridor at an appropriate cost
- If it has long-term viability and can be sustained with long-term management arrangements and resources secured.
- If the project is deliverable and achievable within an agreed time period. It does not require substantial investment in staff/resources or involve a high level of risk

**3.6** Workshops were held to engage the wider public and understand local needs and aspirations. These workshops involved informal round-table discussions with participants illustrating their thoughts on maps and identifying needs and project ideas. The five main

themes of the GDP were used to focus discussion: Community; Access, enjoyment and connectivity; Ecology and Hydrology; Historic Environment; Landscape.

**Table 3.1: Stakeholder workshops**

Date	Place	Attendees (representatives of)	Purpose
24.07.19	Ingestre Orangery	Ingestre with Tixall PC, Colwich PC, Hixon PC, County Councillors	Workshop to inform local Parish Councillors and County Councillors about the funding available and discuss possible projects.
11.09.19	Great Haywood Memorial Hall	Hixon PC, FOSSA, The Ingestre Orangery, West Midlands Bird Club	Workshop to inform local interest groups about the funding available and to discuss possible projects.
11.09.19	Great Haywood Memorial Hall	Colwich PC, Plastic Free Colwich, The Haywood Society	Open meeting for the general public to learn more about the funding available and comment on projects to take forward.
06.11.19	Tixall Village Hall	Local interest groups/Parishes	To sense check scoring of shortlisted projects.



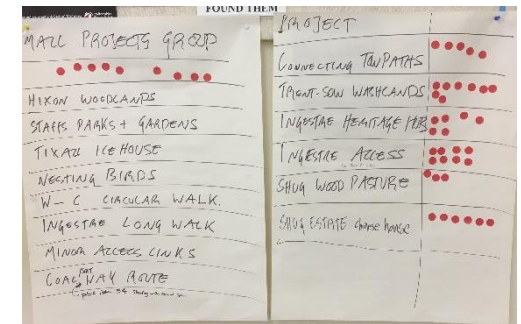
Stakeholder workshop, 06.11.2019



Reviewing the shortlisted projects



Voting for top three projects



Results of the local interest group vote

## Chapter 3

### Process for identifying projects

Trent-Sow Parklands and Cannock Chase AONB HS2 Group - Environment Enhancement Plan  
March 2021

**3.7** Discussion at the workshops found some common suggestions for projects emerging. These included:

- improvements to access around Ingestre,
- improved accessibility and connectivity to towpaths,
- improved access to Cannock Chase across the A513,
- promotion of heritage routes,
- habitat improvements for wildlife (most notably hares, pollinators, and wetland and farmland birds), including naturalising river and canal edges with planting,
- safe off-road routes between Hixon, Great Haywood, Little Haywood, Tixall and Stafford,
- recording local heritage.

**3.8** The process of stakeholder engagement raised awareness of needs and common themes and the aim throughout was to ensure that these were considered in developing the final projects. The long list of potential projects emerging from the workshops were refined through the EEP process, into deliverable projects, with the aim that the agreed final projects to meet a wide range of needs and aspirations for the area.

**3.9** A total of 57 project ideas were proposed on the long list (**Appendix B**) arising from the workshops. Project proposers were invited to complete a short Stage 1 proforma proposal form to provide more detail (**Appendix C**). Where there was no project lead to develop a proforma, where possible, smaller projects were either incorporated into other projects, or where clusters of complementary projects could be grouped, these were combined to create larger projects. Proformas for these were compiled by LUC. The Review Group Project Manager also supported some community groups to develop their projects and complete the proformas.

**3.10** A deadline of 24 October 2019 was given for final Stage 1 proformas.

**3.11** Twenty-three project proposals from the long list were not developed into a Stage 1 proforma. There were various reasons behind these individual decisions; where there was no obvious project lead, where projects were within Bill Limits, beyond the scope of the £1.5m budget, or where projects could be funded through another more specialist funding stream such as the HS2 Communities Fund.

**3.12** Twenty-one individual project proformas were submitted, with a further 13 proposals from the Long List grouped across five projects. A total of 26 project proformas were received.

### Shortlisting

**3.13** The 26 Stage 1 project proformas were reviewed against the prioritisation criteria by the Review Group Project Manager and LUC on 28 October 2019. Primarily, discussion focused on whether there would be any risks to project delivery that could prevent project implementation. Each project was then reviewed and discussed in detail before being given a score for how well it complied with the prioritisation criteria scores set out in **Appendix A**. The results of the scoring are detailed in **Appendix D**. Projects with a score of 18 or more and a score of 5 for deliverability were taken forwards.

**3.14** The results provided a clear group of six larger projects that scored well against the criteria, and eight smaller projects that could fall under the umbrella of a small projects group. The rationale for the small projects group was to provide a supportive framework for community groups to access funding for local community schemes. An overseeing body would hold a proportion of funding to be made available to eligible projects that met the prioritisation criteria. This would also help ensure that the funding is accessible for projects delivered by larger organisations as well as smaller community groups.

### Consultation on the shortlisting

**3.15** A further workshop on 6 November 2019 at Tixall Village Hall was held to share the prioritisation process with local interest groups, review the shortlist and comment on projects to take forward.

**3.16** Participants were asked to vote for their top three projects. Although there was broad support for all projects, the most popular projects were the small projects group, the Trent-Sow Washlands, and the Ingestre Access project.

**3.17** In the afternoon on 6 November, a further meeting was held with the Review Group where the findings of the shortlisting and the results of the morning workshop were presented and discussed. This meeting was to sense-check the scoring of the short-listed projects with the Review Group. The shortlisted projects were approved by the Review Group and HS2 to progress to the next stage of development.

## Chapter 3

### Process for identifying projects

Trent-Sow Parklands and Cannock Chase AONB HS2 Group - Environment Enhancement Plan  
March 2021

## Project development

**3.18** Project leads were given time and guidance to develop their projects further. Project leads were asked to complete a more detailed Stage 2 proforma form and project risk assessment (**Appendix E**). This included information on the local need and context for the project, method for implementation, timescales, budget, consents required, key partners, outcomes, how the project would deliver against HS2 Green Infrastructure benefits, long term management and sustainability including monitoring or project outcomes, and experience and expertise of delivering organisation.

**3.19** The COVID-19 pandemic in 2020 led to the deadline for Stage 2 project proposals being delayed until the end of September 2020.

## Further shortlisting

**3.20** The applications were further shortlisted by the Review Group Project Manager and LUC on 6 October 2020. Seven full project proposals were submitted for review:

- a. Shugborough Estate Gardens
- b. Trent Sow Washlands
- c. Connecting Towpaths
- d. Ingestre Orangery Garden
- e. Shugborough Woodpasturescape
- f. Changing Landscapes (Ingestre Hall)
- g. Revealing Tixall's Halls

**3.21** Each project was reviewed and discussed in detail. Further information was requested from applicants where gaps in understanding remained, with issues closed off prior to presentation of the projects to the Review Group on 3 November 2020 where possible (**Appendix F**).

## Project changes to the shortlist

**3.22** Several projects that had been highlighted as being of promise at earlier stages that were not developed into Stage 2 applications.

**3.23** The Ingestre Access Connections Project (43) was one such project. This aimed to develop circular walks and bridleway connections through Ingestre Park. It was a significant project with many community benefits and support. Landowner permission and other considerations, including unknown ownership and rights of way disputes, and the routes relationship to Act Limits mean that it has not been possible to progress this project at the current time. In the future, resolution of disputes may mean that part of the project could be deliverable. It was suggested to the Review Group that this popular project could continue to be supported by developing work undertaken to date as a feasibility study.

**3.24** Ingestre Hall's Changing Landscapes (f) project was a late submission, with a Stage 1 and Stage 2 application submitted in tandem. The application was subject to the same scoring process as previous project applications, and achieved a score of 18 which was sufficient to take forward. This project is less developed than the other proposals, however the proposal offers a strong community focus which is complementary to the other projects, and it was decided that this was an important project to discuss further at the 3 November meeting with the Review Group.

**3.25** The original Ingestre Orangery Apple Store Heritage Project (30) was been revised and now focusses entirely on the restoration of the historic gardens and development of the outside space to increase connectivity with the landscape and enhance a tranquil and accessible space. This is still considered to fully meet the remit for original shortlisting. It includes the original small project (51) covering the Long Walk restoration.

**3.26** A separate Stage 2 application has not been put forward as part of the Heathland Restoration Project Land Exchange suggested by the AONB (12). A feasibility study has been completed and the AONB are considering taking it forward through an alternative route. It has therefore been removed from the shortlist at the request of the AONB.

## Small projects list

**3.27** Of the original small projects list:



- The Ingestre Long Walk Restoration (51) has been included as part of the main project covering the Orangery Garden (d).
- The Tixall Icehouse Project (26/28) has been taken on by new project sponsors and has become a larger project (g). This was originally a community-led project, arising from the parish consultation, and retains substantial community enthusiasm.
- Other small projects have not come forward although some interest continues to be expressed in the Nesting Birds Project (47) and progress was made on the Community Woodland Planting at Hixon (45), although ultimately this proved not feasible due to landowner permissions.

**3.28** Given the changes to the original small projects list, opportunities for an on-going running of a small projects grant fund were explored. It was considered that this would be difficult to manage as the Review Group does not have a long-term management role, and staff capacity is limited. This type of scheme is often expensive and time intensive, and it can be difficult to achieve the right projects on the ground. The AONB was approached to consider managing such a scheme and has declined for these reasons.

**3.29** In summary, the small projects which aimed to cover community-led small schemes is in part successful with two of the original small projects now being considered as main projects. The other main projects, particularly those covering access and biodiversity connections/enhancement, do meet community aspirations voiced at the workshops although none are specifically community-led projects. In the absence of an ongoing fund for the small projects, it has been recommended to the main project leads that they consider small project links, for example, whether the Trent Sow Washlands project (b) could work with the Midlands Bird Group to deliver the wetland birds element of the nesting birds project (47).

### Delivery of community aspirations

**3.30** The seven projects deliver on many of the key suggestions and needs identified at the public workshops, and represent many of the aspirations and project ideas on the original longlist. Most notably:

- Improvements to access. The Connecting Towpaths project (c) will provide a safe off-road route between the villages and Stafford, with this forming a significant proportion of a larger towpath project. The improved surfacing as a result of the towpath renovations will also enhance accessibility for wheelchair users and pushchairs.

## Chapter 3

### Process for identifying projects

Trent-Sow Parklands and Cannock Chase AONB HS2 Group - Environment Enhancement Plan  
March 2021

- Habitats for wildlife. The Trent Sow Washlands project (b), and the Shugborough Woodpasturescape (e) will benefit a range of species, including birds, bats, aquatic flora and fauna, and pollinators.
- Recording and promoting local heritage. Revealing Tixall's Halls (g), Ingestre Orangery Garden (d), Changing Landscapes (f), and Shugborough Estate Gardens (a), will all in some way improve understanding, preserve heritage features, and/or promote the rich local heritage of the project area.

**3.31** Prominent suggestions from the workshops that have not been taken forward include:

- the popular Ingestre Access project for which a feasibility study is proposed to ensure the development work so far for this project is not lost;
- Improved access to Cannock Chase across the A513. In discussion, it was considered if this could be feasible within land under National Trust ownership. However, concerns were raised over allowing visitors access to some of the most sensitive areas of the AONB – consultation with the SAC partnership would be required as to how this could be managed. The project would require a significant proportion of the £1.5m budget to install either a road bridge or underpass to provide safe access which brought into question the projects' value for money. Ultimately, the National Trust felt unable to take on such a large project at this time.

### Final presentation of projects

**3.32** The projects were presented to the Review Group and HS2 on 3 November 2020. Where possible, projects were presented by their proposers; in their absence, the Review Group Project Manager presented two projects; Shugborough Estate Gardens (a), and Revealing Tixall's Halls (g).

**3.33** The suite of projects falls within the overall £1.5m budget. There are therefore no reserves or second choices should any of the seven projects not go forward for any reason. As part of the evaluation consideration has been given to 'scaleability' of projects and possibility for increasing/reducing the proportion of the overall budget, with opportunities for additional phases of projects if more funding becomes available. The Review Group and HS2 unanimously supported all seven projects, with provisos in place to ensure any outstanding issues or queries will be dealt with adequately. Further discussion on how the budget will be spent is detailed in **Chapter 5**.



## Chapter 4

### The Environmental Enhancement Projects

This chapter presents the seven endorsed projects, providing detail on their aims and objectives, how they will be delivered, timescales, costs, and outcomes.



## Chapter 4

### The Environmental Enhancement Projects

Trent-Sow Parklands and Cannock Chase AONB HS2 Group - Environment Enhancement Plan  
March 2021

## Project A – Shugborough Estate Gardens, Chinese House and Cats Monument

### Lead Delivery Partner

The National Trust (NT)

### Supporting partners

Staffordshire Borough Council (SBC) Tree Officer and SBC Conservation Officer

### Project Aims and Outcomes

- Improving the Quality of the Garden: The quality, presentation and floristic diversity of the garden areas within the project area.
- Improving Landscape Quality: Views of the Grade I Listed Landscape in this part of the project area will be improved by reducing the impact of visually intrusive external features and emphasising positive views.
- Improving the Historic Environment: The setting of Shugborough's Grade I Listed Landscape, the Cats Monument and the Chinese House will improve and regain its historic setting in the landscape. The historic shelter belt and shrubbery walk will be re-established. The outstanding recommendations from the CMP in these areas will be completed.
- Improving access, enjoyment and use: Widening the audience appeal through the project will see a visible change in peoples' enjoyment and access to the gardens.

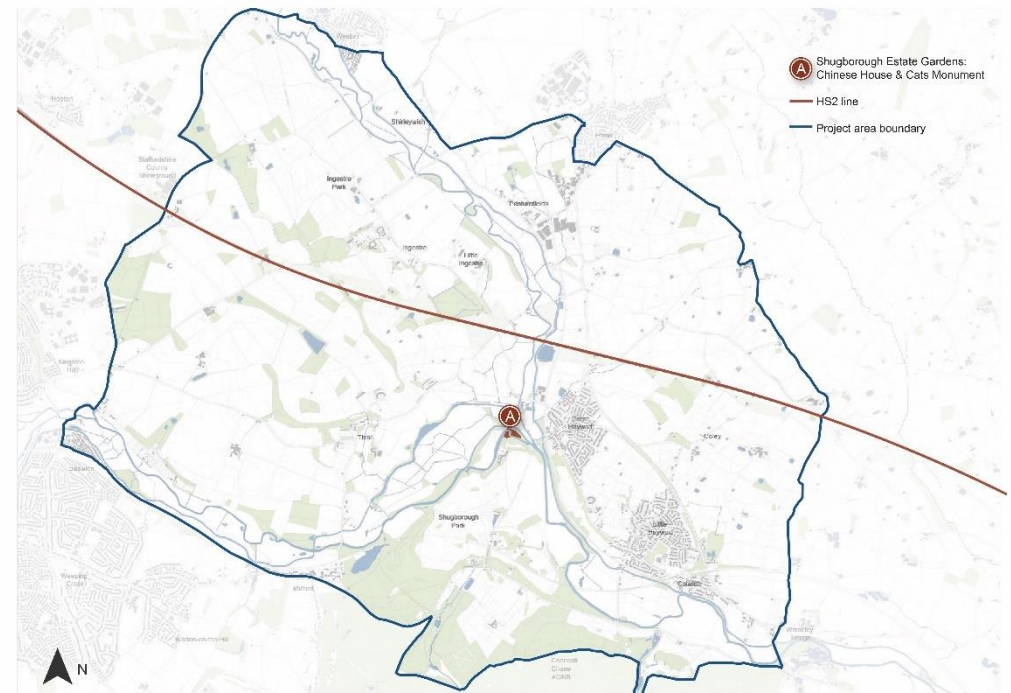


Chinese House ©NationalTrust



Cats Monument ©NationalTrust

Figure 4.1: Location of Project A – Shugborough Estate Gardens, Chinese House & Cats Monument



### Method and approach

**4.2** A significant amount of work took place in December 2019 to reduce encroaching vegetation and to begin to improve the presentation in the project area. However, the garden areas around the monuments need additional investment to help resolve the large volume of encroaching vegetation. This work will complete several of the outstanding management issues and vulnerabilities as identified in the CMP.

**4.3** The project will be guided by best practice in landscape restoration, Shugborough's CMP, specialist advice from consultants and Shugborough's 'spirit of place'.

## Chapter 4

### The Environmental Enhancement Projects

Trent-Sow Parklands and Cannock Chase AONB HS2 Group - Environment Enhancement Plan  
March 2021

**4.4** Preparatory work consents, quotes and contact with appropriate suppliers/contractors has already been completed. Contractors will deliver specialist work, for instance tree surgery and path works.

**4.5** The existing Shugborough team (staff and volunteers) will manage and support the delivery of the project. This involves all ground preparation, liaising and managing contractors, co-ordinating visitor involvement and engagement, working on delivering the project and caring for the longevity of the maintenance of the project areas.

**4.6** The NT will engage with their supporters throughout the project by using interpretation, offering on site tours and hands on sessions where supporters can join in.

**4.7** Plant procurement and plant biosecurity will be significant factors in delivering the project, with all potted plants peat-free and held for a minimum of six weeks in quarantine to ensure NT best practices are adhered to.

**4.8** Materials will be sourced that protect and nurture the growth of plants being established and trees will be protected from further ground compaction by the creation of a raised hoggan path surface.

**4.9** Although this project lies within the Shugborough property and therefore public access is limited to paying visitors, the area will be free to access as part of the offer on Heritage Open Days.

**4.10** As a result of a query by Cannock Chase AONB, it was decided that the 18<sup>th</sup> century historic shelter belt and shrubbery walk that runs alongside the River Sow should be extended to the west to enhance mitigation for HS2 from within the park and to focus views.

### When – timescales for delivery

Table 4.1: Timescale for project delivery

	2021											2022			
	M	A	M	J	J	A	S	O	N	D	J	F	M	A	
Path construction															
Purchase planting materials															
Interpretation															
Source materials & equipment															

Purchasing plants and materials														
Clearing vegetation														
Planting														
Tree surgery														

- Managing and caring for the project area will continue throughout the growing season in 2021, 2022 and onwards. It will be managed by the NT garden team.

### Costs

#### Funding requested:

- Capital costs: £17,930

**TOTAL funding requested = £17,930**

- Match funding: £27,473 (secured)

### Legacy – how benefits will be maintained / monitored

#### Who will be involved?

**4.11** Landscaping and garden maintenance will be managed by the Shugborough garden team (NT staff and volunteers), with contractors used to increase skills when needed.

**4.12** Advice sought from:

- Collections & House team on the condition of the monuments
- Visitor Engagement team on interpretation and engagement
- General Manager on business impact of the project
- NT Consultants on the historical setting of the monuments in the landscape



## Chapter 4

### The Environmental Enhancement Projects

Trent-Sow Parklands and Cannock Chase AONB HS2 Group - Environment Enhancement Plan  
March 2021

#### Timescales for intervention

**4.13** A cyclical annual maintenance regime will be implemented by the Shugborough Garden team (staff and volunteers). This will involve:

- Main growing season (March to September) – managing the presentation of the project areas through watering, mowing, pruning and planting
- Winter (October to February) – completing annual maintenance involving pruning, planting and managing the presentation of the area

#### Costs and revenue funding legacy

- Scheduled in as part of the property business plan
- Integrated into the NT's annual budget round
- NT garden team (staff and volunteers) used to help maintain the project area and match fund the project

#### HS2 Green Corridor Benefits



Ecology & biodiversity



Arts & culture



Access & recreation



Landscape character



Historic environment



Climate change



Regeneration



Food & Farming



Water improvements



Health & wellbeing



Socioeconomic etc.



Stronger communities

#### Key statistics

- Staff involved in delivery (no.) – 10
- Volunteers involved (no.) – 80 x Garden
- Estimated people benefitting/ engaged per year (no) – 245,000 visitors to Shugborough in 2019
- Amount of habitat created (ha) – minimal
- Trees planted (no) – 58 trees
- Length of access improvements (m) – 64 metres of new path
- Historic features (buildings/structures) restored (no) – the landscape around the Cats Monument and Chinese House restored to meet recommendations from key documents
- Area of historic landscape / features restored (m2) – Chinese House 1,915m<sup>2</sup> Cats Monument 3,820m<sup>2</sup>

#### The project was approved subject to the following provisos:

- An extra £3,000 requested for extending the works on the shrub walk.

## Project B – Trent and Sow Washlands

### Lead Delivery Partner

Staffordshire Wildlife Trust (SWT)

### Supporting partners

Trent Rivers Trust, Environment Agency, National Trust, Canal & Rivers Trust, Stafford Borough Council, Natural England, Staffordshire County Council and the Cannock Chase AONB Partnership

### Project Aims and Outcomes

- Restore 50 ha of the UK priority habitat, Coastal and Floodplain Grazing Marsh (MG4 – *Alopecurus pratensis*).
- *Sanguisorba officinalis* grassland and MG8 – *Cynosurus cristatus*-*Caltha palustris* grassland).
- Restore and enhance 2 km of watercourses including reprofiling sections of the River Trent.
- Create 5 ha of wetland habitats including wildlife ditches, clean water ponds, scrapes and planting native black poplars.
- Restore and enhance 7 ha of Inland Saltmarsh including commissioning a hydrological survey.

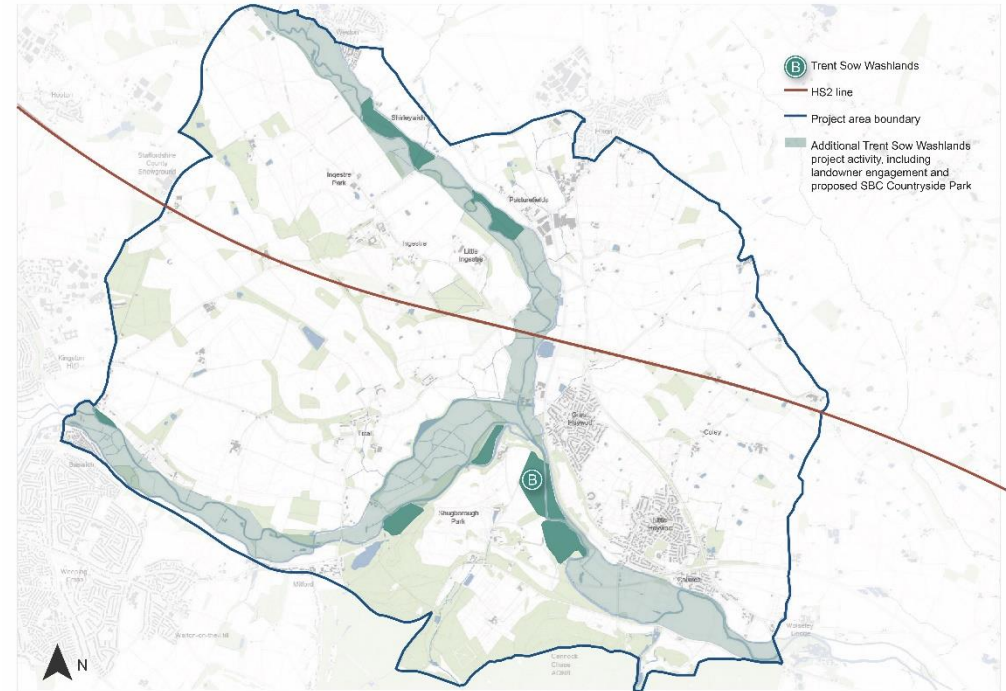


River Sow



River Trent

Figure 4.2: Location of Project B – Trent and Sow Washlands



### Method and approach

**4.14** The Trent and Sow Washlands project will use a range of restoration techniques aiming to achieve the objectives of the Making Space for Nature report (Lawton, 2010), by ensuring the project will deliver more, bigger, better connected sites to establish a strong and connected natural environment network of grassland and wetland habitats along the river corridor, delivering on local authority, private and National Trust land.

**4.15** There are a number of sites with landowner support where works have already been identified (first stage sites) and there are further leads where we have had previous engagement with landowners that are likely to engage in the project (second stage sites). Many



## Chapter 4

### The Environmental Enhancement Projects

Trent-Sow Parklands and Cannock Chase AONB HS2 Group - Environment Enhancement Plan  
March 2021

landowners in the area are in agri-environment schemes who also represent good potential contacts. A project officer will be employed to manage the project, beginning with the delivery of habitat works on the consented sites (first stage sites), and liaising with additional landowners to secure permission to work on the second stage sites, which will form the basis of further delivery (see timetable below for more information). Within the project officer's role, time will be allocated for obtaining any unsecured funds for match funding.

#### Restoration Methods:

**4.16** Grassland Enhancements: The 50 ha of grassland restoration and enhancement work would be carried out using a variety of methods to improve and create species-rich grasslands:

- Green hay strewing – the most efficient method of restoring or creating a species-rich grassland is by green hay strewing. Green hay strewing is the practice of cutting and baling hay from a species-rich donor grassland before immediately transporting and spreading it onto the receiver site for restoration. Often this is the most effective method to use to create new meadows as it can be completed fairly quickly and doesn't require processing like other methods but it does need to be completed in a very narrow timeframe.
- Brush seed harvesting – this method gives a much longer timeframe in which to collect seed from a species-rich meadow and can be used as a form of supplementary seeding to ensure that seed from species that flower and seed later in the year are also collected. A brush seed harvester is pulled behind a quad bike where the harvester has a spinning brush which collects seed into a hopper but leaves the plants intact so that the land can still be grazed or cut for a hay crop after the collection. Extra staff and volunteers would help to process the collected material before it is dried and then spread by hand onto the receiver site.
- Supplementary seeding and planting – sometimes grasslands benefit from a few key flowers typical of high quality grasslands in the area but that are not present in the existing sward. Local seed can either be hand-picked from local sources and spread or grown into plug plants to be planted. Both methods can be carried out by extra staff and volunteers, with the added benefit of providing wildflower identification training whilst hand collecting local seed.

**4.17** River and Wetland Enhancements: We will be working with partners such as the National Trust, Trent Rivers Trust, Environment Agency and Stafford Borough Council on restoring and enhancing 2 km of watercourse within the project boundary. This will be carried out by reprofiling sections of the River Sow and Trent riverbanks to create additional resting areas for juvenile fish and invertebrates whilst maintaining habitat for mammals such as otter. This will ultimately reconnect the river channel to its floodplain. It will also improve the riparian corridor and other habitats adjoining the floodplain. Staffordshire Wildlife Trust are anticipating that gravels will be present along the raised riverbanks comprising of previously dredged materials. This being the case, these gravels will be screened out and put back into the river at appropriate locations for additional freshwater habitat and to aid natural river processes.

**4.18** The 5 ha of wetland creation will comprise of a range of works such as the creation of wildlife ditches, clean water ponds, scrapes, planting native black poplars, pulling back fencing from hard-edged plantations in order to create a more natural buffer zone, and installing buffer fencing to create riparian zones.

**4.19** Feasibility studies are required for all wetland works, for example, to examine soils for clay and gravel. Although consents will be required, the work proposed is very similar to projects SWT have completed previously and therefore it is anticipated these are unlikely to pose obstructions.

**4.20** Inland Saltmarsh Enhancements: Firstly, a hydrological survey is required to address the key issues on site and identify capital works to solve these issues. In particular, a central drain on the site needs investigation as to whether it is a positive structure helping to take nutrient rich/polluted water away from the saltmarsh, or a negative structure that is draining the saltmarsh. All necessary consents will be obtained.

**4.21** Proposed capital works will include water control structures to be installed across the site, fencing and gates, wader scrapes situated away from the saltmarsh, and a new interpretation board for the site.

**4.22** Following a query from Historic England over how the earthworks of the ancient flood meadows would be assessed and avoided, it was agreed that the LiDAR of the area would be updated to better inform the project and to increase knowledge of these features.

## Chapter 4

### The Environmental Enhancement Projects

Trent-Sow Parklands and Cannock Chase AONB HS2 Group - Environment Enhancement Plan  
March 2021

## When – timescales for delivery

Table 4.2: Timescales of delivery for various project elements

Proposed work component	2021					2022										2023										2024													
	J	A	S	O	N	D	J	F	M	A	M	J	J	A	S	O	N	D	J	F	M	A	M	J	J	A	S	O	N	D	J	F	M	A	M	J	J		
Grassland Enhancements																																							
1. Planning																																							
2. Consent																																							
3.Procurement																																							
4. Delivery																																							
River Restoration																																							
1. Feasibility & Design																																							
2. Consent																																							
3. Procurement																																							
4. Delivery																																							
Wetland Creation																																							
1. Feasibility & Design																																							
2. Consent																																							
3. Procurement																																							
4. Delivery																																							
Tree Planting																																							
1. Works planning																																							
2. Consent																																							
3. Procurement																																							
4. Delivery																																							

## Costs

### Funding requested:

- Capital costs: 306,500
- Revenue and monitoring costs: £145,500

**TOTAL funding requested = £452,000**

- Match funding and in-kind contribution: £102,250

## Legacy – how benefits will be maintained / monitored

**4.23** Forthcoming agri-environment schemes such as the E.L.M. (Environmental Land Management) scheme, will ensure long-term sustainable management of sites in the project area. SWT will work with landowners to help secure a scheme and will also continue to work with the landowners engaged in the project to provide advice and ensure long-term appropriate site management.

### Key Statistics

- Staff involved in delivery: 7
- Volunteers involved: 25
- Estimated people benefitting/ engaged per year: difficult to quantify at this stage, however there is public access through Shugborough and Pasturefields therefore thousands of people will benefit/be engaged with every year
- Amount of habitat created: 62 ha
- Trees planted: 1000
- Length of access improvements: none
- Historic features (buildings/structures) restored: none
- Area of historic landscape / features restored: 500,000 m2

## Chapter 4

### The Environmental Enhancement Projects

Trent-Sow Parklands and Cannock Chase AONB HS2 Group - Environment Enhancement Plan  
March 2021

#### HS2 Green Corridor Benefits



Ecology & biodiversity



Arts & culture



Access & recreation



Landscape character



Historic environment



Climate change



Regeneration



Food & Farming



Water improvements



Health & wellbeing



Socioeconomic etc.



Stronger communities

#### The project was approved subject to the following provisos:

- Working with HE and SCC, SWT will commission additional research into Historic Water Meadows. This will enhance existing understanding with LIDAR imagery and will help identify inform the delivery of the project. An additional £6,000 has been awarded to commission this work.
- SWT will provide a robust monitoring scheme to be prepared to monitor the impact of the project on wildlife.



## Project C – Connecting Towpaths

### Lead Delivery Partner

Canal and River Trust (CRT)

### Supporting partners

Ingestre with Tixall Parish Council, Colwich Parish Council, National Trust and local businesses

### Project Aims and Outcomes

The proposed scope of work is to:

- construct a standard towpath construction design – 100mm DOT type 1 base and 6mm to dust, self-binding wearing course,
- create a towpath with a minimum 1.5m width where possible,
- install orientation signage at key access points.

Direct Outcomes which will be measured through the project, including:

- Increase in walking or cycling on the canal towpath,
- More people will be encouraged to use the towpath for active recreation through the year,
- People will have a greater awareness of the canal and its connections to places,
- The towpath will be in a better condition for people of all physical abilities.

Indirect Outcomes which will not be measured through the project:

- Increase in number of visits to adjoining or nearby attractions such as Shugborough,
- More people arriving to destinations by means of sustainable transport resulting in less car journeys and a reduction in carbon emissions,
- Increased physical activity on the towpath leading to improved wellbeing and satisfaction,
- Enhanced landscaped and built heritage setting with a restored canal corridor,
- Mitigation of negative impacts of HS2 construction and operation on the area.

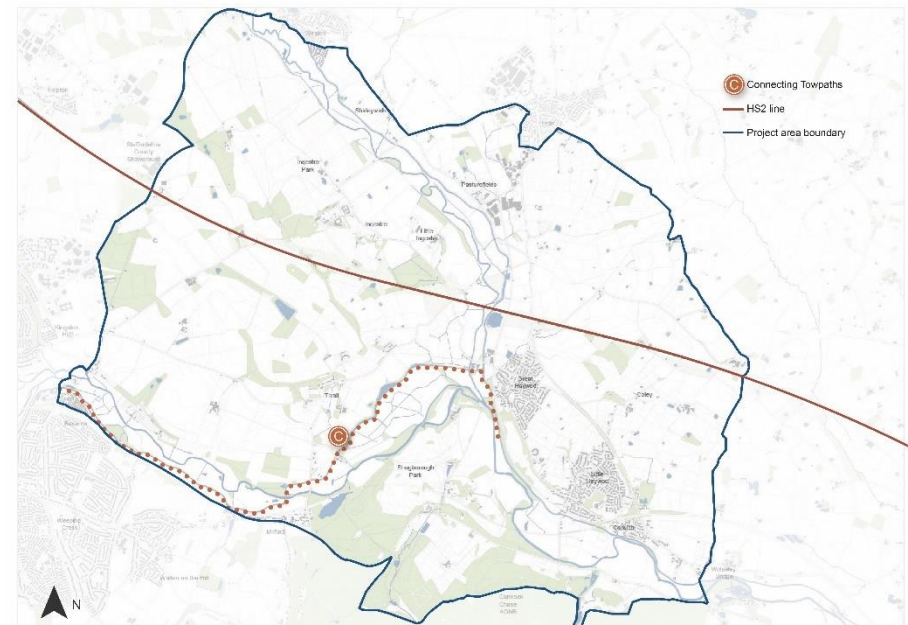


Great Haywood Junction



Tixall Wide ©Anne Andrews

Figure 4.3: Location of Project C – Connecting Towpaths



## Chapter 4

### The Environmental Enhancement Projects

Trent-Sow Parklands and Cannock Chase AONB HS2 Group - Environment Enhancement Plan  
March 2021

## Method and approach

### Project Delivery

**4.24** The project will be managed by CRT who have the necessary staff resources in place to deliver the scheme. The Trust has experience of delivering waterway focused projects and schemes across the country. Specialist advice will be obtained from the Trust's expert teams as required. It will be delivered using our internal Project Management Approved Standard and toolkit. This is based on the industry standard Association of Project Management Body of Knowledge 6<sup>th</sup> Edition but has been tailored to provide a practical approach for the type of projects that are conducted within CRT. The Toolkit helps us to drive up project performance and deliver successful value for money projects.

**4.25** The funding request for this project is high, however, the access issues caused by the linear access along the towpath mean that the cost per linear metre is considerably more than a normal path surfacing project. CRT will adopt a competitive tender process to ensure that the project delivers value for money.

**4.26** Whilst the benefits of this project are rather singular, the impact would be significant for access improvements and recreation in the area. It was agreed at the November 3 meeting that a Habitat and Landscape Management Plan would be written up to ensure opportunities for habitat improvements were made, and at the very least, no net-loss in habitat or biodiversity would be caused by the project.

### Project Monitoring & Evaluation

**4.27** The Trust will monitor the project performance in terms of its finances, health and safety, and programme. This will be undertaken by the Project Manager and a monthly report produced.

**4.28** Data will be collected by the following methods:

- Monthly finance reports
- Progress against project programme

### PR generated

**4.29** The Trust has an established Post Project Appraisal (PPA) system which will be used to evaluate the project on completion. This work will be undertaken in-house and will include an evaluation of project learning and performance indicators.

### When – timescales for delivery

It is the Trust's intention to deliver the outlined works in the financial year 2021-2022, a detailed programme will be produced should funding be secured.

### Costs

#### Funding requested:

- Capital costs: £595,000

**TOTAL funding requested = £ 595,000**

- Match funding and in-kind: £128,000

### Legacy – how benefits will be maintained / monitored

**4.30** CRT undertake regular inspections of the canal network with an emphasis on safety. All inspections are carried out in accordance with the Trust's Asset Inspection Procedure 2019 Mandatory Standards.

**4.31** Dedicated Asset Inspectors undertake either monthly (in areas deemed to be of high risk) or bi-monthly length inspections where defects are electronically recorded in a handheld device, automatically updating SAP to raise a notification against the defect. The raised SAP notifications inform the general work programme of the Region's Operational teams or the planned works led by the Engineering Asset team.

**4.32** In addition to monthly or bi-monthly inspections, the Asset Inspectors also carry out annual Towpath Condition Surveys and Bank Inspections. Further ad-hoc surveys such as vegetation inspections are instructed as required, these are uploaded into GIS and inform future asset management. The Trust carries out regular vegetation management of the towpath and canal corridor.

## Chapter 4

### The Environmental Enhancement Projects

Trent-Sow Parklands and Cannock Chase AONB HS2 Group - Environment Enhancement Plan  
March 2021

#### Key Statistics

- Staff involved in delivery (no.): 8 FTE (plus construction teams)
- Volunteers involved (no.): The project will not directly involve volunteers
- Estimated people benefitting/ engaged per year (no): 5,000 – combined populations of Colwich and Ingestre with Tixall plus visitors to the area
- Amount of habitat created (ha): Indirect – improved canal corridor
- Trees planted (no): 0
- Length of access improvements (m): 3.75km
- Historic features (buildings/structures) restored (no): 1 – canal towpath
- Area of historic landscape / features restored (m<sup>2</sup>): The canal will contribute to the restored landscape as partially designated within the Historic Parkland

#### The project was approved subject to the following provisos:

- A User Conflict Management Plan will be drawn up to inform project design.
- There will be a robust competitive tender process to ensure value for money. If there are any cost savings, these will be used in relation to biodiversity and landscape enhancements, and improving the condition or setting of heritage assets along the route.
- A Habitat and Landscape Management Plan will accompany the planned tow path improvements which should: (a) seek to minimise negative landscape and habitat impacts of the improvements to the tow path; (b) identify habitat and landscape enhancements along the route, as minimum committing to no-net-loss of biodiversity resulting from the project, but ideally delivering biodiversity gains.

#### HS2 Green Corridor Benefits



Ecology & biodiversity



Arts & culture



Access & recreation



Landscape character



Historic environment



Climate change



Regeneration



Food & Farming



Water improvements



Health & wellbeing



Socioeconomic etc.



Stronger communities



## Chapter 4

### The Environmental Enhancement Projects

Trent-Sow Parklands and Cannock Chase AONB HS2 Group - Environment Enhancement Plan  
March 2021

## Project D – Ingestre Orangery Garden

### Lead Delivery Partner

Friends of Ingestre Orangery (FOIO)

### Supporting partners

Ingestre Hall, Staffordshire Gardens & Parks Trust (SGPT), local residents

### Project Aims and Outcomes

- Restoration of key historic features of the garden including the Long Walk and yew arches with a programme of maintenance in place.
- Enhancement of connectivity with the historic garden and landscape through:
  - Creation of a seating and viewing area,
  - Tree planting and an associated programme of engagement,
  - Art installation commissioned and installed to create a statement piece that conveys both the cultural and natural heritage of the site and will form part of a wider programme of artist-led activities,
  - Outdoor learning space created and used by visitors to the garden and as a base for the programme of outdoor learning,
  - Outdoor learning programme designed and delivered,
  - Interpretation installed.
- Increased access, enjoyment and use of the gardens as a result of the project leading to:
  - 50% increase in footfall to the gardens in two years following completion of the capital works,
  - 30% increase in dwell time per visit in two years following completion of the capital works,
  - SEN (special educational needs) tour and activities developed and trials with two groups completed during year one of the project.

- Community engagement and skills development through:
  - People being engaged in the project and contributing time.
  - 13 volunteers trained in either horticulture maintenance or outdoor learning.
  - 3 placements – students, work experience or Duke of Edinburgh.
- Long term viability of the site enhanced through:
  - Creation of a management and maintenance plan.
  - Development of income generation streams to contribute to maintenance costs
  - Raising the profile of the site as a local cultural asset and visitor attraction.



Irish Yew Arch, Ingestre Long Walk



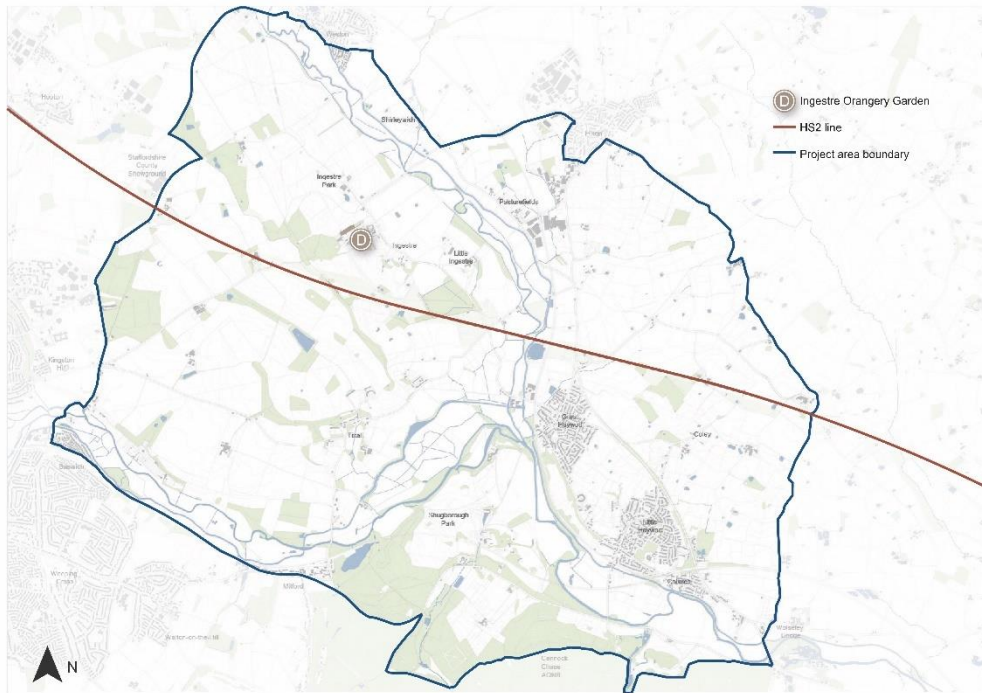
Proposed site of art installation

## Chapter 4

### The Environmental Enhancement Projects

Trent-Sow Parklands and Cannock Chase AONB HS2 Group - Environment Enhancement Plan  
March 2021

Figure 4.4: Location of Project D – Ingestre Orangery Garden



### Method and approach

**4.33** FOIO will work with volunteers and contractors to achieve the following outcomes:

- Resurfacing of the Long Walk and restoration of the Irish Yew arches to enhance the promenade through the gardens as in original application.
- Create a stable surface at the back of the 'pod' meeting room on which to put a seating area with views overlooking the Capability Brown landscape from point behind the ha-ha.
- Level and surface the mound at the entrance to the site (driveway) to create an area suitable for an art installation which could be a living sculpture. Commission an artist

to design and install an outdoor sculpture or other to represent the story of the Orangery and its relationship with its natural environment. This statement piece will be both a symbol of pride in the restoration but also an invitation to visitors to find out more about the heritage of the site and surrounding area. Local communities will be consulted through the commissioning process. Early discussion with SBC Conservation Officer has suggested the temporary art installation will not require planning permission.

- Create a planting area to include Ingestre fruit trees outside the apple store site and include interpretation signage to enhance the visitor experience in the grounds. The area will be used by young people and families as part of our outdoor activity programme.
- Fell unsafe trees at the top of the Woodland Walk and level the space on which to establish a temporary outdoor learning space/classroom which will accommodate school and home school groups, families and adult wellbeing activities. The project will also provide staffing to design and deliver activities linked to outdoor learning, seasonal changes, planting and maintenance of the gardens, wellbeing, and creating habitats. Training will be provided for staff and volunteers.

**4.34** At each stage of this project, the FOIO trustees have overall responsibility for the delivery of the project and the future operation and maintenance of the gardens beyond the end of the project. During the delivery phase, this will include:

- Project management and oversight
- Financial admin and management
- Approving briefs and designs
- Commissioning contractors
- Operational planning and development beyond the end of the project

**4.35** Trustees will continue to meet monthly during the capital works stage and the activity stages of the project. During the capital works and development stages the existing Orangery Development Manager will have delegated responsibility to undertake a project management role and to make decisions up to agreed thresholds. This post will be funded by the project at a rate of one day per week from June 2021 for a maximum of one year (52 days to be worked according to project need and timeline). The project manager will also have responsibility for community engagement activities beyond the brief of the outdoor learning programme (e.g.

## Chapter 4

### The Environmental Enhancement Projects

Trent-Sow Parklands and Cannock Chase AONB HS2 Group - Environment Enhancement Plan  
March 2021

community consultation on the art installation), supervision of work placements and students (e.g. horticulture) promotion of the project and embedding evaluation procedures.

**4.36** An outdoor learning instructor/s will be commissioned to create a programme of activities which will be delivered one day per week through term time and additional days in school holidays. It is anticipated that this will be 5 days at the beginning of the project to design the programme and a further 144 delivery days over three years to be project funded and worked according to project need. The instructor will also provide cascade training for volunteers and oversee young volunteers such as Duke of Edinburgh placements. Group bookings such as beavers/brownies and home school groups will pay a fee to cover the tutor costs and this will not form part of the allocated time.

**4.37** The gardens will be accessible to the public 7 days a week, with interpretation at the viewing point / seating are at the rear of the 'pod' and through a programme of walks which incorporate Ingestre Hall grounds and cross to the Pavilion.

**4.38** Contracting, invoicing and budget management will be carried out by the existing FOIO infrastructure. FOIO will seek to work with local suppliers where possible to create benefits for the local economy and partnerships for future maintenance.

**4.39** Capital works will be carried out by contractors appointed by FOIO and overseen by the project manager reporting to the Site Management and Maintenance sub-group (trustees) and the board. The project has been designed to deliver several discrete areas of work delivered consecutively rather than concurrently so that risk and resources can be carefully managed throughout.

**4.40** Some gardening and maintenance tasks will be carried out by volunteers and a key outcome of the project will be to recruit more volunteers to support this beyond the capital works stage. Volunteers will also be recruited to support the activity programme.

### Costs

#### Funding requested:

- Capital costs: £49,060
- Staffing and contingency: £22,700

**TOTAL funding requested = £71,760**

■ Match funding and in-kind contribution: £21,190

**Table 4.3: Timescale for project delivery**

	2021							2022												23	24
	J	J	A	S	O	N	D	J	F	M	A	M	J	J	A	S	O	N	D		
Project inception																					
Install outdoor learning space & volunteer recruitment																					
Summer activity programme & create brief for art installation																					
Restore yew arches, deliver training & engagement																					
Appoint artist & resurface Long Walk																					
Reinstate gardens, prepare interpretation for Long Walk																					
Consult with schools, design activities for 2022																					
Prepare ground, plant trees & community engagement																					
Install art commission																					
Celebration event																					
Planting in gardens, volunteer review & end of PM contract																					
Delivery of activities																					
End of project evaluation																					



## Chapter 4

### The Environmental Enhancement Projects

Trent-Sow Parklands and Cannock Chase AONB HS2 Group - Environment Enhancement Plan  
March 2021

#### Legacy – how benefits will be maintained/monitored

**4.41** The project will involve the creation of a management and maintenance plan for the enhancement areas and the broader garden which will be absorbed into the annual planning of work by the volunteer team and directed by the trustee with lead responsibility. The SGPT will act as a consultant for this plan and will have regular contact throughout the project.

**4.42** Gardening and maintenance will continue to be carried out by garden volunteers beyond the end of the project and contractors used when needed e.g. return maintenance visit for the yew arches and maintenance of the art installation. This work is overseen by the Site Management and Maintenance sub-group who report to the board of trustees.

#### Timescales for intervention

**4.43** The maintenance of the gardens will continue year-round. Monthly inspections will highlight more urgent work.

#### Costs and revenue funding

**4.44** Site maintenance will be scheduled as part of the Orangery business plan and integrated into financial planning. Income generating activities developed through the project will support ongoing maintenance.

#### Key Statistics

- Staff – one part time project manager from June 2021 to April 2022, one part time outdoor learning and activities officer from July 2021 to October 2024
- Volunteers – 5 volunteer gardeners to support planting and garden maintenance, 8 activities volunteers, 3 student placements or Duke of Edinburgh/work experience
- Estimated people benefitting/ engaged per year – 13 volunteers, 2400 visitors to the gardens (free entry) based on current footfall with the anticipation that this will increase due to the enhancements, 760 participants in outdoor family activities, 4 groups per month during term time from Ingestre Hall, 6 group visits per year e.g. brownies/beavers and home school groups.
- Amount of habitat created (ha) – Long grass habitat to be created around the tree planting.

- Trees planted – 15 fruit trees
- Length of access improvements (63m) – driveway
- Historic features (buildings/structures) restored – apple store interpreted within the historic garden
- Area of historic landscape / features restored (100m length) – Long Walk restored, seating area provided to overlook the historic landscape, Irish yew arches restored and maintained.

#### HS2 Green Corridor Benefits



Ecology & biodiversity



Arts & culture



Access & recreation



Landscape character



Historic environment



Climate change



Regeneration



Food & Farming



Water improvements



Health & wellbeing



Socioeconomic etc.



Stronger communities

#### The project was approved subject to the following provisos:

- £3,000 additional funding to produce the Garden Management and Maintenance Plan

## Project E – Shugborough Woodpasturescape

### Lead Delivery Partner

National Trust (NT)

### Supporting partners

Natural England, Forestry Authority, Staffordshire County Council, AONB, Historic England, Stafford Borough Council conservation officers and SAC partnership

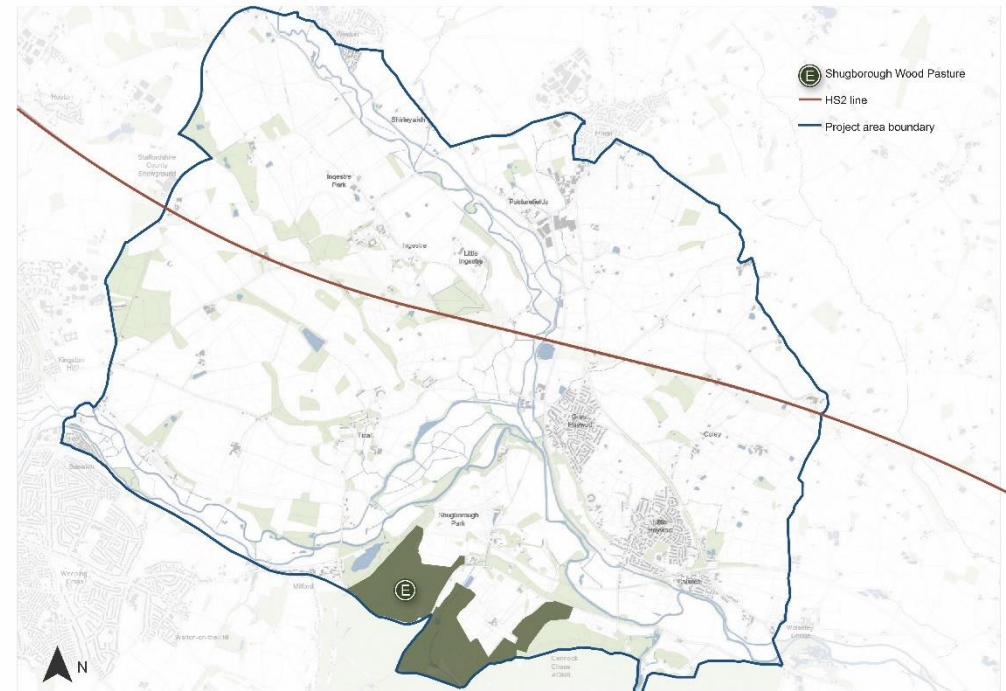
### Project Aims and Outcomes

- Creating New Habitat: Create 40 ha of new/restored priority habitat
- Connecting Habitats: Creating a block of 220 ha of contiguous priority habitat that links Shugborough to Brocton Coppice (in Cannock Chase SAC)
- Improving Landscape Quality: Improving Landscape Quality throughout the project area by:
  - Replacing incongruous straight plantation edges with sinuous edged habitat mosaic
  - Restoring the visual connection with the natural hill and valley landforms;
  - Conserving cultural and landscape heritage of veteran trees.
- Improving the Historic Environment and Setting of Shugborough's Grade I listed Parkland.



Existing wood pasture within Shugborough's parkland ©NationalTrust

Figure 4.5: Location of Project E – Shugborough Wood Pasturescape



### Method and approach

Phase 1: Development Phase: September 2020-June 2021 – Funded by Natural England.

**4.45** A Natural England funded Development Plan will identify detailed methodology for delivering a 110 ha area of new or enhanced priority habitat (wood pasture, acid grassland, heathland and native broadleaf woodland) connecting Cannock Chase's wood pasture to Shugborough's parkland. The plan will identify management strategies for key constraints (protected species, historic environment, landscape) and will produce:

- Detailed implementation plans including tree felling and planting plans, fencing and grazing infrastructure.
- A Veteran Tree Management Plan for the whole project area.

**4.46** The intention is to take a phased approach to the implementation of this plan, minimising temporary visual impacts of removing large areas of conifer plantation by allowing time for replacement native vegetation to establish, and staggering management of veteran trees to avoid shocking them.

#### Phase 2: Delivery of Priority Works: July 2021-September 2024 – Funded by Trent-Sow HS2 Group

**4.47** A Project Officer will be appointed, and their post will run from July 2021-June 2023 inclusive at 0.6 FTE to procure and supervise the delivery of the key capital items as follows:

- Introduction of grazing infrastructure: fencing, water supply, gates and corrals to facilitate grazing wood pasture. Introduction of grazing to priority areas.
- Tree removal from high priority areas: removing dense conifer plantation and secondary woodland on SSSI heath. Where possible timber will be sold as a standing crop to reduce costs.
- Tree planting: Native broadleaf trees suitable for the creation of wood pasture planted in fenced enclosures.
- Implement stage 1 of the Veteran Tree Management plan carrying out high priority arboricultural works and the first stage of halo thinning.
- Annual clearing of bramble and bracken in newly cleared areas will be carried out by an Assistant Ranger (1 FTE on this project) using a hired cut and collect tractor & attachment, and by the Ranger volunteer team.

**4.48** Running alongside this will be a Communications and Engagement Strategy to engage the public in conservation work. This will include the creation of photographic visualisations of desired end state of works, on-site interpretation, ranger-led walks and wild play opportunities.

**4.49** Future Funding: The project manager will also support the property in seeking a new Environmental Land Management (E.L.M.) scheme to fund phase 3 of the project's delivery.

## Chapter 4

### The Environmental Enhancement Projects

Trent-Sow Parklands and Cannock Chase AONB HS2 Group - Environment Enhancement Plan  
March 2021

#### Phase 3: Ongoing Management and Second Phase of Habitat Works 2025-2070 – Funded by NT and E.L.M.

**4.50** The ongoing management of the newly created/ restored habitat, the second phase of habitat creation, and ongoing veteran tree management will be delivered by the Shugborough Parkland & Countryside team, funded by E.L.M. 2025-2035 and National Trust ongoing. This will include:

- Managed grazing of wood pasture and heathland areas. Ongoing management of newly planted trees.
- Restoration of lower priority areas, and removal of remnant conifer as newly planted broadleaf wood pasture has had time to establish.
- Continued implementation of veteran tree management strategy.
- Increasing parkland tree cover.

#### When – timescales for delivery

Table 4.4: Timescale for project delivery

	2021						2021	2022	2023	2024	2025
	J	F	M	A	M	J					
Development phase											
Delivering priority works											
Management until 2070											

#### Costs

##### Funding requested:

- Capital costs: £268,187

**TOTAL funding requested = £268,187**

- Match funding and in-kind contribution: £73,167



## Chapter 4

### The Environmental Enhancement Projects

Trent-Sow Parklands and Cannock Chase AONB HS2 Group - Environment Enhancement Plan  
March 2021

#### Legacy –how benefits will be maintained / monitored

**4.51** Delivering the habitat benefits of this project will require ongoing management for at least 50 years. Key tasks are laid out in *Phase 3: Ongoing Management and Second Phase of Habitat Works 2025-2070* above.

**4.52** Whilst access benefits are not a key part of the project, current levels of access will be maintained. Where possible, opportunities to extend access will be considered during the on-going management plan.

**4.53** All land in this project is directly owned by the National Trust with 92 ha of project land being held inalienably (meaning its sale is effectively impossible without the approval of Parliament). The National Trust is committed to the ongoing management of its land to maintain good environmental condition.

**4.54** Part of the Project Manager's role will be to support the Trust in seeking E.L.M. funding to deliver the first and most cost intensive 10 years of management. As part of the land is designated as SAC/SSSI, and the rest is adjacent to and impacts the SAC/SSSI, the land should score highly in the E.L.M. targeting process.

**4.55** The ongoing management of this land will be funded by the National Trust through a variety of sources including:

- Shugborough's visitor business: Shugborough received over 230,000 visits in 2019, and has 2 permanent and 1 pop-up catering outlets, 3 retail outlets, 2 holiday cottages and 10 private rental lets. Although this business suffered significantly in 2020 due to Covid19, strong recovery is anticipated with growth beyond 2019 levels anticipated within 3-5 years.
- Timber and firewood sales resulting from ongoing management, and eventual supply of biomass to Shugborough's heating facilities.
- Direct charitable donation; Shugborough is a pilot property for the National Trust's new outdoor fundraising campaign.
- Agri-environment and forestry grants.

**4.56** Ongoing management cost will be kept low as the main mechanism of management grazing will be let out to a tenant grazer or grazed by Shugborough's Parkland & Countryside

team, delivering at neutral cost or even raising revenue. In addition, many maintenance tasks will be able to be delivered through volunteer activity.

#### Key Statistics

- Staff involved in delivery: 5
- Volunteers involved: 30
- Estimated people benefitting/ engaged per year: 230,000 – all visitors to the Shugborough Estate will benefit from the improved landscape character, even if they do not go into it specifically. This is due to the location around the A513 and the property's main visitor approach route.
- Amount of habitat created: 40 ha
- Trees and shrubs planted: up to 2,609, comprised of a combination of 712 standard (primarily oak, beech, lime, sweet chestnut) and 1,897 shrubs (hawthorn, hornbeam, rowan, field maple, etc.)
- Area of historic landscape / features restored 48 ha

#### HS2 Green Corridor Benefits



Ecology & biodiversity



Arts & culture



Access & recreation



Landscape character



Historic environment



Climate change



Regeneration



Food & Farming



Water improvements



Health & wellbeing



Socioeconomic etc.



Stronger communities

## Chapter 4

### The Environmental Enhancement Projects

Trent-Sow Parklands and Cannock Chase AONB HS2 Group - Environment Enhancement Plan  
March 2021

#### **The project was approved subject to the following provisos:**

- The NT will continue to work with Cannock Chase AONB to monitor beneficial landscape change, and make the most of the opportunity to use this project as a catalyst for wider change on the Chase.
- The NT will ensure the following organisations are consulted on the project development plan: HE, Forestry England, Natural England, SCC County Archaeologist and SWT

## Chapter 4

### The Environmental Enhancement Projects

Trent-Sow Parklands and Cannock Chase AONB HS2 Group - Environment Enhancement Plan  
March 2021

## Project F – Changing Landscapes

### Lead Delivery Partner

Ingestre Hall / Sandwell Council

### Supporting partners

Newave Education – artist contracts provider

### Project Aims and Outcomes

The project aims to engage visitors with the local landscape through an artist in residence programme and through the construction of an outdoor classroom. The following outcomes will be achieved:

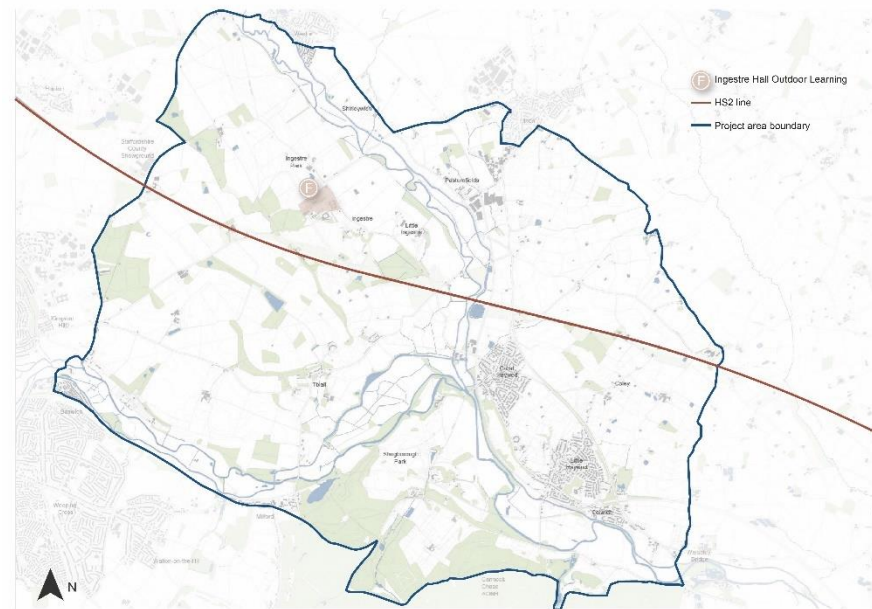
- Outcome 1: children participating in the project will learn about the area through visits, undertaking artist in residence facilitated exercises to interpret the area, having a creative/artistic response to the area that can be shared with an audience, evaluating their experience of participation, creation and sharing (typically 20 – 25 hours contact and participation time)

Further outcome: for up to 50% of the participants will undertake and receive Arts Award qualification (Trinity College) demonstrating their creative and artistic engagement and production of work and which acknowledges and responds to the Trent Sow Enhancement Plan

- Outcome 2: Children accessing the outside classroom as part of residential arts education programmes
- Outcome 3: Children accessing the outside classroom as part of day trips
- Outcome 4: Adult educators accompanying and developing skills through supporting children's residential trips
- Outcome 5: Audience visitors to exhibitions (artist in residence curates a summary exhibition upon concluding their residency)
- Outcome 6: online exhibition as dedicated space on website charting the projects and works produced

- Outcome 7: Ingestre Hall hosts 2 special exhibition visits from Sandwell Council leaders and senior members of youth services, education services, arts and cultures services - local Staffordshire dignitaries and local stakeholders also invited
- Outcome 8: Ingestre Hall recognition - Hall receives local and national recognition among related sector organisations and local/national press recognising its achievements
- Outcome 9: Ingestre Hall tutors - skilled in using the theme as an ongoing tool for future visiting groups
- Outcome 10: Provide and articulate tangible benefits to other local initiatives, projects and organisations to deliver on their objectives where aligned to Trent Sow Enhancement Plan
- Outcome 11: Ingestre Hall - provide further incentive for practice innovation and research
- Outcome 12: Ingestre Hall – preparation for students to achieve John Muir award.

Figure 4.6: Location of Project F – Changing Landscapes







Ingestre Hall



Proposed outdoor learning space

### Method and approach

**4.57** Ingestre Hall Arts Centre will manage the project as an in-house additional programme alongside its existing education offer for children and young people. The project will further provide opportunity and support for adult engagement, particularly where adults have responsibility for and interests in education, arts and heritage. There are 2 distinct strands to Changing Landscapes:

#### 1) Artist in Residence Programme:

- Supported by the Head of Centre, Ingestre's tutorial team will recruit an Artist in Residence for 11 weeks during the summer period April - July 2022 and April - July 2023.
- The recruitment process will be open to any artists working in arts discipline (managed in line with Safer Recruitment) and include a clear job description detailing that the artist will be required to work with the visiting groups, as part of and as an extension to the residential programmes, to deliver the project outcomes.
- The artist will be further required to produce their own artistic responses to the project that can be permanently exhibited in the hall or in the grounds.
- The artist will be required to create an exhibition charting their work and involvement in the project.

## Chapter 4

### The Environmental Enhancement Projects

Trent-Sow Parklands and Cannock Chase AONB HS2 Group - Environment Enhancement Plan  
March 2021

- Where possible the artist will be required to support other local initiatives and groups to access the hall, the grounds and local spaces (for example; a visiting arts class, a history group project visit, a children's day visit).
- The artists contract and payment will be managed and administered through Newave Education under the direction of Ingestre Hall. The artist will be managed and supervised by Ingestre Hall tutorial and leadership team.
- The artists will complete a set weekly evaluation alongside any other evaluation that the artists undertake as part of personal practice.
- The artist in residence will be entitled to accommodation and some on-site subsistence during the period of residency.
- 5 days of the artist in residence time has been allocated to pre-delivery planning and arranging and attending the final summer exhibition.

#### 2) Outdoor Activity Space (planned build January - March 2022)

- An outdoor activity space in the style of an open barn will be installed to allow up to 30 participants to undertake art-based activities tied to the programme of work they are undertaking within the hall, or as part of a day visit. This includes:
  - Groups of children and adults in residence
  - Groups of children and adults on day visits
  - Arts activities for visitors from local community groups and organisations (activities may be self-directed or facilitated by Ingestre Hall)
- Work produced within and as a result of the Outdoor Learning Space will feature and be shared as part of the overall collective output from the project. The Senior Tutor will be responsible for ensuring activity is documented and shared.
- The Outdoor Learning Space will be available to all groups attending residential programmes as part of the funded programme from April 2022 until July 2023. An extension phase will then commence and conclude in July 2030 phase during which time the project will be measured in line with the outcomes set out in the bid.

## Chapter 4

### The Environmental Enhancement Projects

Trent-Sow Parklands and Cannock Chase AONB HS2 Group - Environment Enhancement Plan  
March 2021

- The design of this space will be important to ensure that it is fitting of the high end landscape setting and so the involvement of an architect to design the space will be required.

3) All project deliverers will be required to capture and record key moments of the project delivery (in line with Ingestre Hall's GDPR and Child Protection policy) and make them available for use on the website and in display.

4) The project allows for creative output, learning and impacts to be stated and presented indefinitely on the Halls website.

### When – timescales for delivery

Table 4.5: Timescale for project delivery

	2021												2022												2023											
	J	F	M	A	M	J	J	A	S	O	N	D	J	F	M	A	M	J	J	A	S	O	N	D	J	F	M	A	M	J	J	A	S			
Acquire planning consent																																				
Project planning																																				
Construct Learning Space																																				
Resident artist programme																																				
Access to Learning Space																																				
Project evaluation																																				
Extension phase (to 2030)																																				

### Cost

#### Funding requested:

- Capital costs: £48,305

**TOTAL funding requested = £48,305**

- Match funding and in-kind contribution: £6,000

### Legacy – how benefits will be maintained / monitored

**4.58** Changing Landscapes presents a unique opportunity to improve the quality of educational outcomes for a generation of learners to Ingestre Hall. The benefits will be systematically recorded and shared at the regularly scheduled strategic and curriculum development meetings and ensure impact is sustained and embedded as far as possible. The wider impact resulting from community intervention and project sharing will be measured to ascertain benefits and support efforts to improve educational and social outcomes for local people.

#### Key Statistics

Primary Staff involved in delivery:

- Artists in residence (x 2), Head of Centre (project lead) Senior Arts Tutor (project coordinator and supervisor), Assistant Arts Tutors (as part of residential arts delivery team),
- Other Staff involved in delivery: administrator, site supervisor, staff and volunteers from Ingestre Orangery

Participants:

- Outcome 1: Young Participants (500 Arts Awards) 1000
- Outcome 2: Young Participants 2000
- Outcome 3: Young People Day Trips 400
- Outcome 4: Adult educators Day Trips 40
- Outcome 5: Visitors to exhibitions 100
- Outcome 6: Online exhibition viewers 1000
- Outcome 7: Special guest visits 40
- Outcome 8: Ingestre recognised in local/National press and industry publications
- Outcome 9: Ingestre Hall tutors 6
- Outcome 10: Project profiled/referenced in local publications
- Outcome 11: Summary published on research section of Ingestre website
- Outcome 13: Ingestre Hall completes John Muir integration assessment

Total estimated people benefitting from direct participation/engagement: 4514

## Chapter 4

### The Environmental Enhancement Projects

Trent-Sow Parklands and Cannock Chase AONB HS2 Group - Environment Enhancement Plan  
March 2021

#### HS2 Green Corridor Benefits



#### **The first proposal in relation to the outdoor classroom was approved in principle, subject to the following provisos:**

- Funding for this element is conditional on securing planning permission (or at least positive preapplication discussions identifying a suitable site and design approach) before the funding agreement is signed. SMBC should engage SBC Conservation officers (and HE) as soon as possible to find a suitable approach. (An additional £10,000 is added to the budget to facilitate this item being built to a suitable standard).
- If planning permission cannot be secured for a permanent facility a temporary facility could be considered.

#### **The second proposal in relation to the Artist in Residence was approved.**



## Chapter 4

### The Environmental Enhancement Projects

Trent-Sow Parklands and Cannock Chase AONB HS2 Group - Environment Enhancement Plan  
March 2021

## Project G – Revealing Tixall's Halls

### Lead Delivery Partner

Cannock Chase AONB, Chase Through Time Volunteers

### Supporting partners

Staffordshire County Council's Historic Environment Team, Historic England, Shropshire Caving and Mining Club, Association for Industrial Archaeology, Tixall Parish Council, The Landmark Trust, Cannock Chase Young Archaeologists' Club and local schools

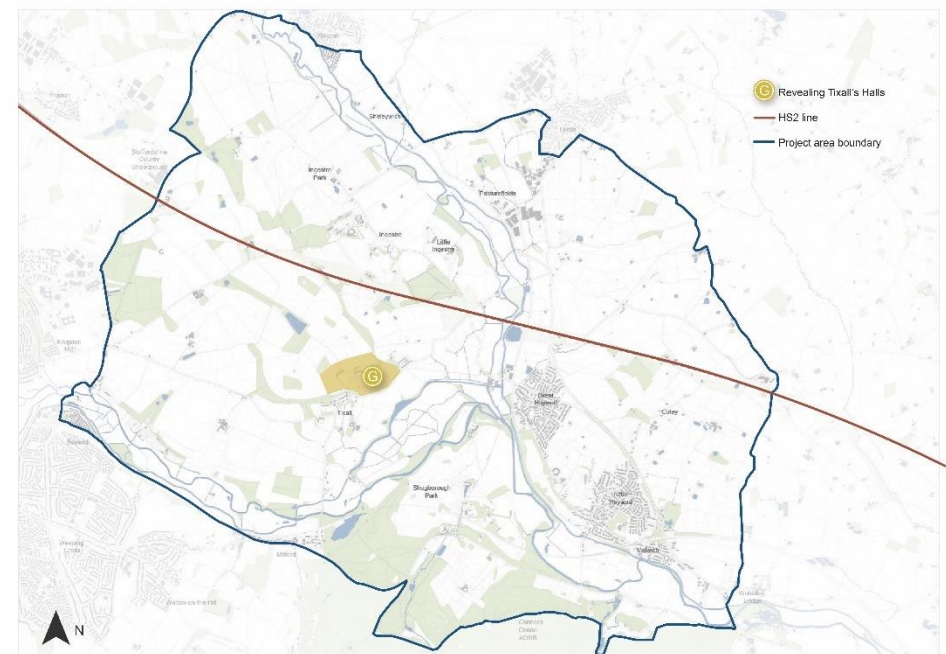
### Project Aims and Outcomes

- The project will achieve a better understanding of the below ground archaeology and heritage around Tixall Gatehouse. This will inform appropriate management in the future.
- The nature and significance of the water supply and drainage systems will be better understood and documented, along with the underground Hydraulic Ram and Waterwheel systems in a relevant journal.
- The Chase Through Time Volunteers will gain further project management experience, will further hone their magnetometry skills, receive training in undertaking Ground Penetrating Radar Surveys, and have an opportunity to carry out intrusive archaeological investigations (in this case test pitting) for the first time, further adding to their archaeological experience.
- The local and wider community (including the local Young Archaeologists' Club) will be engaged and enthused by the heritage on their doorstep.
- Anne Andrews' contribution to her parish, its heritage, and indeed the wider heritage of the county will be celebrated.
- Assist towards the development of a longer-term legacy project – crowd funded, community focussed excavation of elements of the former Tixall halls.
- Ideas will be developed for a legacy project.



View from the east towards Shugborough and the halls beyond at Tixall and Ingestre, by Nicholas Dall

Figure 4.7: Location of Project G – Revealing Tixall's Halls



## Chapter 4

### The Environmental Enhancement Projects

Trent-Sow Parklands and Cannock Chase AONB HS2 Group - Environment Enhancement Plan  
March 2021

#### Method and approach

**4.59** The project will be delivered by the Chase Through Time Project Volunteer Group with funded project co-ordination and specialist support from a community archaeology-focused organisation and in-kind support from Historic England and Staffordshire County Council Historic Environment Team. A project steering group will be set up to help develop the vision for the project and ensure that it is successfully delivered.

**4.60** It is envisaged that the project will comprise the following elements which will contribute towards its suggested outcomes:

- Overall Project Co-ordination - the project will be directed by the County Archaeologist, with the AONB acting as the fund holder, and elements of the project being delivered by the Staffordshire Historic Buildings Trust. Chase Through Time Volunteer Group supported by community-focussed archaeological organisation and Staffordshire County Council's Historic Environment Team. Oversight by project steering group.
- Geophysical Survey (Tixall Halls) - undertaken by the Chase Through Time Volunteer Group with loan of equipment and support from Historic England including community involvement.
- Geophysical Survey (below ground water-power system) – undertaken by a specialist contractor engaged by the community archaeology-focussed organisation. This will involve magnetometry followed by a targeted Ground Penetrating Radar survey.
- Test Pitting - carried out by the Cannock Chase Young Archaeologists' Club and the Chase Through Time Volunteers, under the supervision of professional archaeologists from the community archaeology-focussed organisation.
- The exploration of the tunnels/culverts will be carried out by the Shropshire Caving and Mining Club, and assistance with recording of these will be provided by experts from the Association for Industrial Archaeology and members of the Staffordshire Industrial Archaeology Society.
- As part of the public engagement day(s) tours highlighting the village's rich architectural history will be carried out by experts such as the Stafford Borough Council Conservation Officer, whilst tours of Capability Brown's Tixall Hall Gardens will be carried out by Staffordshire Parks and Gardens Trust. Opportunities to engage The Landmark Trust will

also be explored to see how they might be interested in including Tixall Gatehouse as part of this 'offer'.

- Public engagement, media, social media will be managed by the community-focussed archaeological organisation.

**4.61** The results will be written up as a collaboration between the Chase Through Time volunteers and the community-focussed archaeological organisation, and will be published in an appropriate journal.

**4.62** Consideration will also be given to a possible legacy project which may involve further community-focussed excavation of the Tixall Hall remains.

#### When – timescales for delivery

**4.63** Project development will commence immediately after approval. It is currently anticipated that the project will be 'run' over two weekends - the first weekend will involve the geophysical survey, other survey, and trial pitting. The second weekend will have a heritage 'festival' feel, and will showcase the results of the fieldwork, and be framed as a celebration of the late local historian Anne Andrews' love of Tixall and its heritage.

**4.64** Given the current restrictions due to COVID19 it is anticipated that the surveys and associated event would take place in summer 2022.

**4.65** A publication outlining the results of the project would be prepared and submitted for inclusion in a relevant journal within 6 months of fieldwork commencing.

**Table 4.6: Timescale for delivery showing two options depending on project start date**

	2022						2023									
	J	A	S	O	N	D	J	F	M	A	M	J	J	A	S	O
Project development																
Surveys & trial pitting																
Heritage festival																
Publication of findings																

## Chapter 4

### The Environmental Enhancement Projects

Trent-Sow Parklands and Cannock Chase AONB HS2 Group - Environment Enhancement Plan  
March 2021

#### Cost

**Total funding requested: £18,000**

#### Legacy – how benefits will be maintained / monitored

**4.66** Reporting on the outcomes of the project will be logged at the Staffordshire Historic Environment Record (HER), and a publication will be submitted for inclusion in an appropriate journal. A copy of which will be provided to the HER and the Staffordshire Record Office.

**4.67** Ideas for a legacy project will be developed.

#### Key Statistics

- Staff involved: minimum 4 staff from the community-focussed archaeological organisation will be involved in the development and delivery of the project. It is also anticipated that 2 members of staff of a specialist geophysical survey organisation will carry out the Ground Penetrating Radar Survey
- Volunteers involved – Chase Through Time Volunteers – at least 6 plus anyone else that we can engage with the project, including the local community, the Young Archaeologists' Club, and specialists from the Shropshire Caving and Mining Club and the Association for Industrial Archaeology.
- Estimated people benefitting/engaged per year- difficult to quantify at this stage but given the community and volunteer elements of the project this will be a key output.

#### HS2 Green Corridor Benefits



Ecology & biodiversity



Arts & culture



Access & recreation



Landscape character



Historic environment



Climate change



Regeneration



Food & Farming



Water improvements



Health & wellbeing



Socioeconomic etc.



Stronger communities

**This project was approved at the November 3 meeting.**





## Chapter 5

### Summary and next steps

This chapter presents a summary of what the seven endorsed projects will achieve for the project area.

#### Overview

Figure 5.1: Total benefits of the Enhancement Projects and how they contribute to HS2's Green Corridor Benefits

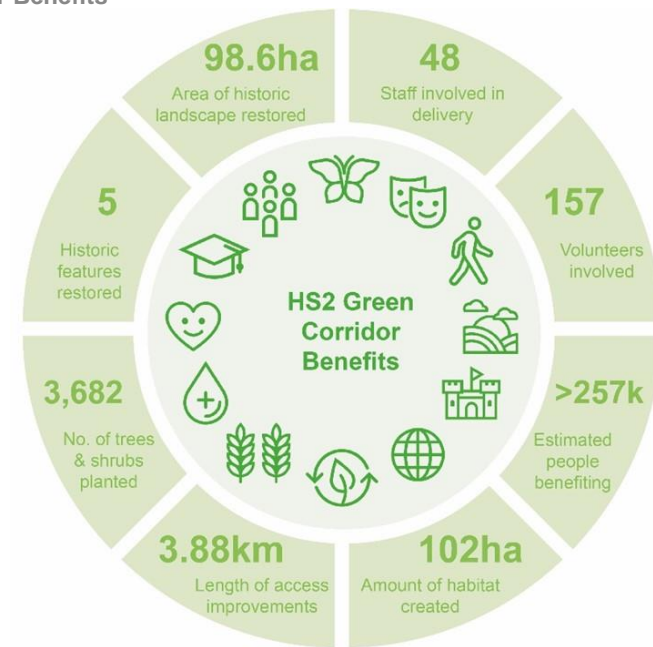
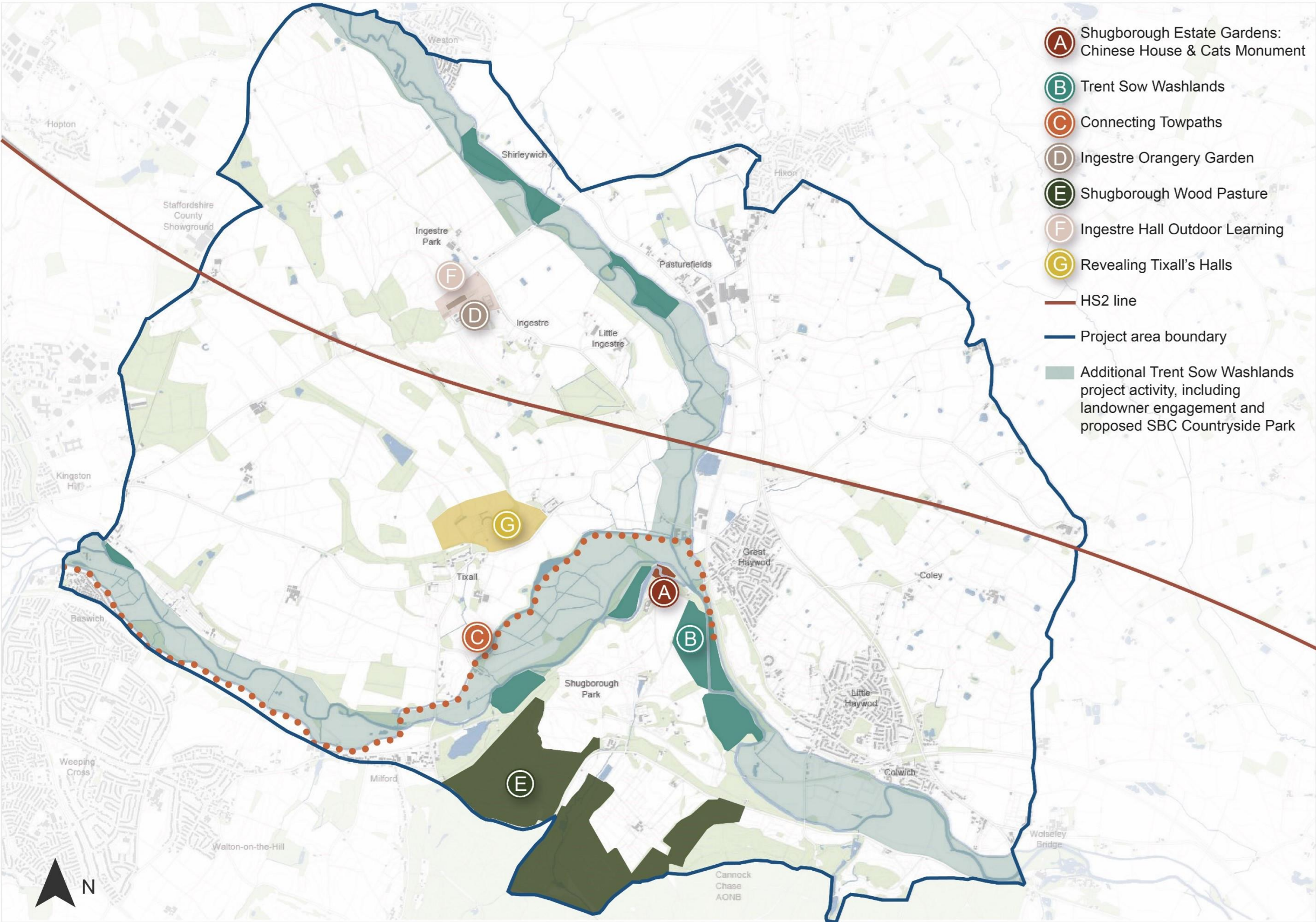




Figure 5.2: Visual masterplan showing Environmental Enhancement Projects and the HS2 line within the Trent-Sow landscape





## Chapter 5

### Summary and next steps

Trent-Sow Parklands and Cannock Chase AONB HS2 Group - Environment Enhancement Plan  
March 2021

### Geographical spread

**5.2** The seven projects achieve a good geographic spread across the project area, with the Washlands (b) and Towpaths (c) projects providing good access and biodiversity connectivity and linkages through the area. **Figure 5.2** shows the spatial coverage of the projects across the project area in relation to HS2 infrastructure.

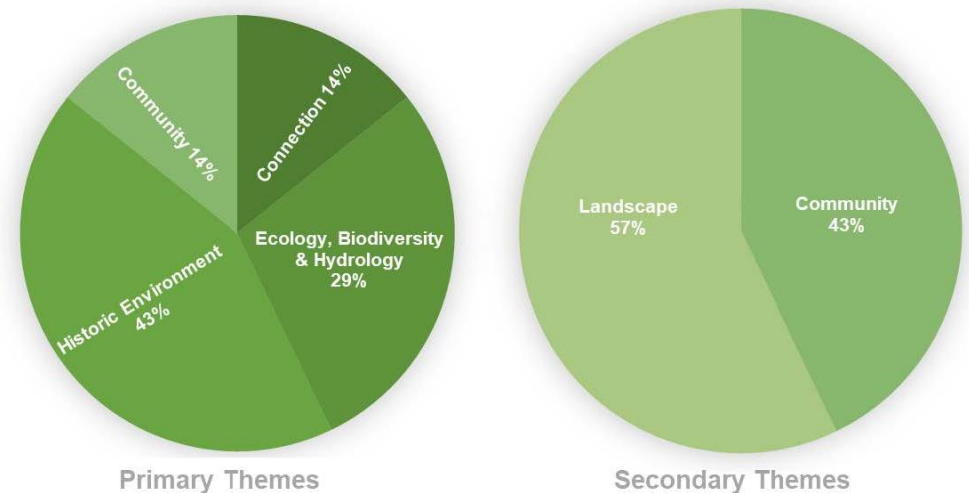
**5.3** There is a gap in the eastern part of the project area along the route of the line; projects proposed in this area unfortunately did not come to fruition.

### Environmental themes and benefits

**5.4** In line with the Design Principles, projects were allocated to one of five themes as part of the shortlisting process. These included: Historic Environment, Ecology/Biodiversity/Hydrology, Landscape, Community, Connections. A primary theme and secondary theme were identified for each.



**Figure 5.3: Environmental Enhancement Projects themes**



**5.5** The split of themes between the number of projects is shown in **Figure 5.3**. They achieve a good representative split across the themes, with an almost even split between landscape and community underlying the projects as secondary themes.

### Range of benefits

**5.6** HS2 has identified 13 key green infrastructure benefits<sup>2</sup>, 12 of which are relevant to the projects within the project area (the thirteenth, Public Space, relates to 'creating, conserving, or improving parks, gardens, playing fields and other public open spaces in towns and cities' and is therefore not relevant to the project area). The Projects were assessed against these benefits and the outcomes detailed in **Figure 5.4**.

<sup>2</sup> HS2, 2020. HS2 Ltd Green Corridor Prospectus. <https://www.hs2.org.uk/documents/green-corridor-prospectus/> [Accessed 07/11/21]



## Chapter 5

### Summary and next steps

Trent-Sow Parklands and Cannock Chase AONB HS2 Group - Environment Enhancement Plan  
March 2021

Figure 5.4: Environmental Enhancement Projects benefits

	Ecology & biodiversity	Arts & culture	Access & recreation	Landscape character	Historic environment	Climate change	Regeneration	Food and farming	Water improvements	Health and wellbeing	Socioeconomic, skills, education & employment	Stronger communities
A – Shugborough Estate Gardens												
B – Trent & Sow Washlands												
C – Connecting Towpaths												
D – Ingestre Orangery Gardens												
E – Shugborough Wood Pasturescape												
F – Changing Landscapes												
G – Revealing Tixall's Halls												

**5.7** The projects deliver well across the HS2 Green Corridor benefits with all of the 12 benefits applicable to the area met by at least one of the projects. Most notably, all of the projects provide some element of socioeconomic, skills, education or employment to the communities and visitors to the project area, and almost all the projects will bring enhanced social cohesion, and health and well-being benefits. Almost all of the projects also will contribute towards preserving or recording the historic environment which should foster a deeper understanding of the heritage of the area. Water improvements will only to be delivered by one project (Trent & Sow Washlands, **b**), however, the contribution that project will make to the water environment within the project area will be substantial.

### How the Enhancement Fund will be spent

**5.8** All seven of the Stage 2 projects were unanimously approved to be put forward for funding, subject to provisos being met. The project applications originally accounted for 97.7% of the £1.5 million project budget, leaving 2.3% of the budget (just short of £35,000) unallocated. Further consideration was given to how the £35k shortfall could be spent.

**5.9** During the presentation and discussion of the projects on 3 November, the Review Group agreed to allocate a further £22,500 of funding to support the seven projects to achieve their aims (further detail is provided on this split of additional funds under each project in Chapter 6). This left £12,800 (1%) of funds unallocated which it was decided would remain unaccounted for as a contingency to be allocated to existing projects should it be required at a later date (**Figure 5.5**).

**5.10** In addition, to ensure the work of the group to develop the Ingestre Walks project was not lost, it was proposed to fund the write up of the project as a feasibility study from the Review Group's administration budget. This proposal was approved with a budget of £5-8,000 reserved for the work. This will ensure that the project can be picked up in the future should the current issues around land ownership and access be resolved.

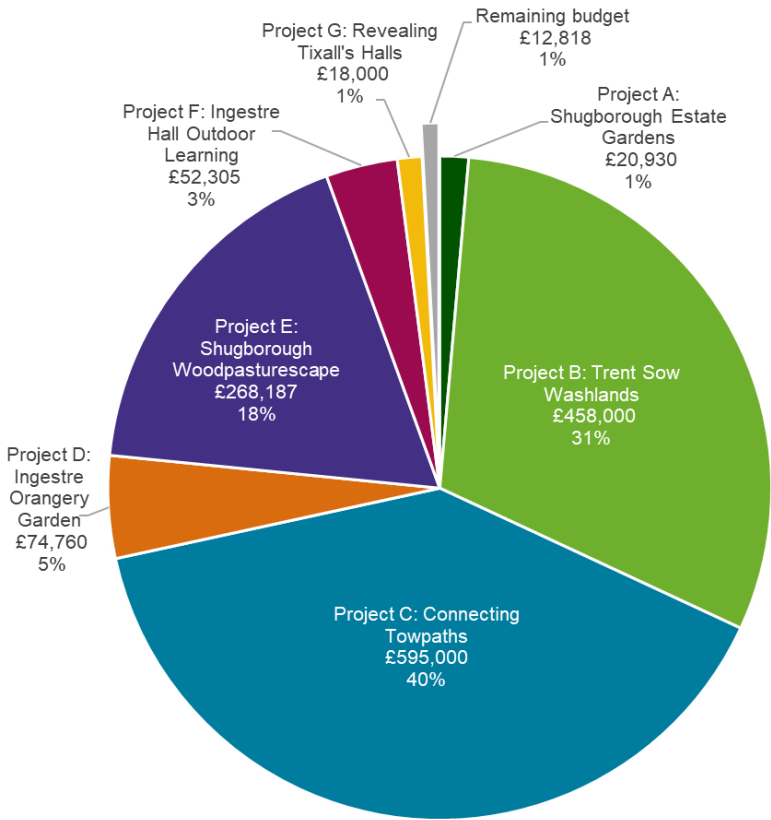
### The split of funding

**5.11** **Figure 5.5** illustrates the split of funding across the projects. There are six submitting organisations across the seven projects, with the largest proportion of funding to be spent on the most ambitious projects in terms of scale of benefits. These larger projects will be delivered

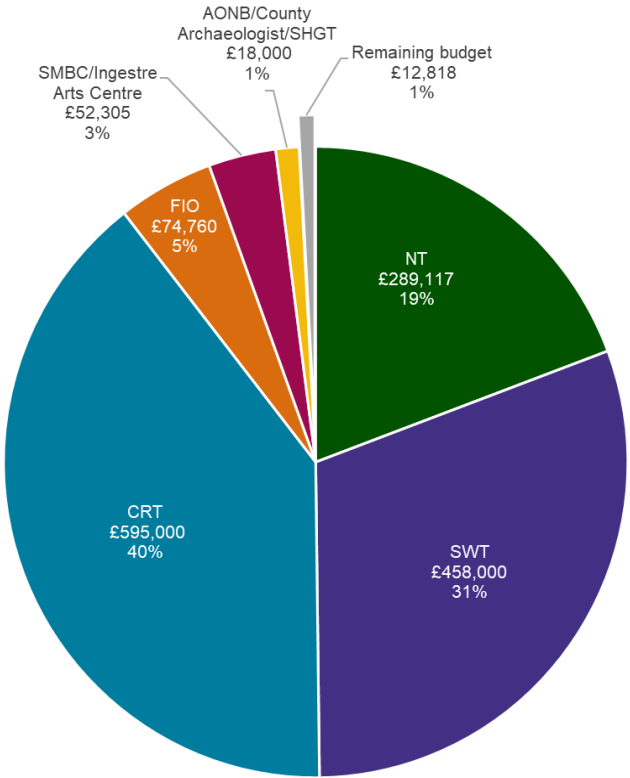
by established third sector organisations with extensive relevant experience in project delivery. Six percent of the funding will be awarded to projects being delivered by community groups, with support from experienced project partners such as Staffordshire County Council and the Cannock Chase AONB.

**5.12** Income generated from in-kind contributions and match funding is considerable, projected to amount to in the region of £358,131.

**Figure 5.5: Split of enhancement funding by project**



**Figure 5.6: Balance of organisations receiving funding**



### Next steps

**5.13** All projects were unanimously approved (subject to provisos set out in Chapter 4) by the Review Group and HS2 in principle at the meeting in November 2020 to be put forward for funding.

**5.14** This document presents the EEPs for adoption. Following the finalisation of this document in February 2021, it will be submitted to the Secretary of State for formal adoption, with a projected start date for project delivery of Summer 2021.

## Appendix A

### Prioritisation criteria

#### Trent-Sow Parklands and Cannock Chase AONB HS2 Group: Prioritisation Criteria for Enhancement Proposals [v0.4 28/06/19]

**A.1** Context: HS2 provided an assurance to the National Trust that it would 'fund reasonable measures that align with purpose and scope of the Group up to a combined total value of 1.5 million' and are 'within the Group's area of remit but outside of Act limits' (14 May 2018). The projects will form part of an 'HS2 Environmental Enhancement Plan'.

**A.2** All projects must therefore meet the following eligibility criteria:

1. Be situated beyond Act limits<sup>3</sup>
2. Lie within the Group's study area

---

<sup>3</sup> This does not preclude the Group from recording aspirations for enhanced mitigation within (or crossing into) Act Limits, in case they can be progressed in other ways.



Draft criteria	Application	Scoring <sup>4</sup>
1. Fits with Vision Statement	The project supports the vision for the area.	5 Completely: The project clearly supports the area's vision 3 Partially: The project partially supports the area's vision. 1 Not at all: The project does not support the area's vision.
2. Helps to integrate the HS2 Scheme	The project helps to integrate the HS2 Scheme into the environment, over and above the Environmental Statement mitigation; and/or provides enhancements within the wider project area.	5 Completely: An 'on the ground' project. It is within 1km of the line and/or clearly helps to integrate the HS2 Scheme. 3 Partially: The project is within the project area and/or partially helps to integrate the HS2 Scheme. 1 Not at all: The project is not on the ground, within the project area and /or helps to integrate the HS2 Scheme.
3. Complies with published objectives	The project meets existing objectives set out in published plans and strategies <sup>5</sup> . These objectives include the conservation and enhancement of natural beauty (including wildlife) and/or cultural heritage, access and contribution to green infrastructure.	5 Completely: The project meets many objectives in one or more published plans/strategies. 3 Partially: The project meets some objectives in a plan/strategy. 1 Not at all: The project does not meet the objectives of any existing plans/ strategies.
4. Delivers a range of benefits <sup>6</sup>	The project delivers a range of benefits, including for landscape character, heritage, biodiversity, recreation and access, water, the community and local economy.	5 Completely: The project delivers multiple benefits/ecosystem services relevant to the project area or delivers a specific desired benefit. 3 Partially: The project delivers some benefits. 1 Not at all: The project does not deliver any benefits relevant to the area.
5. Links with other projects	The project has good spatial, functional or other links with other enhancement proposals and detailed design principles.	5 Completely: The project clearly complements other enhancement proposals and/or mitigation works within Act Limits. It physically contributes to a fully rounded package of enhancement and integration measures. 3 Partially: The project has some links with other enhancement/ mitigation measures.

<sup>4</sup> A score of '1' against a particular criterion does not preclude a project from being considered for shortlisting.

<sup>5</sup> E.g. Cannock Chase AONB Management Plan 2019-2024, Conservation Management Plans for historic estates, Local Landscape Character Assessments, Historic Landscape Character Assessments, Green Infrastructure Strategies, Biodiversity Action Plan, Local Economic Partnership Plans, Rights of Way Improvement Plan and Local Transport Plan

<sup>6</sup> The Group may review the overall list of projects to be shortlisted to ensure that the Environmental Enhancement Plan will address the vision as a whole.

Draft criteria	Application	Scoring <sup>4</sup>
		1 Not at all: The project is a 'stand-alone' proposal.
6. Has stakeholder support	The project has stakeholder support, as demonstrated through workshops.	5 Completely: The project is supported by stakeholders, as demonstrated through analysis of workshop feedback. 3 Partially: The project has some stakeholder support. 1 Not at all: The project does not have stakeholder support.
7. Offers value for money	The project provides value for money, realising maximum benefits for the HS2 corridor at an appropriate cost, and provides opportunities for leveraging additional funding.	5 Completely: The project provides high value for money creating many benefits for a reasonable proportion of the budget and/or scope to bring in additional funding. 3 Partially: The project provides some positive benefits at a reasonable cost and/or may bring in a small amount of extra funding. 1 Not at all: The project does not provide value for money or requires a disproportionate amount of the budget. It does not provide scope for bringing in additional funding.
8. Is deliverable	The project is achievable and deliverable, within an agreed time period. It does not require substantial investment in staff/resources or involve a high level of risk.	5 Completely: The project is deliverable relatively easily with existing staff/partners. It has a low level of risk, e.g. regarding securing land and permissions. 3 Partially: The project is deliverable but will need extra staff/new partners and/or has some degree of risk. 1 Not at all: The project is not deliverable without substantially more staff/a new partnership; and/or there is a high degree of risk in relation to land ownership and permissions.
9. Is viable long-term	The project can be sustained and is financially viable with long-term management arrangements and resources secured. It provides a long-term positive environmental legacy for the area.	5 Completely: The project has long-term land ownership/management/ maintenance agreements in place and revenue/ capital costs covered. It creates a long-term legacy. 3 Partially: The project could potentially be sustained long-term but further work is needed to secure landowner management ownership/ agreements/funding. 1 Not at all: The project has significant challenges to become sustainable and financially viable in the long-term.

## **Appendix B**

### **Long list of projects**

**Long list of projects reviewed against the eligibility criteria.**



Ref	Name	Proposed by	Led by	Description	Criteria 1: Situated beyond Bill limits	Criteria 2: Lie within the Group's study area	Eligible?
1	Wood Pasture Connections	National Trust	National Trust	<p>This project will create or restore approximately 50Ha of wood pasture priority habitat and associated habitats on undesignated land currently managed as conifer plantation, connecting the wood pasture and parkland priority habitat of Shugborough parkland to the wood pastures of Brocton Coppice. To include infrastructure for long-term management (grazing) and access.</p> <p>NE offered £20k match funding for project development.</p>	Yes	Yes	Yes
2	Shugborough floodplain grasslands	National Trust	Wildlife Trust	<p>38Ha of Floodplain Meadow Grassland restoration/creation (lowland meadow priority habitat). This project will deliver the capital phase of a floodplain meadow restoration plan through: seed introduction via over-sowing, plug planting and bulb planting; improving access to facilitate hay cutting; and improving grazing infrastructure to facilitate aftermath grazing. It will also create a new permissive riverside footpath, formalising and improving existing informal access and opening access to new areas.</p>	Yes	Yes	Yes
3	Shugborough Gardens and Arboretum Visual Shielding	National Trust	National Trust	<p>Mitigate the visual and aural impact of HS2 on the north section of Shugborough's garden and arboretum (both parts of the grade 1 listed landscape) by increasing the visual shielding in these areas through evergreen planting. To include restoration of 18<sup>th</sup> century shrubbery walk, restoration and enhancement of landscape views, archaeological investigations into lost features to identify, protect and interpret.</p> <p>Cats Monument – needs opening up but concern over opening up HS2 views. Specific piece of work around views – KA to speak with Suzy to see if LUC can help with this.</p>	Yes	Yes	Yes

Appendix B  
Long list of projects

Trent-Sow Parklands and Cannock Chase AONB HS2 Group - Environment Enhancement Plan  
March 2021

Ref	Name	Proposed by	Led by	Description	Criteria 1: Situated beyond Bill limits	Criteria 2: Lie within the Group's study area	Eligible?
4	Great Haywood Junction Bridge	CRT	CRT	Enhancements to Scheduled Monument to conserve the structure and enhance user safety.	Yes	Yes	Yes. Group with 7, 10
5	SW Canal Habitat creation	CRT	WT?	Creation of soft bank habitat to the offside of the canal near Tixall Wide, screening unsightly sheet piles, vole habitat	Yes	Yes	Yes
6	Canal to Shugborough Links	CRT	WT?	Replacement interpretation and better wayfinding to link the canal network to Shugborough estate	Yes	Yes	Yes
7	Great Haywood Walking Cycling	CRT	WT?	Enhancements to heavily trafficked towpaths Great Haywood area	Yes	Yes	Yes. Group with 4, 10
8	Public Park creation	IWA	IWA	Creation of new public park and visitor moorings at Great Haywood Junction	Yes	Yes	Yes
9	Hoo Mill Lock	CRT	CRT	Improvements to approaches to Hoo Mill Lock to address poor quality paths that detract from this listed structure	Hoo Mill Lock is sandwiched between two sections of the Bill Limits.	Yes	Yes, although adjoining Bill limits so further information required.
10	Mill Lane Bridge	CRT	CRT	Improvements to existing access to the canal from Mill Lane Bridge, works to address deteriorating underpass beneath the bridge, improvements for people with disabilities, improve highway footway.	Yes	Yes	Yes. Group with 4, 7

Ref	Name	Proposed by	Led by	Description	Criteria 1: Situated beyond Bill limits	Criteria 2: Lie within the Group's study area	Eligible?
11	Parklands Initiative	SCC Shane Kelleher	SC to confirm. LUC to support proforma development?	Survey, restoration and conservation management. Restore/recreate parts of Ingestre Parkland eg. old Golf Course?	Partly. The HS2 line bisects the historic footprint of Ingestre historic parkland.	Yes	Likely. Further information is required.
12	Potential FE land transfer	AONB Richard Harris	AONB	Heathland restoration, potential new forest for landscape enhancement and as SANGS. Reversing 70 years of harm through forestry plantation.  Links to Shugborough project. Support through development phase as opposed to funding land transfer (which would absorb HS2 pot).	Yes	No	No – Grid ref provided is outside project area.
13	Chase Through Time legacy projects	SCC Shane Kelleher	SC to confirm (was AONB project)	Enhanced understanding of historic features on the Chase	Yes	Yes.	Yes. Project based within AONB.
14	Historic coalway permissive route	Shane Kelleher SCC / Chris Welch(?) HE	SC to confirm	Route linking Haywood Warren to Essex Bridge	Yes	Partly. Haywood Warren is just outside project boundary	Likely. Further information required.
15	Ingestre and Tixall HE enhancements	? TILHG / SCC	SC to support	Potential projects suggested by Ingestre and Tixal LH Group.  11 Sep workshop idea: Local heritage linked to airfield and WW2 including Hixon Control Tower and RAF Hospital. Land owned by Hixon Airfield	?	?	Not enough information



Ref	Name	Proposed by	Led by	Description	Criteria 1: Situated beyond Bill limits	Criteria 2: Lie within the Group's study area	Eligible?
		Hixon PC (11 Sep)		services. Project to record and conserve structures. Could be part of Ingestre Local Heritage Project? Airfield is currently outside project area.  11 Sep workshop idea: Shirleywich Farm A local landscape feature/landmark here in form of a canal spur – could be part of wider local unlisted heritage recording/conservation project.			
16	Ingestre-Tixall-Shugborough Link	HE	LUC to proforma	Pedestrian-Cycle link across the proposed HS2 green bridge to link to the three estates. The current problem is that the only existing crossings of the Sow/Trent are at Tixall Bridge (a road bridge) and Essex Bridge, so another crossing would be needed. There used to be a bridge (until about 1805) at Old Hill Bridge, just downstream of Tixall Bridge. This (or another) would give access into Shugborough, and then a return via Essex Bridge and the canal, with a connection from the canal to Ingestre somewhere in the region of the proposed golf course extension. Includes interpretation & wayfinding.  SC query over whether this will be possible – re-visit guidelines.	Yes	Yes	Yes. Would require adjustments to HS2 proposals.
17	Ingestre Golf Course (North)	HE	SC to confirm	Remodelling of course north of HS2 (severed from course to the south) to reinstate physical & visual links with Ingestre Hall	Yes	Yes	Yes, although adjoining Bill limits so further information required. Link to 11.
18	Retracing the Coal route	HE	SC to confirm (see 14)	Coal was carried across Cannock Chase from Beaudesert, across Shugborough and Essex Bridge, probably to the brine pits at Shirleywich. The route can be easily followed across the Chase, but not into Shugborough. The route ran down to the modern A513 at a location on the	Yes	Yes	Yes. Further information required. Link to 14.

Ref	Name	Proposed by	Led by	Description	Criteria 1: Situated beyond Bill limits	Criteria 2: Lie within the Group's study area	Eligible?
				north side of Haywood Park (about at SJ994211) at a place once known as Riddings Green, through the wood still known as Coalpit Lane Covert. The proposal would be to make the latter stretch accessible - to provide the 'missing link'. This would require a crossing over (or under) the A513 to be introduced into Shugborough and then a route west (approx. 400m) to meet the Staffordshire Way, after which it can be followed to Essex Bridge. Includes interpretation & wayfinding.			
19	Conservation Area Management Plans	SBC / HE	SBC (SC to confirm)	(TBC) Preparation of management plans to support the Conservation Area Appraisals produced for: Ingestre, Tixall, Great Haywood & Shugborough, and Colwich & Little Haywood. <a href="https://www.staffordbc.gov.uk/conservation-areas-list">https://www.staffordbc.gov.uk/conservation-areas-list</a> .	Yes	Yes	Yes
20	Community Arts Project	AONB Julia Banbury	AONB (SC to confirm)	Project to explore historic landscape connections through community arts	Yes	Yes	Yes. Project based within historic parklands. Link to 11 and 17.
21	Colwich Brickworks heritage and habitat	SWT	WT	Colwich Brickworks - built in about 1900 and closed in about 1970. The site structures lay derelict until demolition in late 1980s, when part was developed for housing and the remainder became SWT's smallest nature reserve. Part of Local Wildlife Site complex with 2 diverse meadows to the north, and BAS grasslands to the east (all owned by a landowner in environmental stewardship). Valued by locals but little space on site for a long visit. Proposed project- heritage interpretation, tree management, creation of species-rich grassland on adjacent POS owned by SBC (agreed).	Yes	Yes	Yes

Appendix B  
Long list of projects

Trent-Sow Parklands and Cannock Chase AONB HS2 Group - Environment Enhancement Plan  
March 2021

Ref	Name	Proposed by	Led by	Description	Criteria 1: Situated beyond Bill limits	Criteria 2: Lie within the Group's study area	Eligible?
22	Wolseley-Colwich circular walk	SWT	LUC to proforma	Promoting access to Colwich Brickworks and linking to Wolseley Bridge via a circular walk with improved footpaths and habitat features in the surrounding landscape. Work with landowners to carry out hedgerow enhancement, wildflower margins, new fences, signs and stiles where needed. Produce a leaflet guiding walkers around the route with things to spot. Part of the walking route, along Bishton Lane, will be directly impacted by HS2 works, so this would link to, but not overlap with, HS2's mitigation.	Yes	Yes	Yes

## **Appendix C**

### **Stage 1 proforma template**



<b>Project Name</b>					
<b>Theme</b> <i>(Number Primary and Secondary theme)</i>	<b>Landscape</b>	<b>Historic environment</b>	<b>Ecology, biodiversity &amp; hydrology</b>	<b>Connections</b>	<b>Community</b>
<b>Map of project area</b>	<i>Either insert map here with project area identified, or append map with project area to this form</i>				
<b>Description of project</b>					
<b>Landowner</b>	<i>Name, contact details</i>				
<b>Delivery partners</b>	<i>Lead partner and anyone else that needs to be involved</i>				
<b>How does the project support the Vision?</b> <i>‘Conserving and enhancing the area’s special character and qualities to provide lasting benefit for its communities’</i>					

How does the project integrate the HS2 scheme into the Landscape?																	
What are the project's objectives?  <i>Quantify where possible, e.g. 10ha meadow priority habitat created; 100 people learn about local heritage, 3km of footpath restored, etc.</i>	<ul style="list-style-type: none"> <li><i>Bullet point desired outcomes</i></li> </ul>																
Project delivery	<i>Biodiversity</i>	<i>Geodiversity</i>	<i>Recreation</i>	<i>Tranquility</i>	<i>Landscape quality and</i>	<i>Historic environment</i>	<i>Sense of Place / inspiration</i>	<i>Pest regulation</i>	<i>Regulating soil erosion and</i>	<i>Regulating water flow and</i>	<i>Climate regulation</i>	<i>Production (biomass, timber</i>	<i>Water availability</i>	<i>Health benefits</i>	<i>Training / skills</i>	<i>Education / learning</i>	<i>Interpretation and</i>
Links to other projects; as part of this scheme, or in reference to other landscape projects in the area																	

Estimated cost	Low <£100k	Low – Medium £100k-£250k	Medium £250k- £500k	Medium-large £500k - £1m	High >£1m				
Value for money	<ul style="list-style-type: none"> <li><i>Outline development and delivery costs as below</i></li> </ul> <table border="0"> <tr> <td style="vertical-align: top;"> <b>Development Costs:</b>  Capital costs inc contractors, Feasibility Studies :  Staff costs:  Other revenue costs:  Volunteer or other in kind contribution:  Total costs : </td> <td style="vertical-align: top;"> <b>Delivery:</b>  Capital costs inc contractors:  Staff costs:  Other revenue costs:  Volunteer or other in kind contribution:  Total costs : </td> </tr> <tr> <td colspan="2"> <b>Total Project Costs:</b>  <b>Total Requested:</b>  <b>Intervention Rate:</b>    <b>Other sources of funding available?:</b>    <b>Other sources of funding secured?:</b> </td> </tr> </table>					<b>Development Costs:</b> Capital costs inc contractors, Feasibility Studies : Staff costs: Other revenue costs: Volunteer or other in kind contribution: Total costs :	<b>Delivery:</b> Capital costs inc contractors: Staff costs: Other revenue costs: Volunteer or other in kind contribution: Total costs :	<b>Total Project Costs:</b> <b>Total Requested:</b> <b>Intervention Rate:</b>  <b>Other sources of funding available?:</b>  <b>Other sources of funding secured?:</b>	
<b>Development Costs:</b> Capital costs inc contractors, Feasibility Studies : Staff costs: Other revenue costs: Volunteer or other in kind contribution: Total costs :	<b>Delivery:</b> Capital costs inc contractors: Staff costs: Other revenue costs: Volunteer or other in kind contribution: Total costs :								
<b>Total Project Costs:</b> <b>Total Requested:</b> <b>Intervention Rate:</b>  <b>Other sources of funding available?:</b>  <b>Other sources of funding secured?:</b>									
How will success be monitored?	<ul style="list-style-type: none"> <li><i>Indicators for monitoring success</i></li> </ul>								

<p>What preparatory work is required to develop the project? <i>(include lead in times where possible)</i></p>	<ul style="list-style-type: none"> <li>• <i>Further site survey and investigation</i></li> <li>• <i>Design development</i></li> <li>• <i>Options</i></li> <li>• <i>Consultation</i></li> </ul>		
<p>Risks to delivery</p>	<ul style="list-style-type: none"> <li>• <i>Landowner engagement secured</i></li> <li>• <i>Planning permission or other consents</i></li> <li>• <i>Long-term management responsibilities and costs</i></li> <li>• <i>Environmental sensitivities</i></li> <li>• <i>Conflict of interest</i></li> <li>• <i>Interaction with Bill Limits</i></li> </ul>		
<p>Stakeholder support</p>	<p><b>High</b></p>	<p><b>Medium</b></p>	<p><b>Low</b></p>
<p>1. <i>Supporting photographs and captions</i></p>			



## **Appendix D**

### **Scoring of Stage 1 applications**

Appendix D  
Scoring of Stage 1 applications

Trent-Sow Parklands and Cannock Chase AONB HS2 Group - Environment Enhancement Plan  
March 2021

\	Project name	Fits with the DP & Project Vision	Helps to integrate the HS2 Scheme	Complies with published objectives	Benefits groups	Offers value for money	Is viable long-term	Total	Is deliverable	Approx. cost	Delivers a range of benefits*	Comments
2	Floodplain meadow	5	5	5	5	5	5	30	5	£40,000.00	12	Dealing with habitat that is most impacted by HS2. Overlaps with wider WT project, good value for money. Viable longterm.
1	Wood pasture restoration	5	3	5	5	5	5	28	5	£205,000.00	10	Fits with Cannock Chase Mgt Plan. Fits with adjoining habitat projects so impact much greater than the project itself.
37	Trent Sow Washlands	5	5	5	5	5	3	28	5	£600,000.00	12	Large cost, but large benefits. Scalable. Potential to combine with woodpasture project?
4, 7	Connecting towpaths	5	5	5	3	3	5	26	5	£595,000.00	6	Strong local support. Area directly impacted by HS2. Query longevity of surfacing and price.
3	Chinese House, Cats Monument and Tennis court	5	5	3	3	3	5	24	5	£42,000.00	7	Behind pay barrier. Addresses most affected part of Shugborough.
45	New woodland planting	5	5	3	3	5	3	24	3	£4,000.00	7	Investigate landowner buy in. Small cost, good value for money.
51	Long Walk restoration	5	5	3	3	3	5	24	5	£18,000.00	8	Low risk, longterm viability. Would need to see plan for increasing visitor numbers.
23, 36, 38, 46	Farmland habitats project	5	5	5	1	5	3	24	1		4	Funding PO to advise landowners. A lot could be done through existing grant schemes. Could be added to existing project to speak with landowners - SWT?
55	Staffordshire Parks & Gardens training	5	5	5	3	3	3	24	3	£40,000.00	6	Project about information rather than physical mitigation. Would want a reduced cost to cover only projects within project area. Query longterm viability due to no dedicated project staff
30	Ingestre Orangery Apple Store	5	3	3	5	3	3	22	3	£380,000.00	10	A lot of money for something that is specialist. Needs feasibility study to show what the space can be used for.
22	Wolseley-Colwich Circular walk	5	3	3	3	5	3	22	5	£10,000.00	7	Interaction with Bill Limits - query.
40, 41, 10	Minor access improvements	5	3	3	3	5	3	22	1		7	Quick improvements to public access - value for money. Potential links with other projects.
17	Ingestre Golf Course (North)	5	5	3	3	3	1	20	1	£180,000.00	6	Concerns over landownership current insurmountable.
14, 18	Coalpit Lane	5	1	3	3	3	5	20	1	£20,000.00	5	Using historic routes , but far from HS2 scheme. Risk to SAC from higher footfall?
26, 28	Tixall Icehouse and geophys	5	3	3	3	5	1	20	3	£10,000.00	5	Small budget, likely suitable for Small Projects group. Volunteer involvement. Not sure of landowner permission yet? Check consent and viability.

Appendix D  
Scoring of Stage 1 applications

Trent-Sow Parklands and Cannock Chase AONB HS2 Group - Environment Enhancement Plan  
March 2021

\	Project name	Fits with the DP & Project Vision	Helps to integrate the HS2 Scheme	Complies with published objectives	Benefits groups	Offers value for money	Is viable long-term	Total	Is deliverable	Approx. cost	Delivers a range of benefits*	Comments
43	Ingestre Park Walk	5	5	3	3	1	3	20	1	£1,000,000.00	7	Fits well with vision but difficult to score as need to break down what project would actually entail. Landowner permission required so high risk. Will it be PRoW or permissive access?
44	Colwich-Weston Cycle Path	5	5	3	3	1	3	20	1	£1,000,000.00	7	Would need to be led by Highways Agency, not currently on board. Large risk and high cost but would provide many benefits.
47	Nesting birds project	5	3	3	1	5	3	20	5	£1,000.00		Strong project offering good value for money. No clear project lead. Could be linked to larger Washlands project?
29	Birchall Farm to County Showground	5	3	3	1	3	3	18	1	£250,000.00	4	Promoting routes that have been severed, links to Ingestre footpaths project, but unlikely to fund both. Low value for money, high risk as don't have landowner consent.
12	Land Exchange - heathland restoration	1	1	5	5	3	1	16	3	£20,000.00	15	Outside of project area. Does not integrate HS2. Many benefits but only if project goes ahead (this is only feasibility study). Feasibility study could be linked into Woodpasture project.
20	AONB Arts	3	1	3	3	3	3	16	3	£40,000.00	7	Will bring positive benefits to many people. Already an HLF arts project.
19	Conservation Area Mgt Plans	3	1	3	3	1	3	14	3	£180,000.00	5	Low value for money - not identifying enhancements, more identifying constraints on planning?
15	Hixon Airfield control tower	1	1	1	1	5	1	10	1	£0.00	3	No request for funding and outside project area. Would be good for HE to list buildings and recognise in Local Plan, but no project in form.
35	Rev. Petit's tours	1	1	1	1	1	3	8	5	£10,400.00	3	Interpretation on Rev Petit could be included as part of wider interpretation. Application focuses on re-publishing book, doesn't integrate the HS2 scheme. Tour could be promoted through interpretation for other projects?
39	Ingestre Bridleways		5	5	3	3	3	19	1			High risk as no project delivery partner. Project overlaps largely with other Ingestre proposals.
56	The Ingestre Flip-book							0	1			Ineligible - within Bill Limits
58	Ingestre Hall Changing Landscapes	5	3	3	1	3	3	18	5	£42,305.00		Late submission at Stage 2. Good community benefits, engaging people with the landscape. Bringing in arts element. Good value for money.

Appendix D  
Scoring of Stage 1 applications

Trent-Sow Parklands and Cannock Chase AONB HS2 Group - Environment Enhancement Plan  
March 2021

\	Project name	Fits with the DP & Project Vision	Helps to integrate the HS2 Scheme	Complies with published objectives	Benefits groups	Offers value for money	Is viable long-term	Total		Is deliverable	Approx. cost	Delivers a range of benefits*	Comments
48	Valley Views												
11	Ingestre Park Reinstatement												Very high risk - relies entirely on the support of land owner who is not known and wont be known at the time of submission. Likely that a golf course will still be present on land to be restored.
25	Tixall Churchyard improvements												
33	Shugborough ice house												
49	Photography project												
50	Chapel of Ease												
52	Green energy for Ingestre Orangery												
13	Chase Through Time legacy projects												
54	Shirleywich Farm canal spur												
8	Public Park creation												
21	Coalwich Brickworks heritage and habitat												
34	Millenium Avenue Restoration												Included in the DP
5	SW Canal habitat creation												
16	Ingestre-Tixall-Shugborough link												
27	Access for all												
42	Colwich to Stafford Cycle path												Project 7 covers a smaller portion of this due to feasibility
31	Ingestre Church organ												Apply for Communities Fund
32	Tixall Phonebox Defibrillator												Apply for Communities Fund
6	SW Canal habitat creation												
9	Hoo Mill Lock												Adjoining Bill Limits so more detail required
24	Pasturefields Salt Marsh SSSI												Link to existing HS2 mitigation?
29	19th century Trent River bridge												Ownership disputed so permission for works not possible
53	Sensory garden at Ingestre Orangery												
57	Farley Corner future use												Inside Bill Limits so not eligible

\*Reviewed against benefits list included in Stage 1 proforma



## Appendix E

### Stage 2 Proforma template

STAGE 2: ASSESSMENT OF INITIAL SHORTLISTED PROJECTS	
<b>The following information is required to assess projects for funding by the Trent-Sow Environmental Enhancement Project Fund:</b>	
<b>PROJECT NEED</b>	<p>Provide justification of the need for the project. Why it is important that the project happens?</p> <p>Please provide updated map of project area, location if different to one already provided at Stage 1.</p>
<b>METHOD</b>	<p>Provide information on how the project will be managed in practice</p> <p>Think about:</p> <ul style="list-style-type: none"><li>■ Who</li><li>■ How</li><li>■ Timeline</li></ul> <p>Consider preparatory work, delivery on the ground, and long term management.</p>
<b>BUDGET</b>	<p>Provide a simple breakdown of the budget. It might be helpful to think about budget under the following headings but these may not all be relevant for a small project.</p>

**Appendix E**  
**Stage 2 Proforma template**

Trent-Sow Parklands and Cannock Chase AONB HS2 Group - Environment Enhancement Plan  
 March 2021

STAGE 2: ASSESSMENT OF INITIAL SHORTLISTED PROJECTS	
	<ul style="list-style-type: none"> <li>■ Development work</li> <li>■ Capital costs</li> <li>■ Ongoing management costs</li> <li>■ Match finding (if applicable-not a requirement)</li> </ul> <p>If relevant, include status of any secured funding, timescale for funding of on-going management costs.</p>
<b>SCHEDULE OF CONSENTS &amp; PERMISSIONS</b>	<p>Where relevant, please attach written evidence of:</p> <ul style="list-style-type: none"> <li>■ Consents</li> <li>■ Permissions</li> <li>■ Landowner agreements</li> <li>■ Other statutory/legal requirements</li> </ul>
<b>KEY PARTNERS</b>	<p>Are any other organisations going to be involved in delivering or taking part in the project? If so please state who and what their role will be.</p>
<b>OUTCOMES</b>	<p>Provide clear outcomes for your project:</p> <ul style="list-style-type: none"> <li>■</li> <li>■</li> <li>■</li> </ul>

STAGE 2: ASSESSMENT OF INITIAL SHORTLISTED PROJECTS	
<b>KEY STATISTICS</b>	<p>Where applicable please state how your project contribute to meeting these key statistics:</p> <ul style="list-style-type: none"> <li>■ Staff involved in delivery (no.)</li> <li>■ Volunteers involved (no.)</li> <li>■ Estimated people benefitting/ engaged per year (no)</li> <li>■ Amount of habitat created (ha)</li> <li>■ Trees planted (no)</li> <li>■ Length of access improvements (m)</li> <li>■ Historic features (buildings/structures) restored (no)</li> <li>■ Area of historic landscape / features restored (m2)</li> </ul>
<b>HS2 GREEN INFRASTRUCTURE BENEFITS</b>	<p>What benefits does this project provide?</p> <p>Please tick relevant HS2 Green Infrastructure benefits:</p> <ul style="list-style-type: none"> <li>• Ecological benefits</li> <li>• Landscape and visual benefits</li> <li>• Heritage benefits</li> <li>• Access and community space benefits</li> <li>• Drainage and flood amelioration</li> </ul>
<b>LONG TERM MANAGEMENT &amp; SUSTAINABILITY</b>	<p>How will you ensure that the benefits of your projects are secured in the long term? If it is a research project how will the information be shared? If you are making physical improvements how will they be maintained?</p>

## **Appendix F**

### **Minutes from the Stage 2 EEP presentation 03.11.20**

**Tuesday 3rd November 2020**

#### **Microsoft Teams Meeting**

##### **Attendees:**

Sam Caraway - Project Manager

Rosslyn Stuart – Chair

Verity Roberts - LUC

Kate Ahern - LUC

Hazel McDowell – Natural England

Chris Lambart – NT

John Harris – CRT

David Cadman - SWT

Chris Welch – HE

Kate Dewey – SWT

Felix Pepler – SMBC

Julia Banbury – CC AONB

Carol Sutton – HS2

Marianne Bowtell – HS2

David Green – HS2  
Kate Anderson – HS2  
Philip Sharpe – IWA  
Sue Lawley, SCC  
Peter Attwell – HS2  
Madeleine Achurch – HS2

**Presenters:**

Anna Nixon, SWT  
Nicola Lewis-Smith, CRT  
Lara Rowe, Friends of Ingestre Orangery  
Paul Roberts, NT  
Felix Pepler, SMBC  
Sam Caraway – Smaller Projects

The Chair welcomed everyone to the meeting. It was confirmed that the meeting would be recorded and there were no objections received.

**Item 1: Apologies, Introductions and Declarations of Interest:**

- Members introduced themselves to the meeting
- Declarations of Interest: RS confirmed that it is assumed that representatives will not be voting on projects proposed by their own organisation
- RS confirmed that the purpose of the meeting was to agree the Environmental Enhancement Plan and that the group was in a very positive place, with a healthy number of

**Appendix F**

Minutes from the Stage 2 EEP presentation 03.11.20

Trent-Sow Parklands and Cannock Chase AONB HS2 Group - Environment Enhancement Plan  
March 2021

projects being proposed. It also gave an opportunity to scrutinise the projects and to de-risk and where possible identify synergies for projects that exist

**Item 2: Outline of Meeting Structure, Review of Work to date and Introduction to the Environmental Enhancement Plan**

- SC outlined the meeting structure and confirmed that questions raised, together with responses received, had been circulated to the group prior to the meeting. He added that following the presentations and after questions the project presenters would leave the meeting in order that the group can discuss the project. When voting members should consider (i) are they happy to include the project in the EP and (ii) are there any provisos that should be attached to the project
- KAh presented the process that had been completed in arriving at the EEP -
  - Shortlist of 24 projects
  - Stage 1 applications – prioritisation criteria
  - Stage 2 application – more detailed stage, criteria/proforma and risk assessment
  - Review and agree Enhancement Plan Projects – for consideration at the meeting today
- KAh reported that the projects being considered were ready to go and can be delivered on the ground and there are a total of 7 projects, submitted by 6 organisations for consideration today
- A map of the area was presented which indicated that there is a gap on the eastern side, but otherwise there is a good spread
- Project Themes: 4 primary and 2 secondary themes
- The project benefits for each project were reported to the Group



## Appendix F

Minutes from the Stage 2 EEP presentation 03.11.20

Trent-Sow Parklands and Cannock Chase AONB HS2 Group - Environment Enhancement Plan  
March 2021

### Item 3: Project Presentations and Questions and Funding Decision for each project

#### 3.1 Trent Sow Washlands – Presented by Anna Nixon, SWT

£422,000 funding request, with £100k match funding

AN presented the Trent Sow Washlands project and reported that:

- The project would work with local landowners to restore wet grassland and riparian habitats along the Trent Sow river corridor. It would provide regional habitat connectivity complementing existing SWT project on Staffordshire's rivers and HS2's mitigation in bill limits.
- Communities: It would provide a lasting legacy and would be accessed by people in the local settlements
- Landscape: Conserve and restore the floodplain landscape
- Historic Environment: Conserve and restore
- Ecology & Hydrology: Restore habitats

#### The following questions were raised:

*LUC – Are you confident the currently unsecured match funding will be secured and what would be the impact if the funding is not secured?*

- o SWT Response: DC confirmed that they were confident in attracting the match funding and there were ongoing discussions with the Borough Council and EA and were looking at environment land management schemes. If the funding was not received, they would scale back the amount of activity

*LUC – How will the legacy of the project continue and what opportunities are there for finding further funding through landowner liaison as part of the project?*

- o SWT Response: It was confirmed that the project has a legacy and there is a desire to upgrade and skill people on what flood plans are and what they are used for

*LUC – How could you secure landowner buy-in for longer terms management?*

- o SWT Response: DC confirmed that it was a priority to secure long-term land management and was working with colleagues in Natural England to secure agri-environment funding for landowners to carryout ongoing management.

*HE – Had previously questioned how potential impacts relating to the earthworks of ancient flood meadows would be assessed and avoided. They were confident the proposed working practices would avoid harms but wondered is there a possibility through this project to enhance the previous local research in this area by using recent Lidar data, leading to better understanding and preservation of the historic floodplain infrastructure?*

- o SWT Response: DC said that this was an excellent idea and SWT would need to arrange to meet with the Council and HE to further develop. SC advised that there was an additional £6k in the fund to enable the trust to appoint a specialist to look at this area.

- o SL said that SCC would be happy to work with the trust and NT to develop this

*HM, NE – How would the project monitor success?*

- o SWT Response: It was confirmed that there are specific habitat restoration targets and SWT would look to bespoke with site by site monitoring

*KD, SWT – Has enhanced public access to Pasturefield Nature Reserve been considered, which is owned by SWT?*

- o SWT Response: DC confirmed that this would be looked at later down the line.

*JB, CC AONB – Would there be any wet-woodland creation on the flood plain and could there be enhancement of views across the valley to the viaduct (as set out in the group's design principles)?*

- o SWT Response: It was confirmed that these may well be an opportunity and will look at this further and bear it in mind.

*FP, SMBC – With regard to access and connectivity has consideration been given for local people to access the sites and felt that it should be a feature?*

- o SWT Response: It was confirmed that this could be looked at

*DG, HS2 – On the legacy side, how would this be sustained on third party land and what mechanisms would be put in place to keep this sustained?*

- o SWT Response: DC said that this would be around the Environment Land Management Scheme or funding sources resulting from the Environment Bill in respect of net gains.

[AN and DC left the meeting]

**Decision:**

- RS asked members whether they were persuaded on legacy
  - SC responded that it would their own land, or land belonging to Stafford Borough and/or National Trust, so the land would continue to be managed
  - DG said that this is part of nature recovery networks, which is supported by HS2
  - KD said that if there is an agreement to work with the landowner, the landowners are generally very supportive and on board. They should be prescriptive about the monitoring and monitoring schedule and the way that it can be reported back would help with the legacy element
- RS asked members if there were concerns in relation to the unsecured match funding
- KAh said that she felt reasonably comfortable as they have done this type of work before and the project will pick up interest from other parties/local needs. In relation to the Historic Water Meadows, £6k was an appropriate amount to get some to look at it
- The project was approved with the following provisos:
  - £6k additional funding to commission research into Historic Water Meadows: enhancing existing with LIDAR, if possible, research to be used identify other potential works to inform the delivery of the project. (Working with HE and SCC to inform this work).
  - A robust monitoring scheme to be prepared.

**3.2 Connecting Towpath – Presented by Nicola Lewis-Smith, CRT**

£595k funding request, with £118 k match funding

NLS presented the Connecting Towpath project and reported that:

- There would be 3 phases for the towpath improvements, each phase being a separate project

**Appendix F**

Minutes from the Stage 2 EEP presentation 03.11.20

Trent-Sow Parklands and Cannock Chase AONB HS2 Group - Environment Enhancement Plan  
March 2021

- Phase 1: 600m Shugborough to Haywood Junction, £171k;
- Phase 2: Haywood Junction to Bridge 105 Milford Bridge, £713k; and
- Phase 3: Bridge 105 Milford Bridge to Baswich Land Stafford, £unknown

- The project being considered today was for Phase 2 with a grant request of £595k

**The following questions were raised:**

*LUC – The costs per M seem high for the specification you are using, it would be helpful if you could explain how you arrived at the costings for the project and how you will ensure value for money?*

- o CRT Response: The area we are working in is restricted and needs to have multiple compound sites, there is fibre optic cabling under the path, access is via hump back bridges requiring floating plant, there may be remedial wash wall repairs required and the movement of small amounts of materials along the tow path is time consuming

*SC – What tendering process will be used?*

- o CRT Response: Open tender process to test the market and will work with SCC, the local authority and their framework contractors. If there are cost savings, these would be reinvested and would provide additional funding opportunities

*LUC – How confident are you that you will achieve funding for Phase 3?*

- o CRT Response: As each phase is completed, it would build momentum and by doing each phase, this will provide evidence to support the next phase. CRT would be in a strong position if they achieve funding for Phase 1 and Phase 2.

*KD, SWT – There is a lot of soil being removed, where would it go?*

- o CRT Response: We are not moving a lot of the material and would look to retain material on site

*DG, HS2 - £106k is coming via a Select Committee decision/contribution and there is a reliance on match funding. Where is the additional funding coming from?*

- o CRT Response: The funding will come from the Trust and we will look at opportunities in the contract and would need to discuss these with contractors.

SC said that the funding was dependant on completion of Phase 2 and are HS2 confident that this would then release the £106k funding.?

o DG responded that these are 2 separate matters and that HS2 are providing the entirety of the funds. CRT added that this should be looked at as a larger project, Phase 2 is HS2 heavy, but part of this phased approach.

[NLS left the meeting]

#### Decision:

- RS commented that these were significant funds, but that the project does provide connectivity. HS2 monies are a component part and other elements of the towpath were being funded by other resources
- RS asked members if they had any significant concerns:
  - DG felt that this is a very important project and would provide multiple benefits and would be a pivotal part of infrastructure that should be delivered and was important for the communities. He added that HS2 would like to see more contribution from other funders or CRT themselves.
  - PS commented that Phase 2 against Phase 3, with Phase 2 having the worst conditions and was the obvious place to start
  - JB said that for the soil and ground modelling, there would need to be careful treatment of the towpaths that were lower than the canal, to avoid harms to trees along the route and negative landscape impacts. Also for this level of funding the AONB would like to see potential other benefits and biodiversity and landscape enhancements coming out of the project
  - KD there will be some, admittedly minor, loss of biodiversity through this project, by replacing mud & grass verges with stone, damage to vegetation etc. We should except this project to carryout some habitat improvements to mitigate this, and adopt the principle of no-net-loss for this project.

## Appendix F

Minutes from the Stage 2 EEP presentation 03.11.20

Trent-Sow Parklands and Cannock Chase AONB HS2 Group - Environment Enhancement Plan  
March 2021

- SC added a general comment that the team at Shugborough were looking to stop vehicle use and open up a cycle way to the public, providing a cycle path and route around Phase 1 and Phase 2
- KAH the path will be quite narrow their could be potential for user conflict along it; bikes, walkers, fishers, narrow boat users.
- The project was approved with the following provisos:
  - User Conflict Management Plan should be drawn up an inform project design.
  - There should be a robust competitive tender process to ensure value for money. If there are any cost savings, these should be used in relation to biodiversity, landscape enhancements, and improving the condition or setting of heritage assets along the route.
  - A Habitat and Landscape Management Plan should accompany the planned tow path improvements this should:
    - Seek to minimise negative landscape and habitat impacts of the improvements to the tow path.
    - Identify habitat and landscape enhancements along the route, as minimum committing to no-net-loss of biodiversity resulting from the project but ideally to delivering gains.

### 3.3 Ingestre Orangery Garden – Presented by Lara Rowe, Friends of Ingestre Orangery

£71,760 funding request, with £1,750 match funding

LR presented the Ingestre Orangery Garden project and reported that:

- The project had been built around and based on feedback
- It would provide access to outside space and would be distinct from the Orangery Project
- Communities would benefit as it would provide a tranquil and accessible place, which would also have health and wellbeing benefits

- Access, enjoyment, connectivity resulting in increased enjoyment and dwell time
- Landscape
- Historic Environment
- Ecology
- Management & Maintenance Plan: They have consulted with Stafford Borough Council's conservation office and the proposal includes a consultancy funding of £3k, although SBC and a Trustee would aid in this process in an advisory capacity.

#### The following questions were raised:

*LUC – Is the art commissions relevant and necessary and what experience do you have in commissioning artwork?*

- o Response: LR confirmed that this was based on her previous work experience and the artwork would be relevant to the natural and cultural element of the site and plays a considered role in raising visitors' expectations when entering the site. It would be a temporary structure. In addition LR confirmed that the contribution from 'The Friends' is secure and that the trust is in the process of applying for a grant uplift.

*KD, SWT - If the outdoor learning includes the whole grounds of the Hall, are you aware that the lawns there are very diverse in wildflowers and it would be great to potentially have these promoted to the public?*

- o Response: LR was not aware of this, but would look into this further

*CW, HE – Is planning permission needed?*

- o Response: The planning permission includes an outside seating place and we have spoken to SBC, whose only query raised was with regard to the sculpture, and they are happy as it is a temporary structure

*RS – The funding dimensions are separate from Ingestre, could this enhance the use?*

- o Response: LR said that interest from the Orangery would be of benefit and would have a direct link for income generation

## Appendix F

Minutes from the Stage 2 EEP presentation 03.11.20

Trent-Sow Parklands and Cannock Chase AONB HS2 Group - Environment Enhancement Plan  
March 2021

[LR and FP left the meeting]

### Decision:

- RS said that this had been developed around user feedback, but were there any concerns with regard to the artwork costing £13k being temporary.? KA said that she had been persuaded by the response to the question raised and it made sense.
- DG advised that HS2 has an Arts Strategy, which was a public policy and this could assist in providing additional funding. Action: DG to provide further information on the Arts Strategy and arrange further discussion with Trent Sow on this subject.
- HM – Confirmed she has no issues with the sculpture and felt that the costs were reasonable
- The project was approved with the following proviso:
  - £3k additional funding for the Garden Management and Maintenance Plan

### 3.4 Shugborough Wood Pasturescape – Presented by Paul Roberts, NT

£268,187 funding request, with £63,567 match funding

PR presented the Shugborough Wood Pasturescape project and reported that:

- Provides 40 ha of priority habitat creation
- Provides 220 ha of priority habitat connectivity
- Provides 48 ha of historic landscape enhancements
- Connecting Shugborough priority habitats to Brocton Coppice
- Enhances access and tranquillity of the landscape
- 3 Phases:
  - Phase 1 – Development Plan, (NE funded)
  - Phase 2 EEF Works, which is being considered today; and



■ Phase 3 – on-going management

- The EEF Works include stakeholder engagement, fell of conifers, replant of broadleaves, installation of grazing infrastructure, management of field layer and set up of ongoing funding

**The following questions were raised:**

*LUC – Will there be accessible land to the public and how will it be managed?*

- o NT Response: There will be the same level of access, with no restrictions and during Phase 3, the on-going management plan, would look to extend access where possible

*LUC – With the increase in grazing, would there be any conflicts?*

- o NT Response: The Trust has extensive experience of managing access for people on grazed sites and the major role of the PM will be stakeholder engagement to deal with any conflicts

*LUC – The NT Ranger time input is limited, is this potentially underestimated?*

- o NT Response: This will be further considered during the development of Phase 1. The numbers are based on 4 weeks at 1 hour each week.

*SC – If more of the Ranger's core time was used for management and support, would there be additional resource from the Trust? What are the long-term management requirements and how will these be funded?*

- o NT Response: There is flexibility with regard to how they work and PR can also provide support from his direct team and colleagues from other teams as necessary. The aim of the PM post would be to engage with the Trust and external partners and set up on going funding agreements

*CW, HE – There will be heritage issues on the Eastern Block, which are all recorded. It would be useful to review this closely to avoid any damage to any features and make improvements where possible.*

**Appendix F**

Minutes from the Stage 2 EEP presentation 03.11.20

Trent-Sow Parklands and Cannock Chase AONB HS2 Group - Environment Enhancement Plan  
March 2021

- o NT Response: The project will skirt around these areas and the development plan would draw these out. SC added that HE would be consulted on the draft Development Plan before implementation.

*JB, CC AONB – Confirmed support for the project and as there will be monitoring, lessons will come out this.*

- o HM, NE – Confirmed support for the project and that Forestry England and Historic England had been consulted and are part of the consultation group

[PR left the meeting]

**Decision:**

- RS said that the project has extensive reach, there will be stakeholder engagement and consultation and was comfortable with the response with regard to the Rangers time. The Development Plan will be funded by NE.
- The project was approved with the following provisos:
  - Continue to work with CC ANOB to monitoring beneficial landscape change, and make the most of the opportunity to use this project as a catalyst for wider change on the Chase.
  - Ensure the following organisations are consulted on the project development plan: HE, Forestry England, Natural England, SCC County Archaeologist and SWT

**3.5 Changing Landscape – Presented by Felix Pepler, SMBC**

£42,305 funding request, with £6k matched funding

FP presented the Changing Landscape project and reported that:

- Residential Arts Centre, which includes (i) Outdoor Learning Space (an inspiration hub/outdoor classroom), which can house two groups simultaneously, which would enhance the learning offer and provide space for residential groups and (ii) artists in residence programme

## Appendix F

Minutes from the Stage 2 EEP presentation 03.11.20

Trent-Sow Parklands and Cannock Chase AONB HS2 Group - Environment Enhancement Plan  
March 2021

### The following questions were raised:

*LUC – How does this differ from the work that the centre does already?*

- o SMBC Response: It will allow users to focus on aspects of the environment, which you don't see beyond the Hall. It would provide a connection to the wider landscape and area that they are in.

*LUC – How will the proposed activities connect young people with the landscape/heritage of the area?*

- o SMBC Response: It would provide the opportunity of walks, developing learning outcomes and increasing knowledge of the area

*LUC – How advanced are designs and costs for the outdoor learning centre?*

- o SC said that they were not that far advanced and that it should be noted that it is contingent on planning permission and that £10k additional funding had been added to the project

*CW, HE commented that this was a high end landscape and welcomes anything that spreads it out. An outdoor learning centre would need to be of a particular design and pre-application discussions should be held asap in order to get an indication from planning whether this would be an issue.*

- o FP said that they accepted the sensitivity and would ensure that it would 'fit' and be sensitive to the environment. SC said that he and FP had agreed to introduce planning consent as a gateway to funding that part of the project, further to up the budget of this item by £10k in case cost rose as a result of planning constraints. FP would look to get something in situ and would explore the use of a temporary structure. CL, NT said that in NT's experience, getting temporary structures with artists involvement had been successful and they could consider an architect design and FP said that would fit.

- o DG, HS2: HS2 has an Art Funding Strategy – he will review the policy. Action: DG

[FP left the meeting]

### Decision:

- RS said that the project had a lot of potential, but had clear challenges in relation to the historic environment.
- There are two parts to the proposals, (i) the outdoor classroom and (ii) Artists in Residence
- The first proposal in relation to the outdoor classroom was approved in principle, with the following provisos:
  - Funding for this element is conditional on securing planning permission (or at least positive preapplication discussions identifying a suitable site and design approach) before the funding agreement is signed. SMBC should engage SBC Conservation officers (and HE) as soon as possible to find a suitable approach. (An additional £10k is added to the budget to facilitate this item being built to a suitable standard).
  - If planning permission cannot be secured for a permanent facility a temporary facility could be considered.
- The second proposals in relation to the Artists in residence was approved

### 3.6 Smaller Projects – Revealing Tixall's Halls - Presented by Sam Caraway, PM

£18k funding request

SC presented the Revealing Tixall's Halls project and reported that:

- This project was originally proposed by Anne Andrews, who sadly passed away in the summer. Anne was very active and well respected in the local community and it is a testament to her that many people were keen the project continued. However it is less developed than other projects in the portfolio. The project will be directed by Shane Keller the county archaeologist, with the AONB acting as the fund holder, and elements of the project being delivered by the Staffordshire historic buildings trust. It consist of: community archeologically investigations of the remnants of Tixall halls and the hydraulic pump system feeding it water, adding doors to the underground pipe system and ice house to protect them the project is for £20k.

## Appendix F

Minutes from the Stage 2 EEP presentation 03.11.20

Trent-Sow Parklands and Cannock Chase AONB HS2 Group - Environment Enhancement Plan  
March 2021

### The following questions/comments were raised:

- CW, HE – The project is supported by HE and they will be exploring culverts, but they will need to take advice from SCC Archaeologists. This would be the third of the areas historic parklands that is being supported by the Group, which is appropriate as this was one of HE's key interests in the area.
- FP, SMBC – The project is supported by SMBC and said it should go ahead in Anne's name
- RS said that within the project there are 2 doors and could these be protected under historic assets? Action: CW to check the Galla Register.

### Decision:

- The project was approved

### 3.7 Smaller Projects - Shugborough Estate Gardens – Presented by Sam Caraway, PM

£17,930 funding request, with £16,047 match funding

SC presented the Shugborough Estate Gardens project and reported that:

- The project relates to the northern corner of the gardens, which have the most historic monuments and are the nearest area to HS2
- It is the boundary area and will re-establish the shrub walk, reduce negative views, open up views and improve the setting for the ancient monuments.
- DG, HS2 – HS2 will be focusing on mitigations and this project relates to enhancements and we should be clear with the terminology

### Decision:

- The project was approved including extra £3k requested for extending the works on the shrub walk.

### Item 4: Outstanding Environmental Enhancement Plan Items

- SC reported on the following matters:
  - Unallocated Funding
    - SC reported that there was £34k unallocated funding available
    - Total additional funding approved for the projects submitted today is: £22,500k
    - £12k funds remaining unallocated, which could be left as unaccounted for now and used should any of the existing projects
  - Wrap up from development phase: proposal to fund write up of Ingestre Walks project as a feasibility Study from the group's admin budget Costs £5k - £8k
    - Proposal Approved.
  - Projected impact photography proposal
    - Funding will be required for prior and desired state photographs, visualisations for land management projects within the EEP
    - An External Comms contract was discussed, to launch and publicise the EEP. DG, HS2 said there could be website publications which would be managed by CC ANOB. RS said that this could comprise of a touring exhibition of how it looks now, and progress that is made, such as a photo montage/visualisation
    - DG, HS2 – Felt that there is a lack of images of the railway and how it interfaces with the projects. Action: DG to check internally at HS2 to see if there are any images that could be used.
    - It was agreed that this would not be cheap to produced and agreed that it would be discussed at a future meeting to further develop. Action: SC to add to the next Group meetings agenda

## Appendix F

Minutes from the Stage 2 EEP presentation 03.11.20

Trent-Sow Parklands and Cannock Chase AONB HS2 Group - Environment Enhancement Plan  
March 2021

### Item 5: Outline of next steps on EPP:

- SC confirmed that LUC will prepare a draft of the Enhancement Plan and issue to SC for distribution to members of the Group. Action: LUC/SC
- Final copy should be completed by w/c 08.02.21
- June/July 21: Project delivery and organisations will be required to sign the funding agreements
- SC will distribute slides to the Group. Action: SC

The meeting closed at 1643 hrs.