

# Apples on the Chase



# Aims and Objectives of the Project

- Where are the trees located?
- How diverse are the apple varieties?
- Are there any unusual/rare varieties? Do we have any local cultivars?
- How old are the trees?
- Why are there apple trees on the Chase?

# Suggested Sources of Apple Trees

- Trees planted by soldiers in Great War
- Lord Lichfield had a tree planted in the centre of each hut after demolition to soften the look of the camps

# Locating and Recording Apple Trees

## FRUIT TREE RECORDING FORM

Date of Survey : 10<sup>th</sup> August 2021

Names of Surveyors:

Camp Surveyed:

Rugeley

Line Surveyed: 2

OS Coordinates at Start of Survey: SK 00054 17134

Direction of travel on first traverse: East

Tree Ref	Type of Fruit	Location				Approx. Height (M)	Tree Photo (Y/N)	Fruit on tree		Leaf Photo (Y/N)	No. of Apples Collected
		Sheet	E	N	Acc (M)			Dir	tree Photo (Y/N)		
1	Apple	SK	00076	17122	8	9	Y	E		Y	0
2	Pear	SK	00094	17142	4	9	Y	NW		Y	0
3	Apple	SK	00112	17145	4	9	Y	NE		Y	0
4	Apple	SK	00143	17134	2	6	Y	W		Y	0
5	Apple	SK	00148	17126	8	6	Y	W		Y	0
6	Apple	SK	00152	17134	4	5	Y	W		Y	0

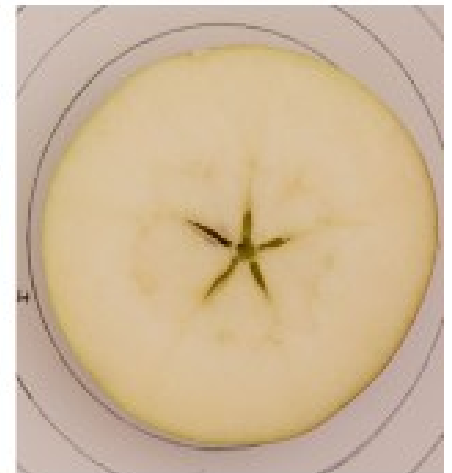
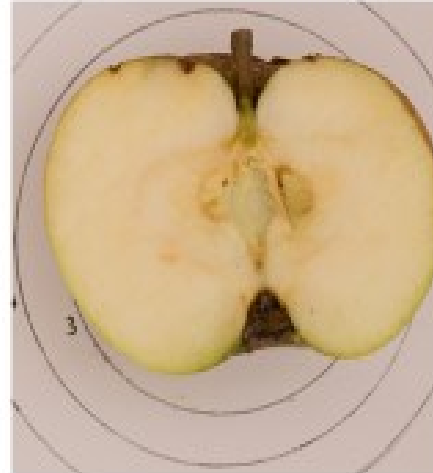
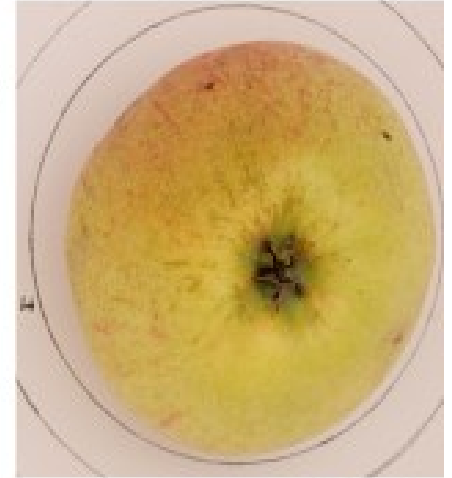
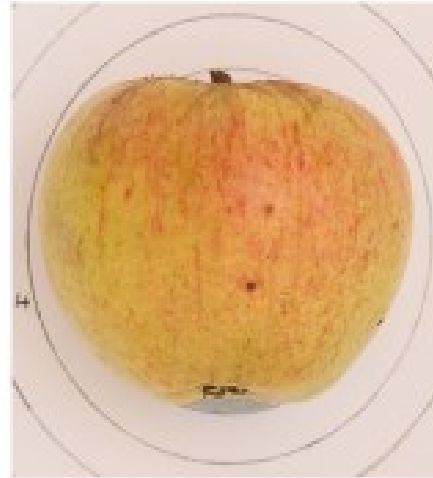
Notes No apple samples were taken as this was a trial exercise to test the validity of the method statement

# Photographic Records



Tree ID: Sample 02 D  
Location: SJ 97051 19147

Date Picked : 12/10/21  
Date Photographed : 17/10/21





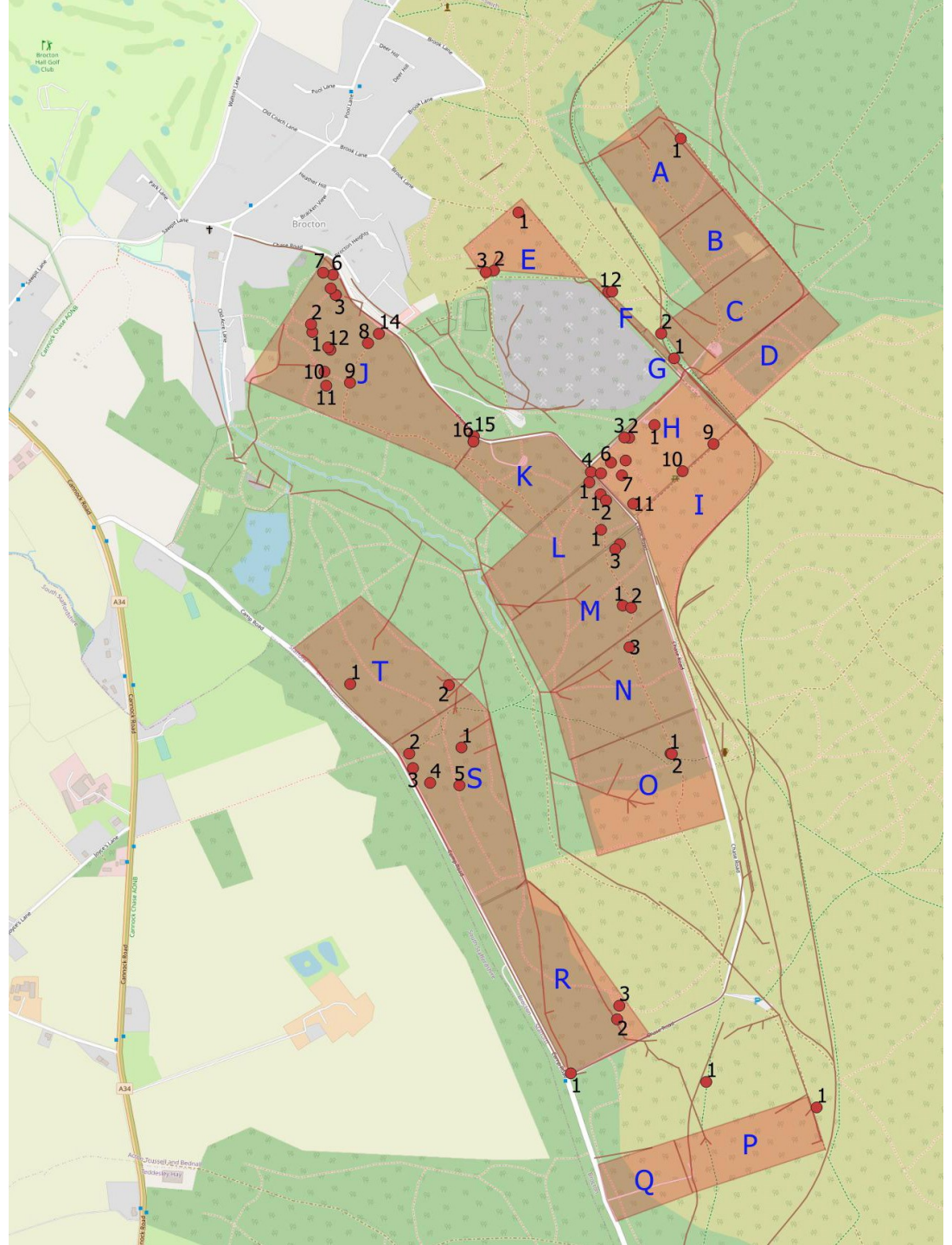
# Where are the trees located?

## Rugeley Camp



Where are  
the trees  
located?

Brocton Camp



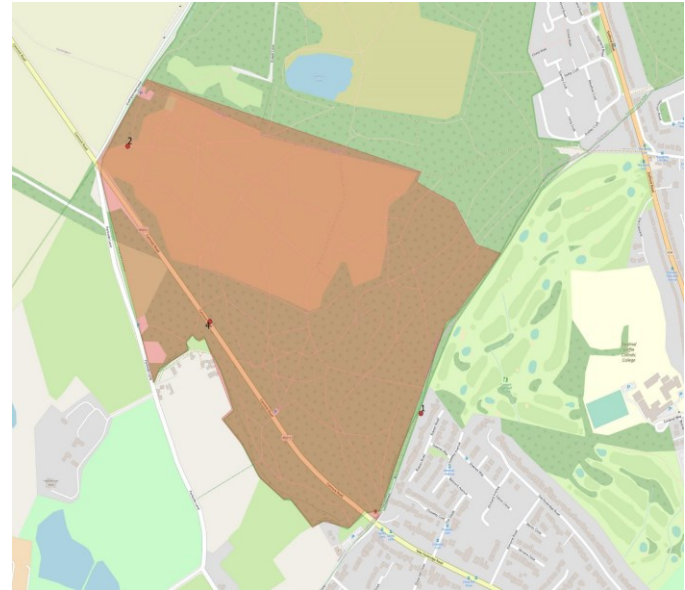


# Where are the trees located?

## Control Areas



Gentleshaw Common



Shoal Hill



Rifle Ranges F, G and H



# Where are the trees located?

## Relationship to Camp layouts

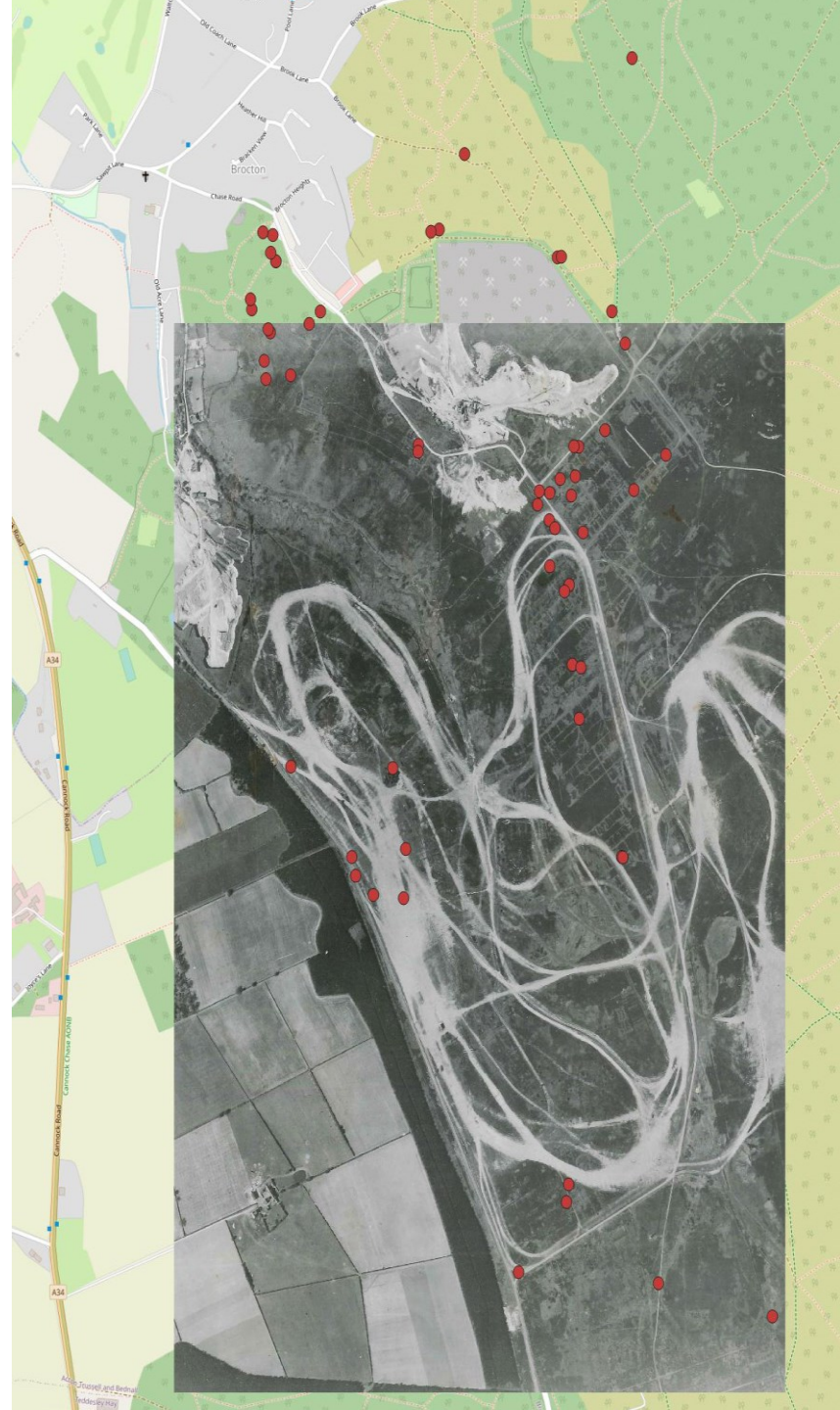
- Walked areas, but no obvious correlation
- Studied aerial photographs



12 Lines Rugeley Camp

# Where are the trees located?

Brocton Camp



# Varieties and Cultivars?

## DNA Analysis

Explorer P2P Apple v7.33 UK and Europe	106	112	0	0	88	115	0	0	117	125	0	0	11	122	0	0	178	191	0	0	136	160	0	0	147	148	0	0	131	152	0	0	173	0	0	0	228	230	0	0	215	233	0	0	250	256	0	0
A4916	106	112	0	0	88	115	0	0	117	125	0	0	11	122	0	0	178	191	0	0	136	160	0	0	147	148	0	0	131	152	0	0	173	0	0	0	228	230	0	0	215	233	0	0	250	256	0	0
A4917	112	114	0	0	88	96	0	0	115	129	0	0	11	116	0	0	178	204	0	0	136	170	0	0	147	150	0	0	139	152	0	0	173	216	0	0	254	0	0	0	213	225	0	0	232	244	0	0

Year	Sample Number	Org. Acronym	Org. Seq. No.	Site /Orchard Name	Cultivar known as (leave blank if unknown)	Result	Preliminary Finding
2021	A4916	CNCH	1	Cannock Chase 16269 R/L12/4	SJ99292	No match found	
2021	A4917	CNCH	2	Cannock Chase 16313 R/L12/7	SJ99326	No match found	

# Varieties and Cultivars?

## Brogdale Fruit Collection Apple identification

Four of the larger apples were sent for possible identification by experts by taste and appearance

Unfortunately no known varieties were identified



# Varieties and Cultivars?

FruitID web site

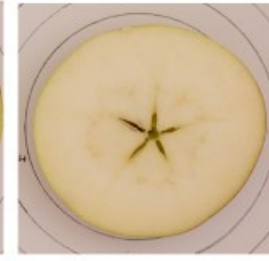
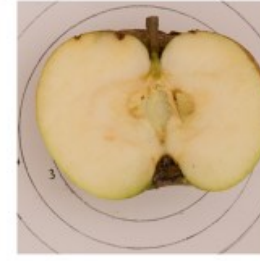
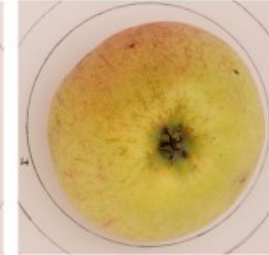
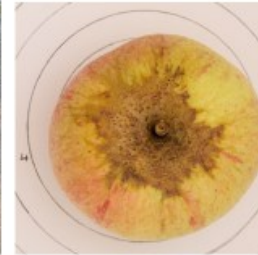


## Apples Project Record



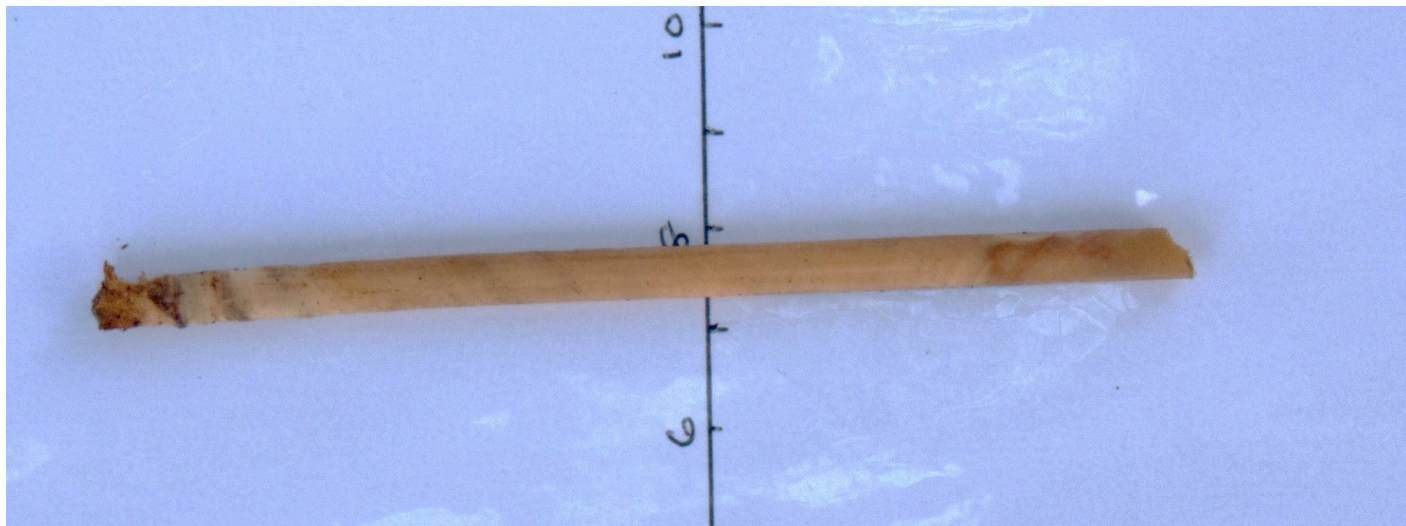
Tree ID: Sample 02 D  
Location: SJ 97051 19147

Date Picked : 12/10/21  
Date Photographed : 17/10/21



# How Old are the Trees?

## Tree Coring



# Why are there apple trees on the Chase?

- Planted by WW1 soldiers?
  - unlikely as at least some of trees not present in 1947 aerial photographs
- Planted by Lord Lichfield?
  - Unlikely as many of the trees found were not under huts

# Why are there apple trees on the Chase?

- Most likely source of trees?
  - Grown from seeds from discarded apple cores, probably when public access on the Chase increased



# Apples on the Chase

