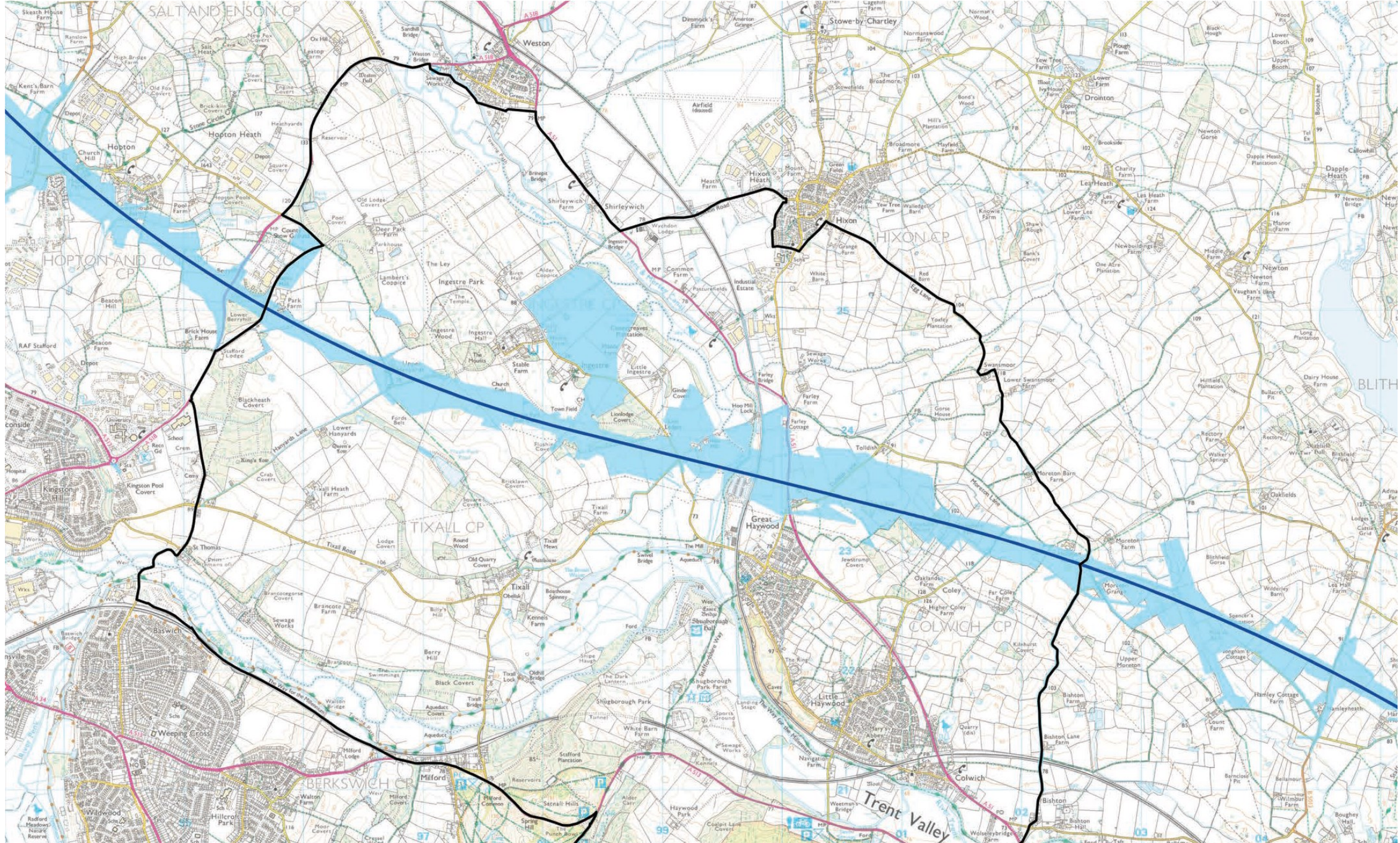
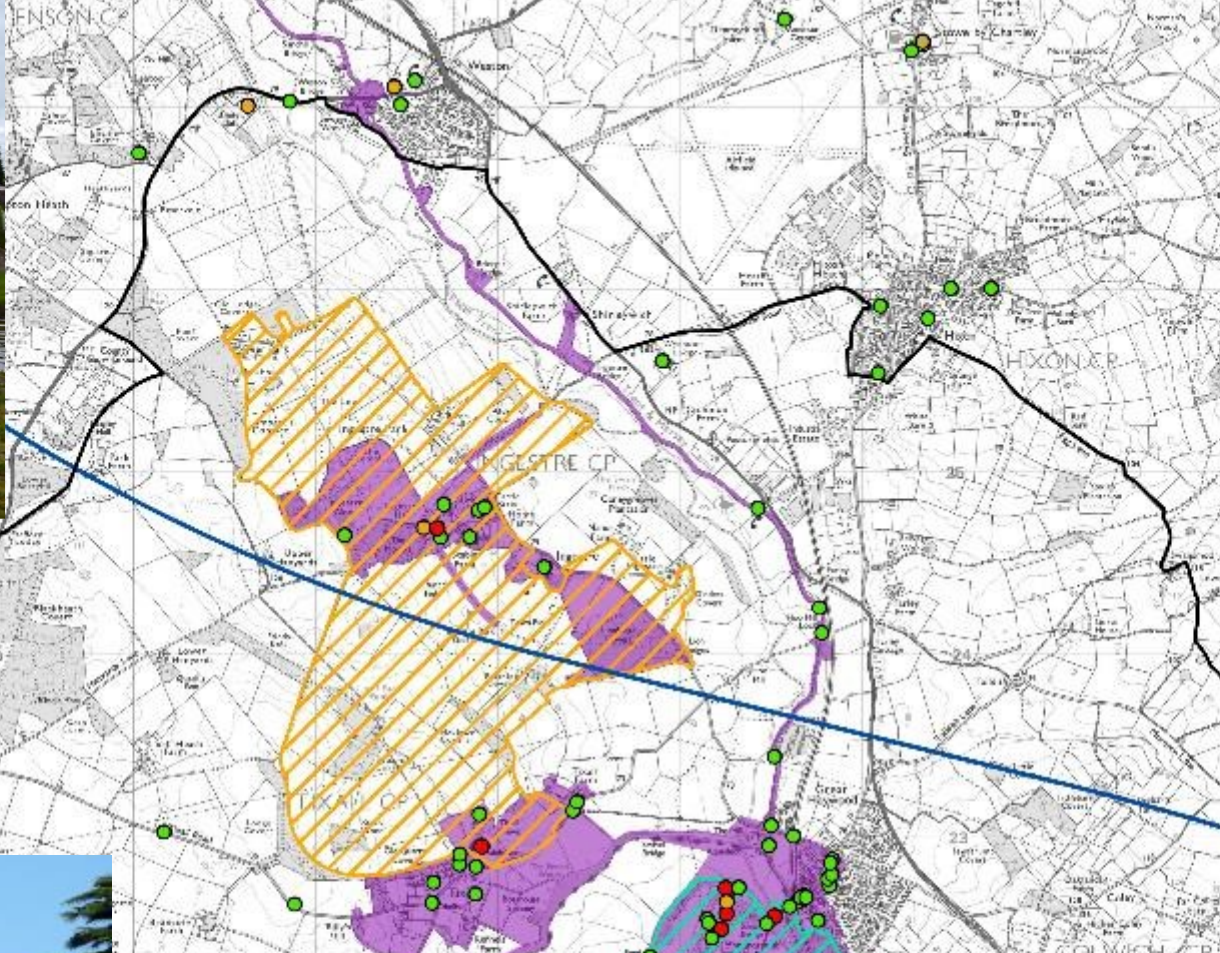











An aerial photograph of a vast, green landscape. The foreground and middle ground are dominated by rolling green fields, some of which are interspersed with clusters of trees. A winding road or path is visible, curving through the fields. In the distance, the landscape continues with more fields and a line of trees under a clear sky. The overall scene is peaceful and rural.

Cannock Chase
AONB Annual
Conference

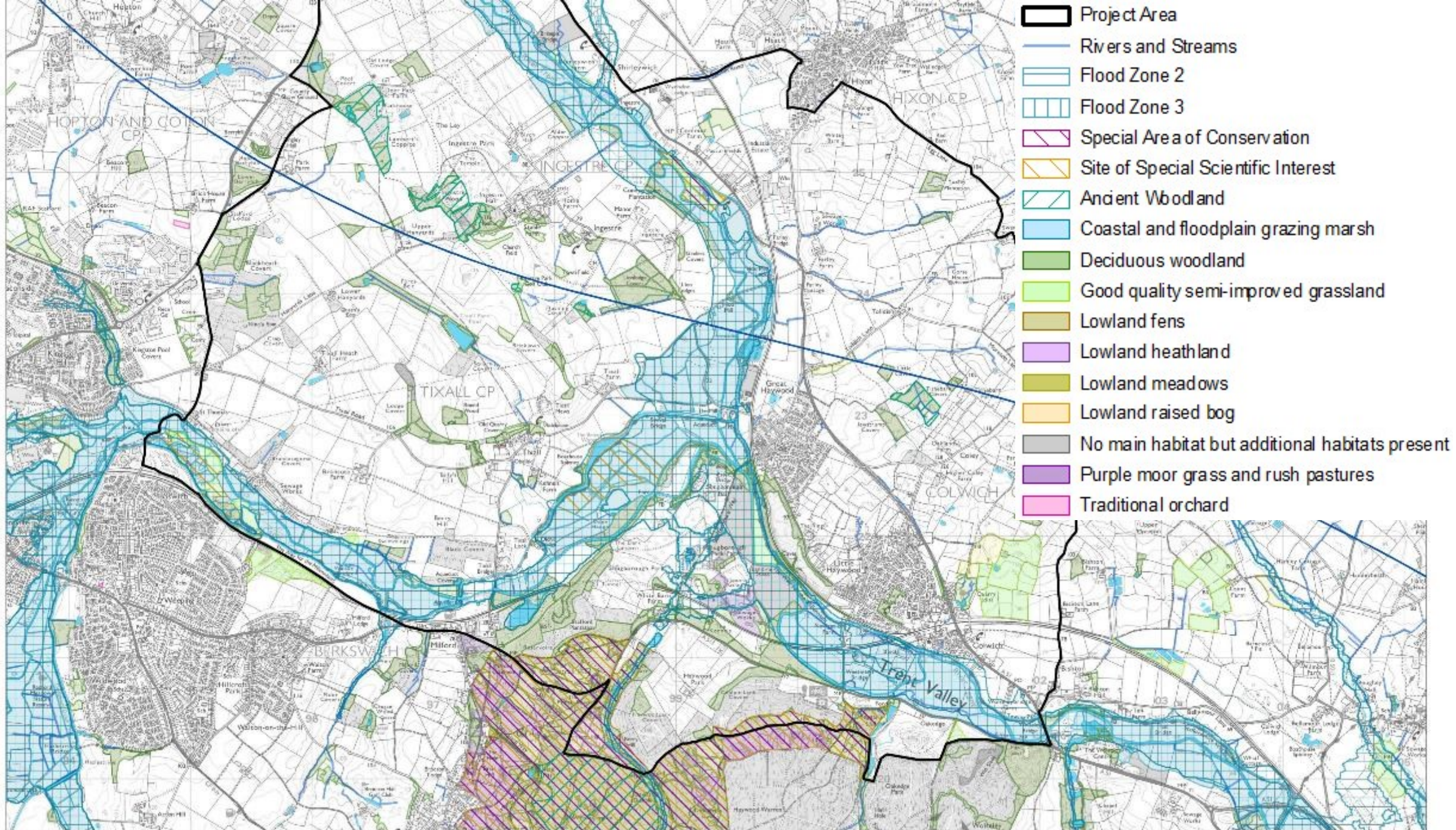
Trent Sow Parklands and
Cannock Chase AONB HS2
Group- Heritage





-  Project Area
-  HS2 Centre Line
-  Listed Building Grade I
-  Listed Building Grade II*
-  Listed Building Grade II
-  Scheduled Monument
-  Registered Park and Garden
-  Conservation Areas
-  Tixall and Ingestre Historic Parklands







The Group's Role

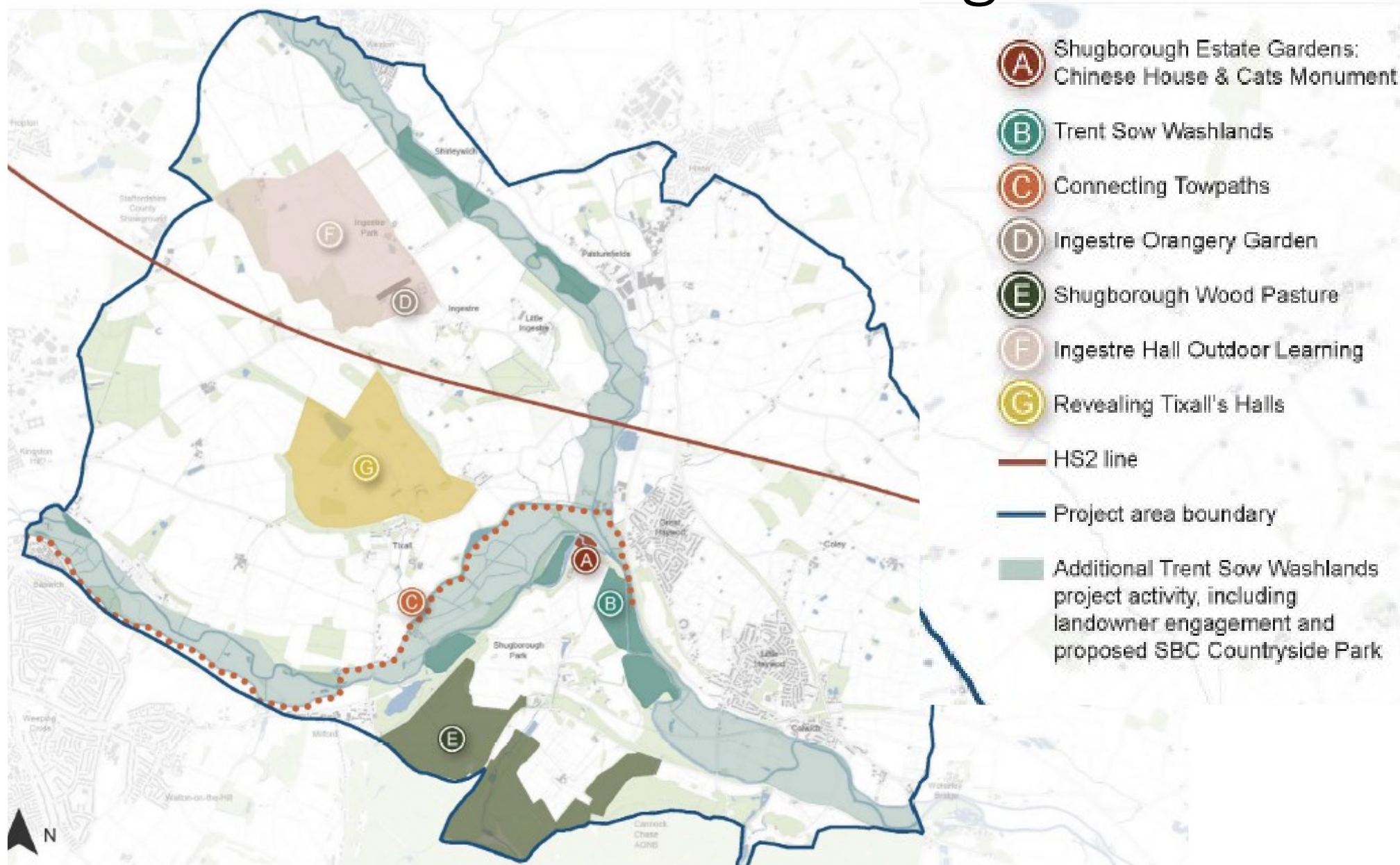
- **Design Principles**
- **Comment on Design**
- **£1.5 million Environmental Enhancement Programme**

Historic Environment: General Design Principles



- Consider and conserve the setting of natural and built features of historic interest.
- Interpret the historic pattern of ancient woodlands, parkland trees, wood pasture, tree groups and linear belts to inform appropriate locations for woodland creation to help integrate HS2.
- Use selective tree planting, consolidation and felling to filter views and emphasise positive historic views, allowing the significance of the asset to be appreciated.

Environmental Enhancement Programme





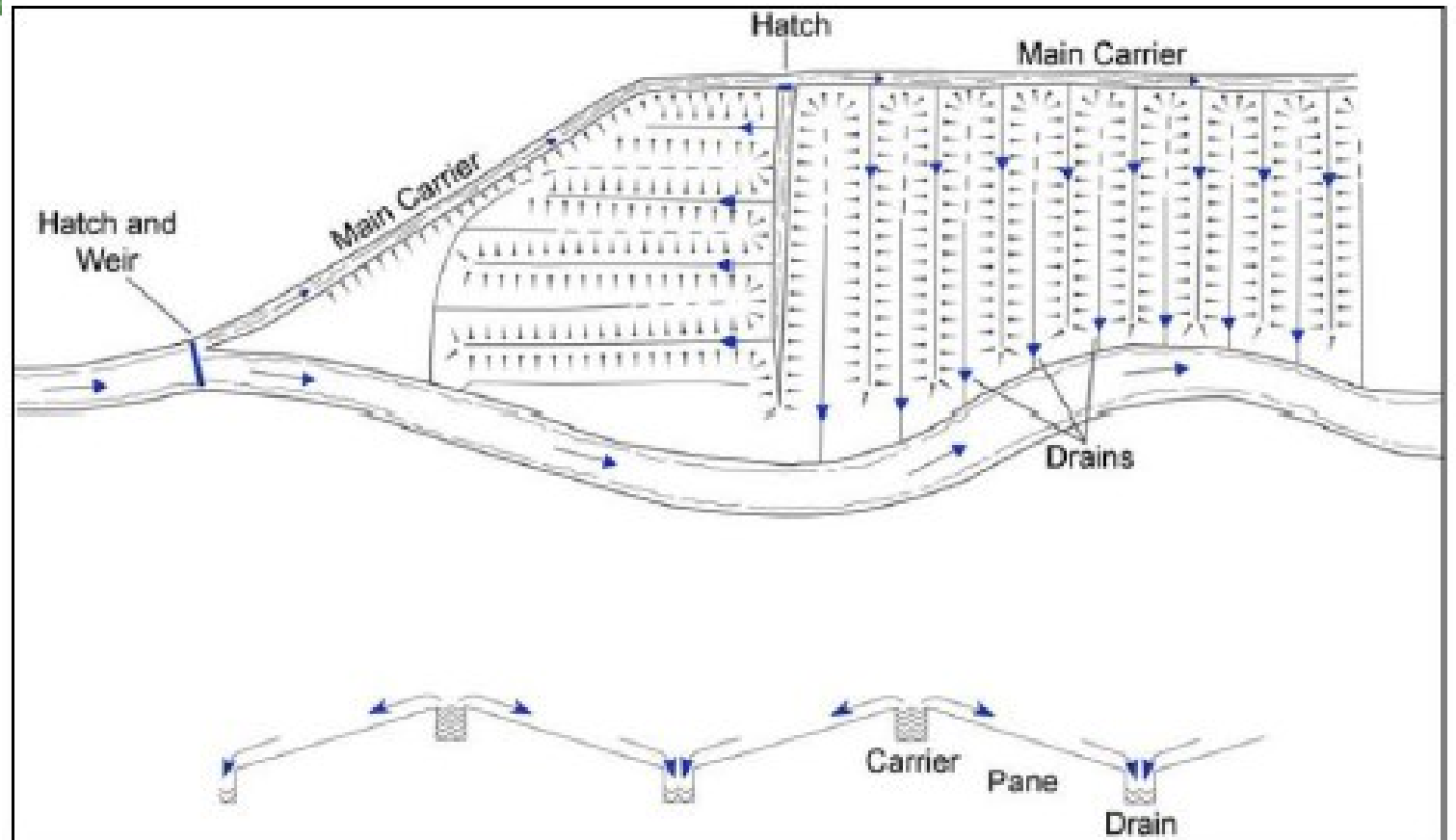
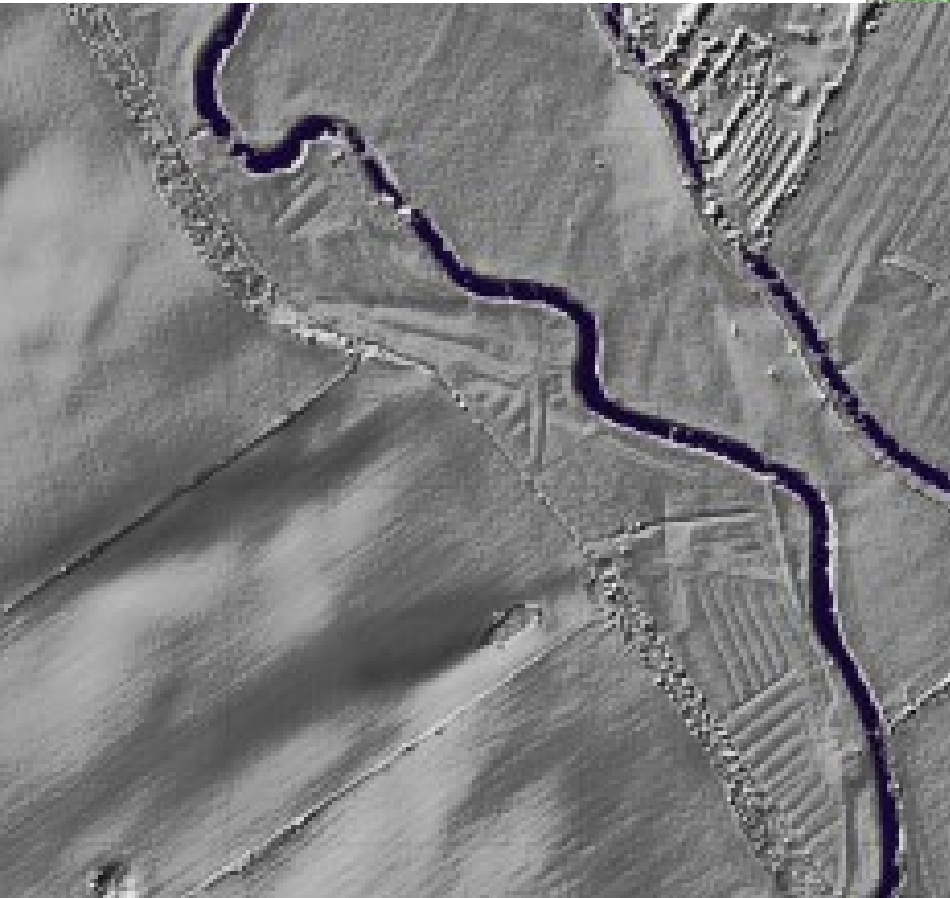
Ingestre Orangery Gardens



Halls



Trent Sow Washlands





**Shugborough Estate Gardens
Chinese House and Cats
Monument**





Lessons Learnt: Does this approach work?

- An engaged stakeholder group will exercise influence
- It is difficult to integrate the projects and the group's role influencing design
- (I think) we will achieve Design Improvements and Environmental Benefits that wouldn't be realised through existing mechanisms.
- Cherished heritage of the future?