



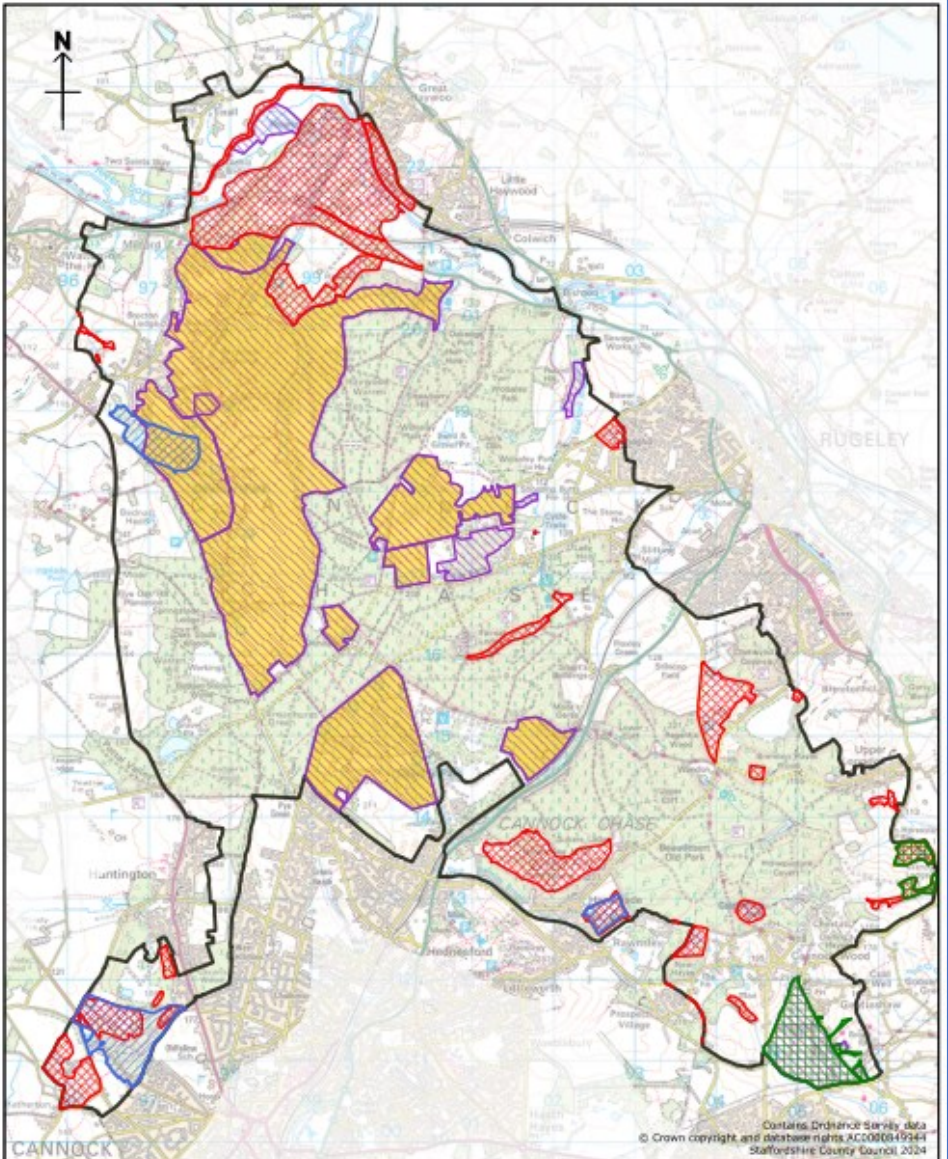
Recovering nature on Cannock Chase
and our contribution to 30by30

30by30 – what counts?

**Existing protected
areas**



**Areas with potential
for nature**



-  SBI
-  SSSI
-  SAC
-  Local Nature Reserve
-  Staffordshire Wildlife Trust

**Protected areas
for biodiversity**

Scale: 1:60000

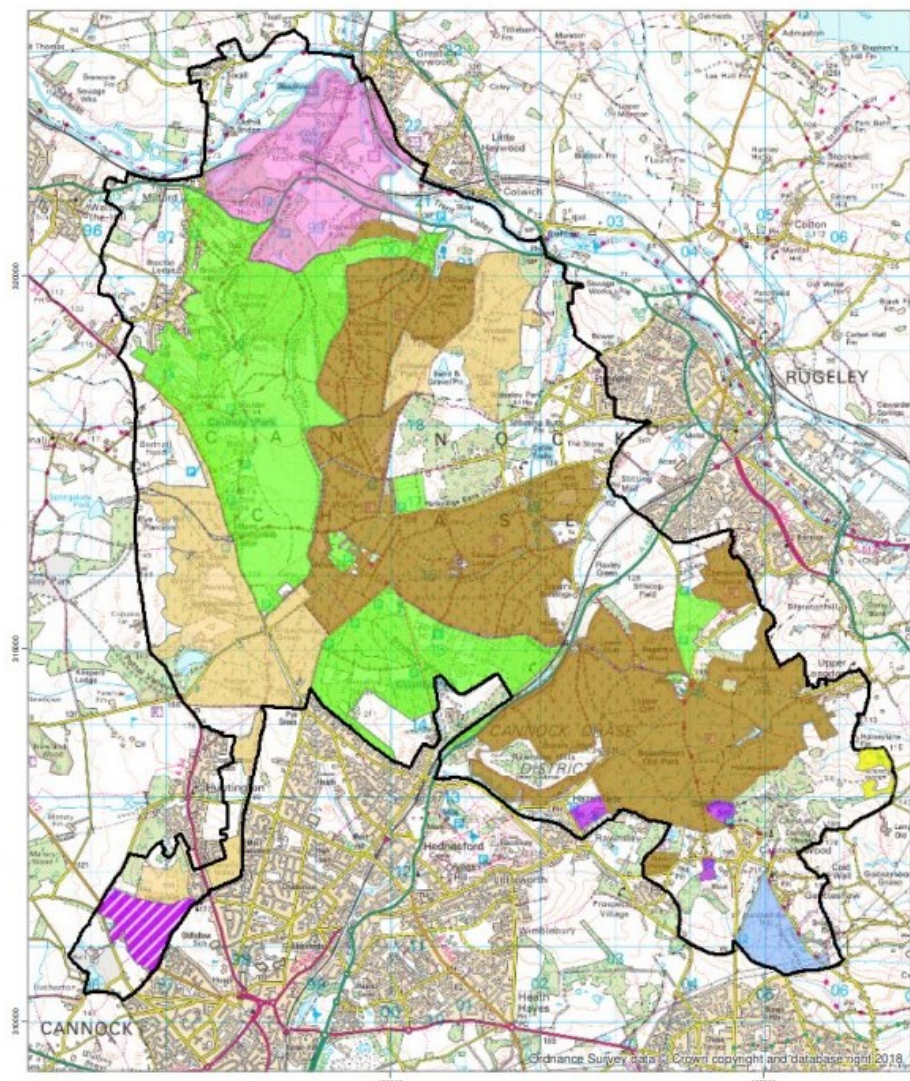
**Existing protected areas
Cover 2,106 hectares
(31% of the National
Landscape)**

**88.7% in public/charitable
ownership**



Areas with potential for nature

- Quarries – areas to be restored/managed for nature (253 hectares)
 - Cannock Chase Forest – areas being managed for nature conservation (913 hectares)
- = 1,166 hectares (17%)



Other land in public ownership

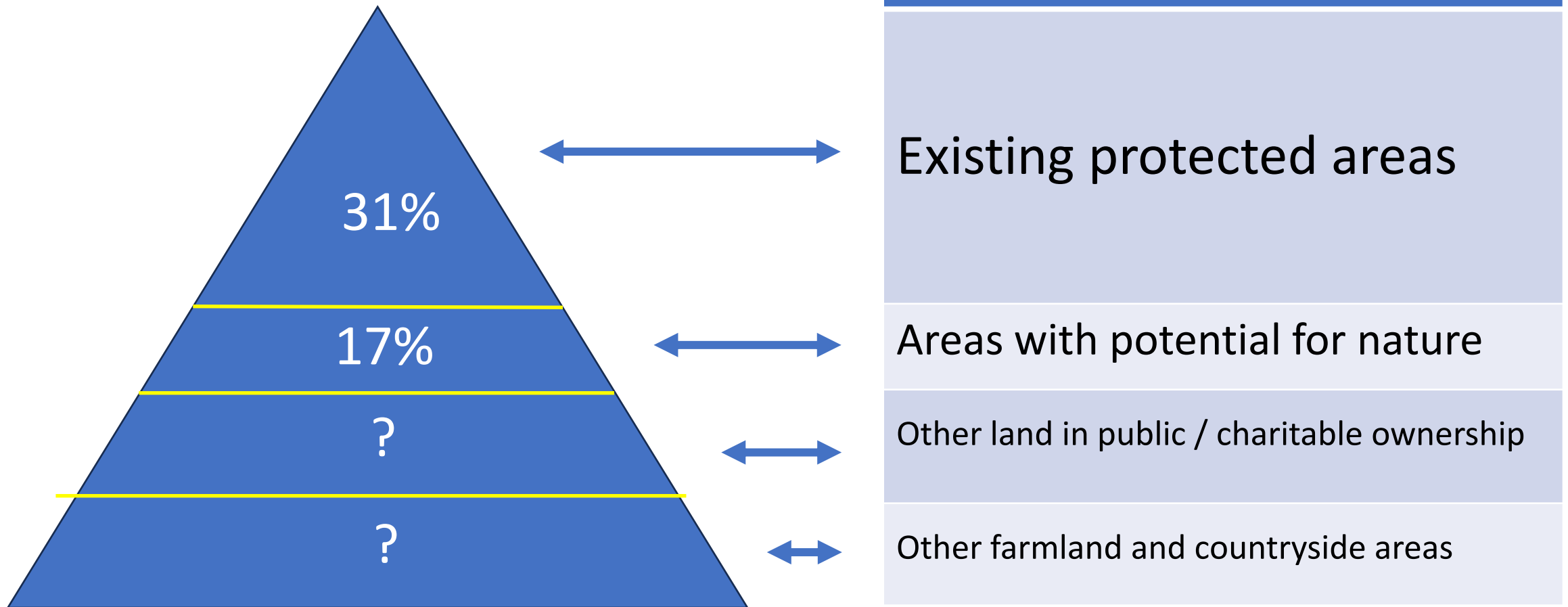
63% of Cannock Chase is owned by 7 public bodies / charitable organisations



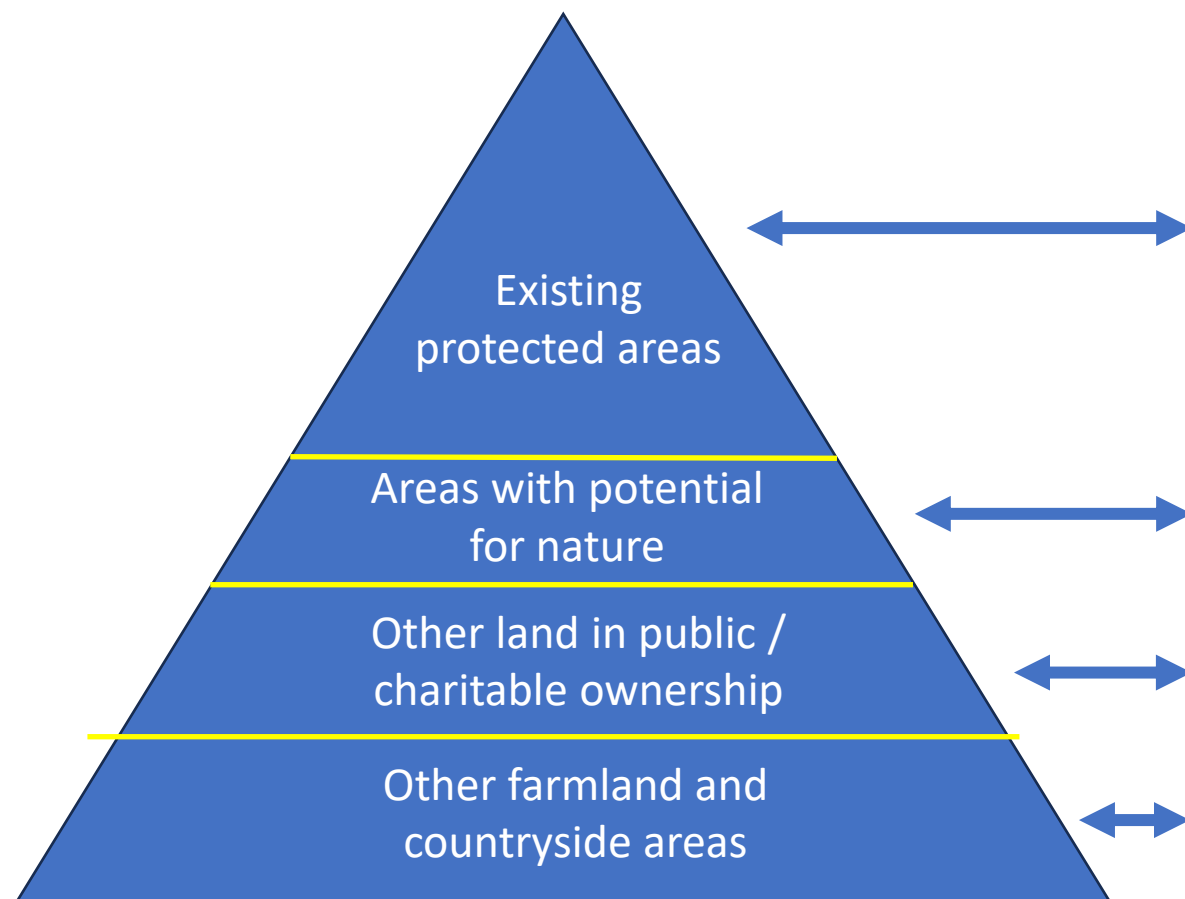
Other farmland and countryside areas

24% of the National
Landscape is in an agri-
environment scheme

30by30 – opportunities



30by30 – delivering



Interventions

Bring 100% of all existing protected areas into good condition

Support areas with potential to be protected and managed for nature for the long term

Seek to prioritise the management for nature of other areas of public /charitable land for nature

Seek to influence the recovery of nature on other surrounding and intervening land

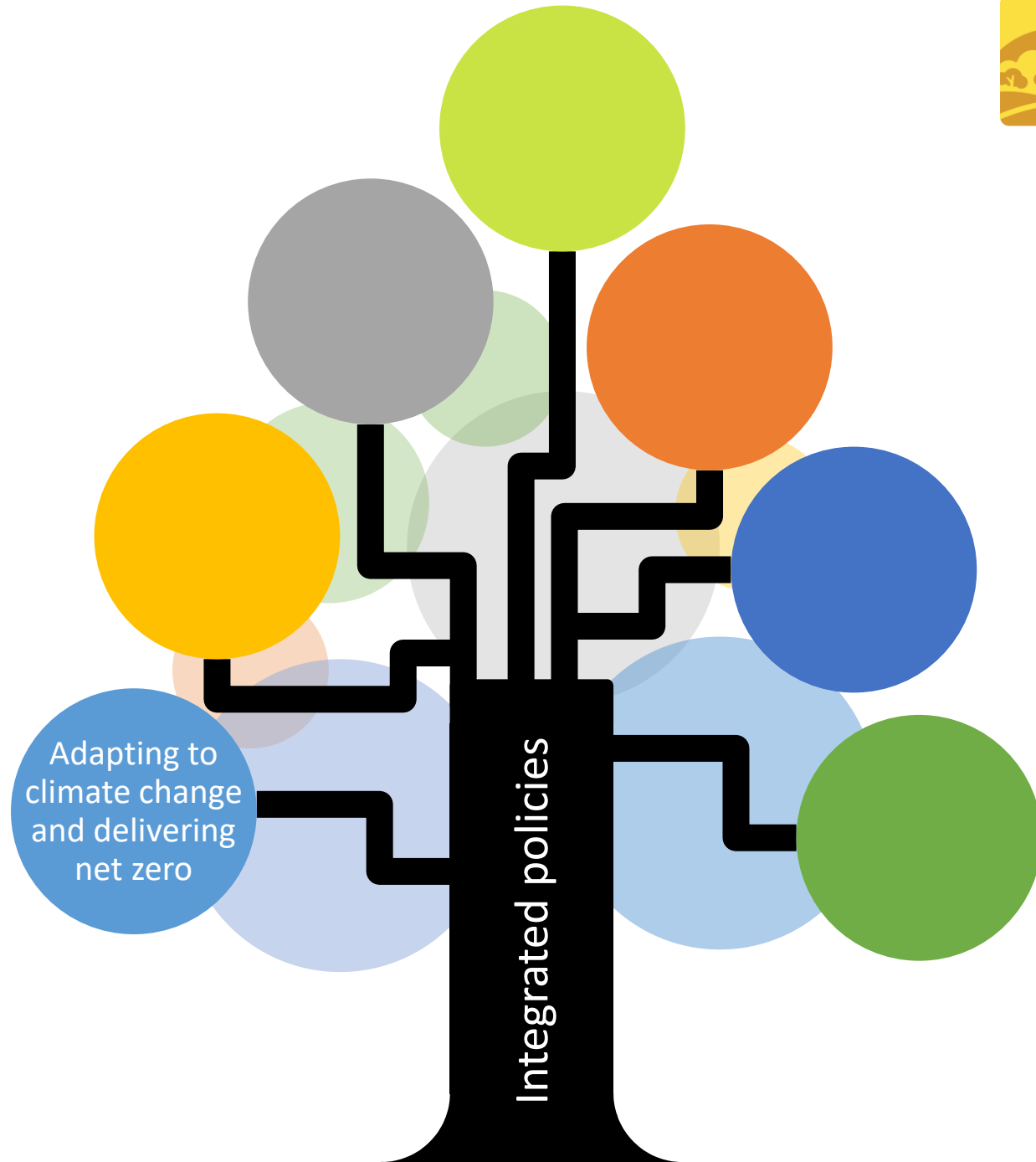
Species recovery / control

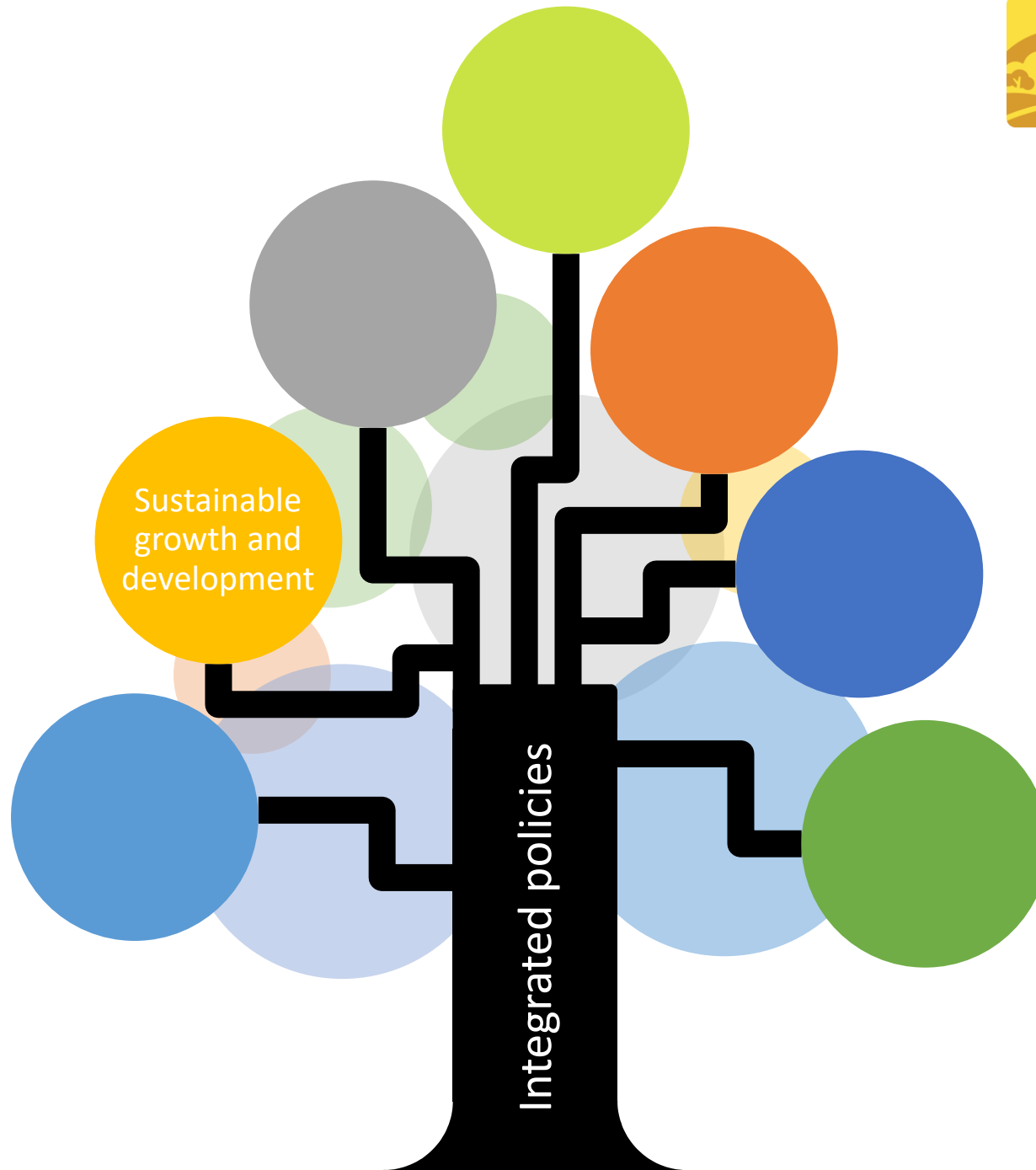
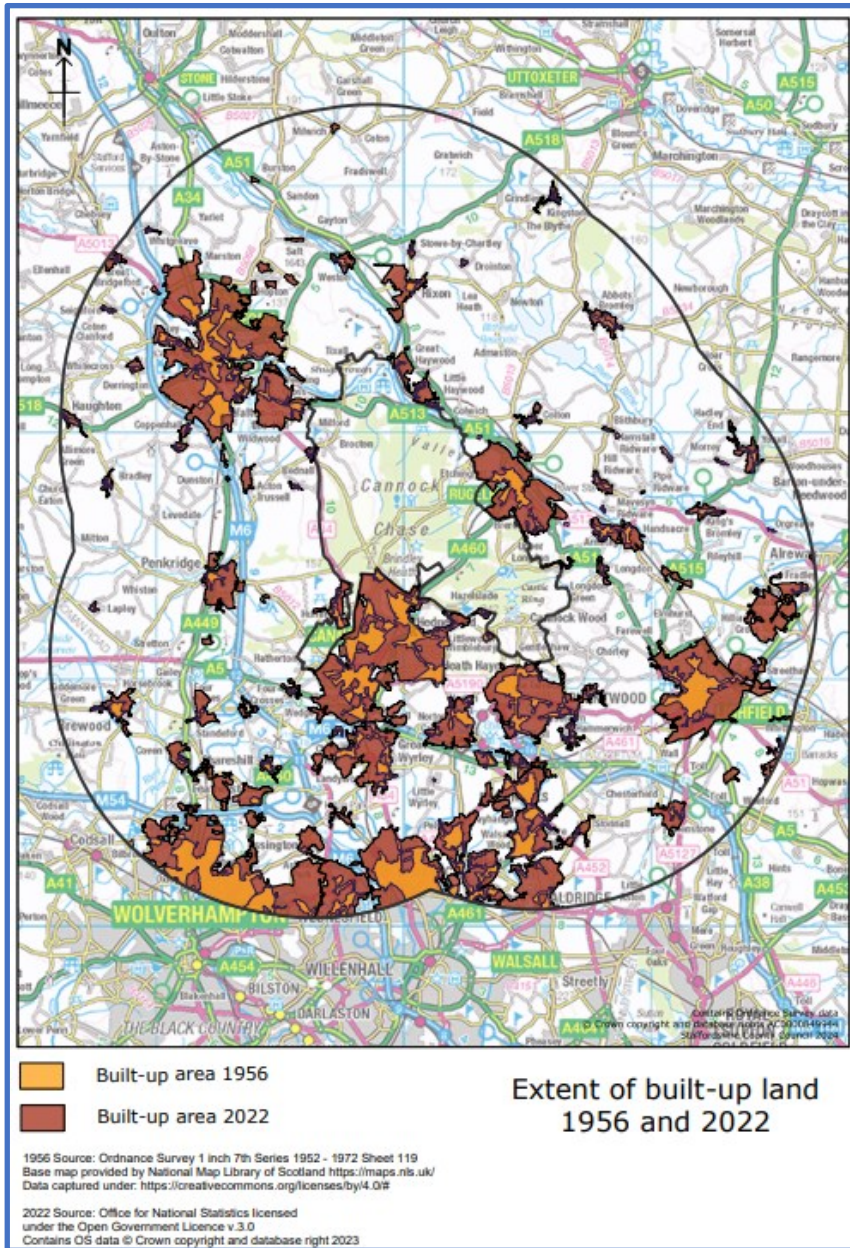
- Special measures for those species that need extra help

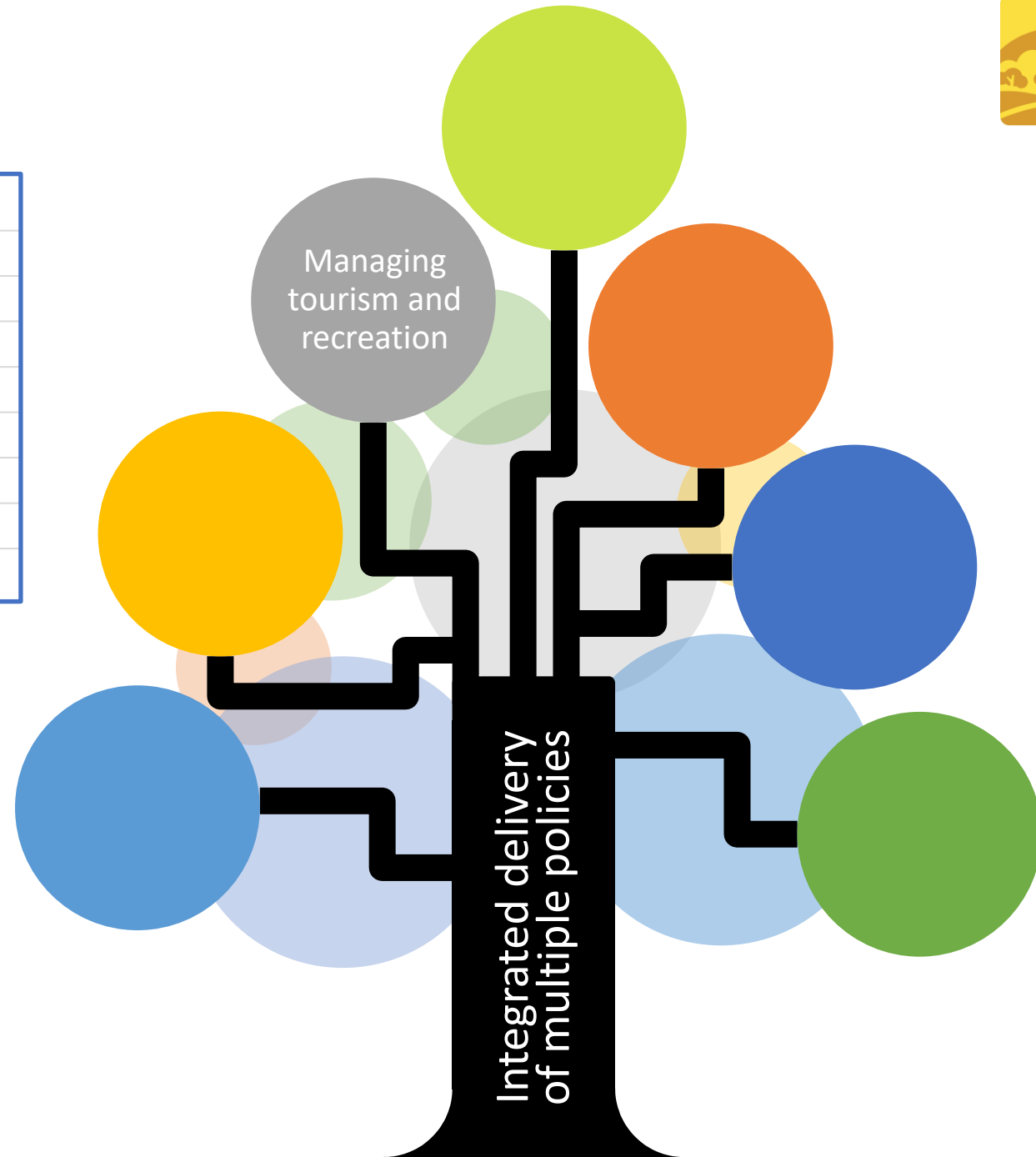
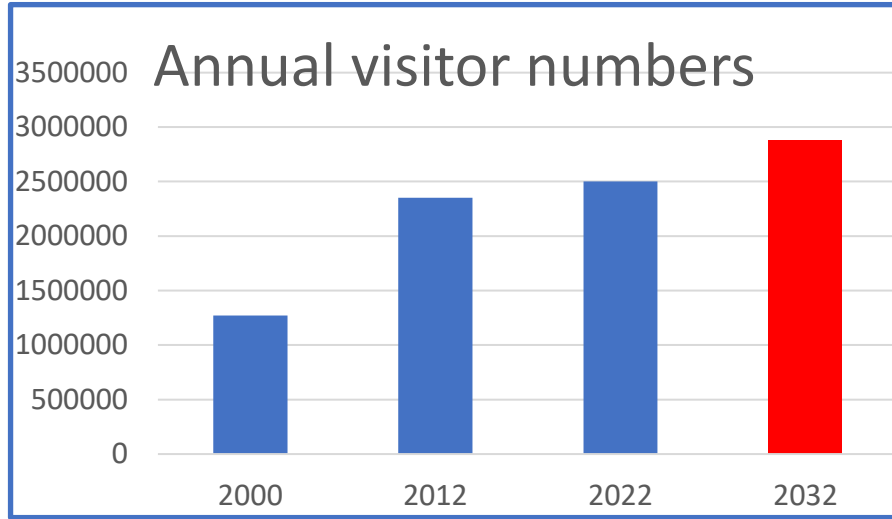


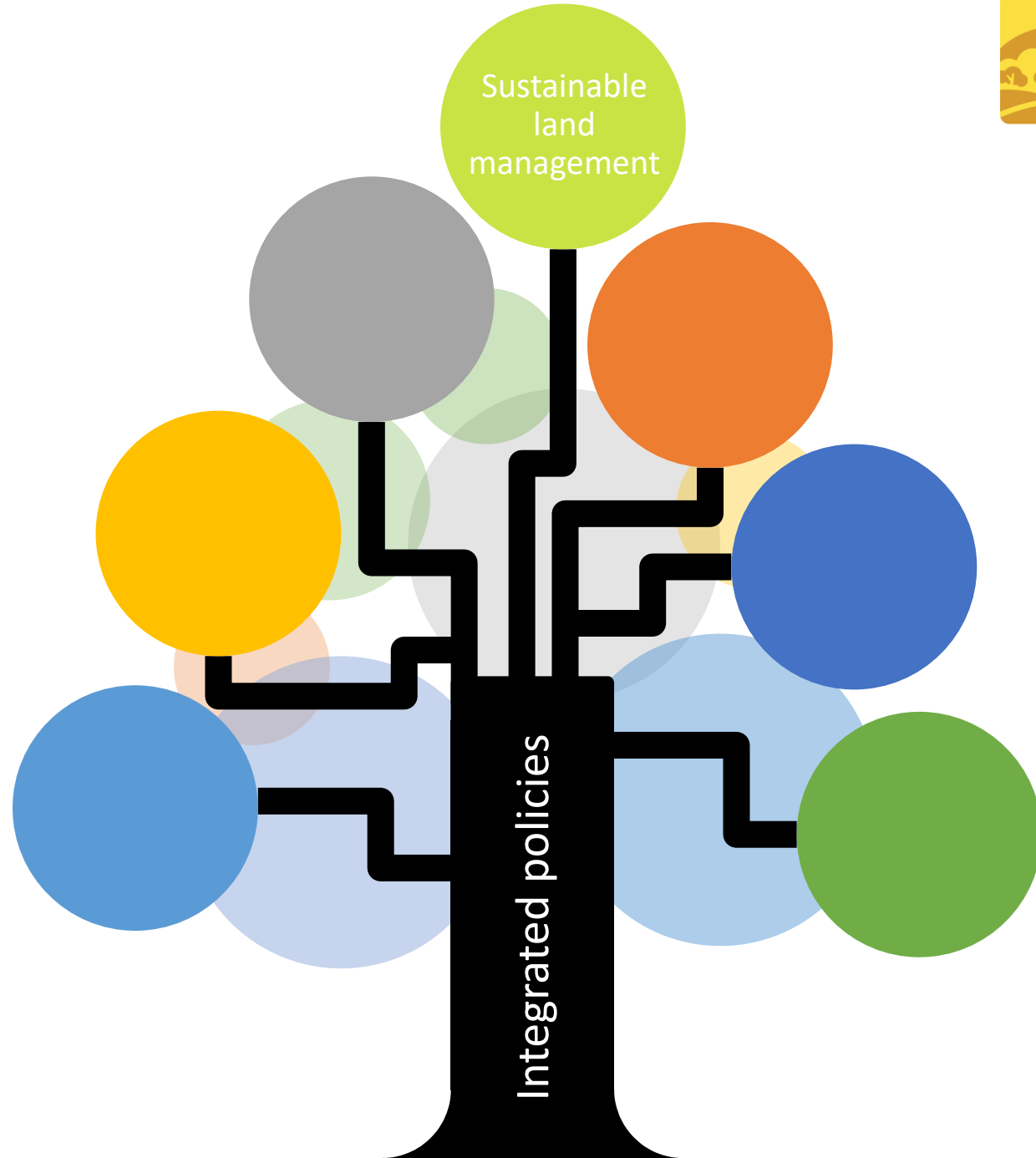
- Managing threats posed by invasive non-native species (INNS)

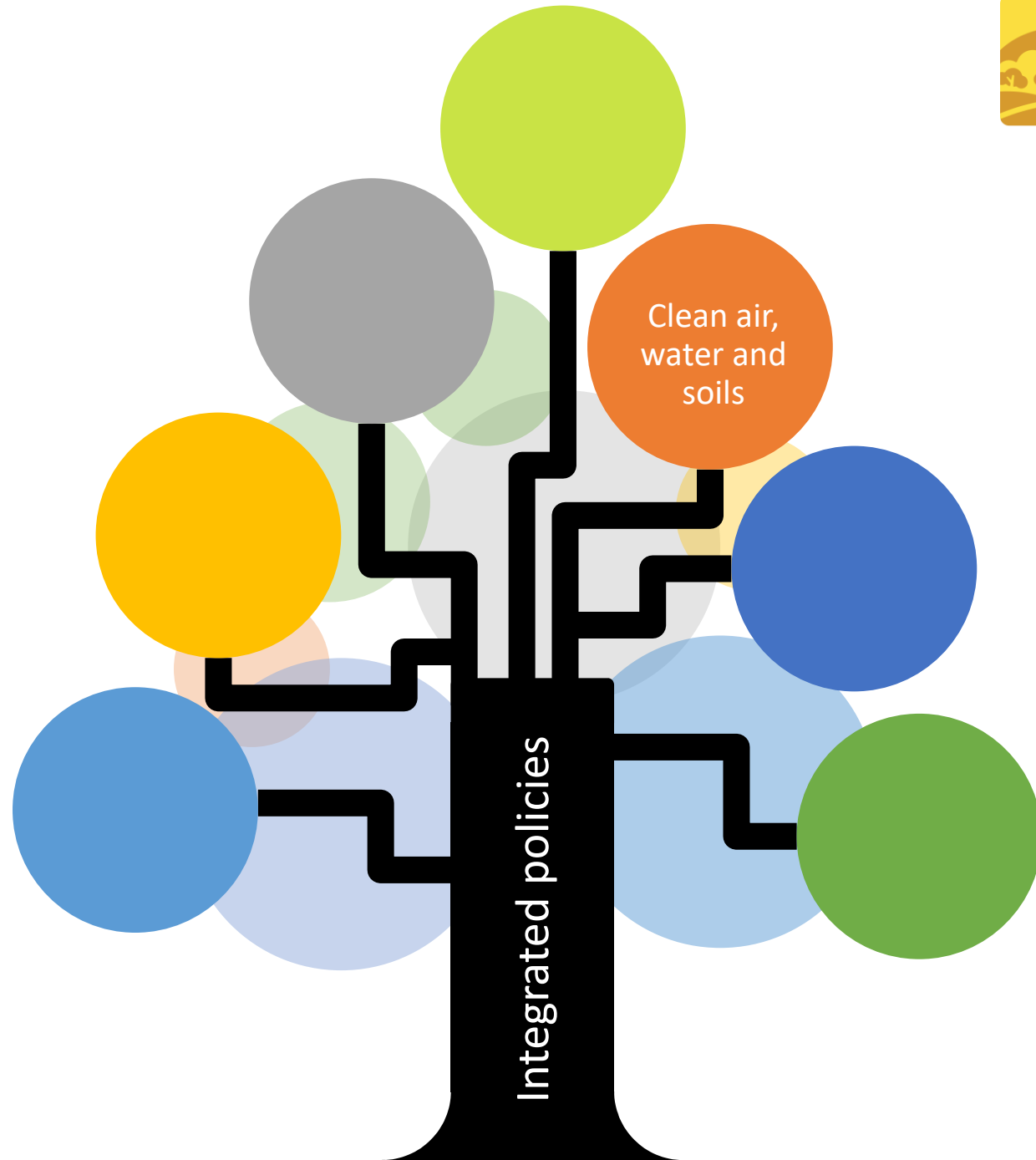












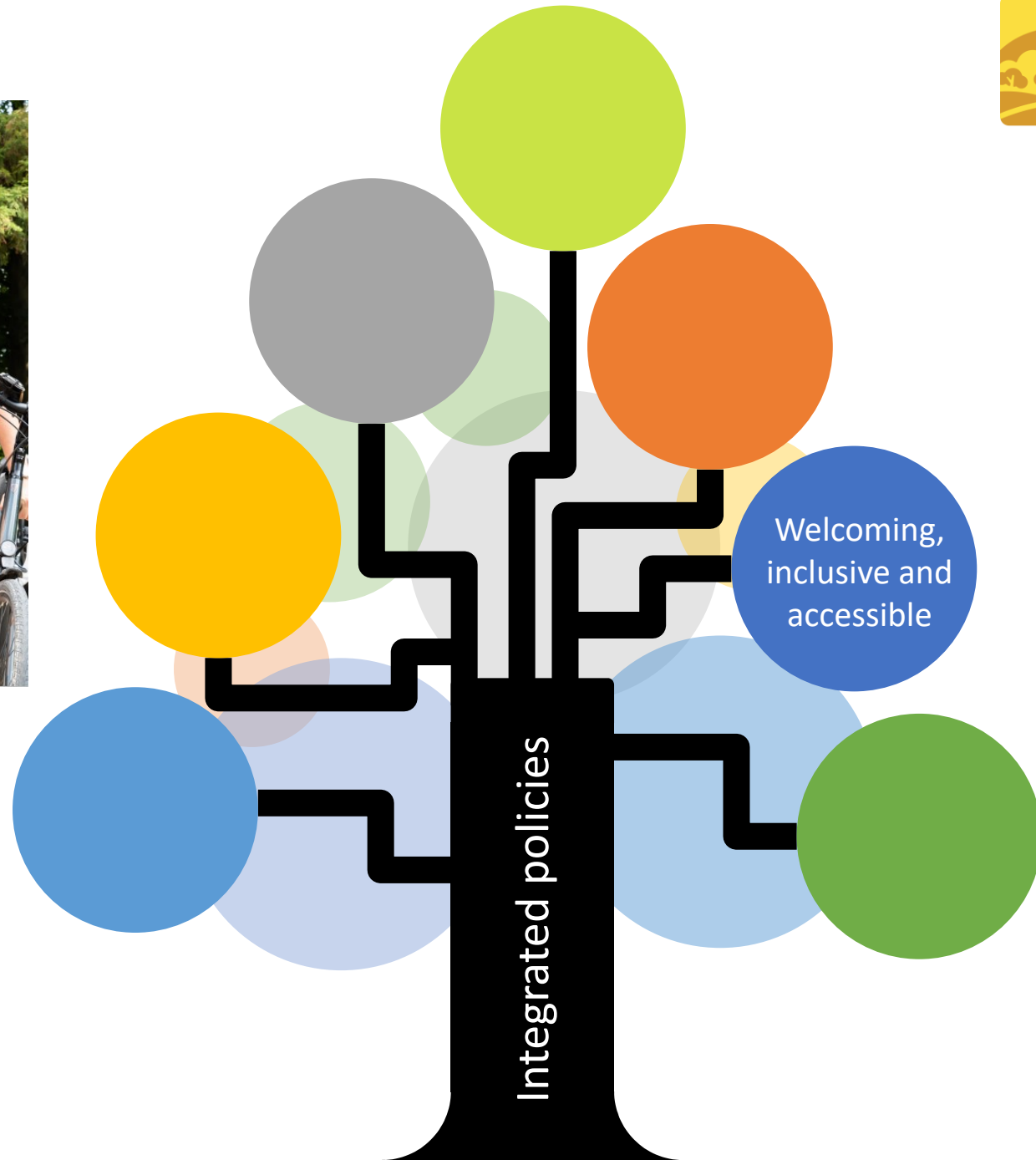
Cannock Chase

Access Guide

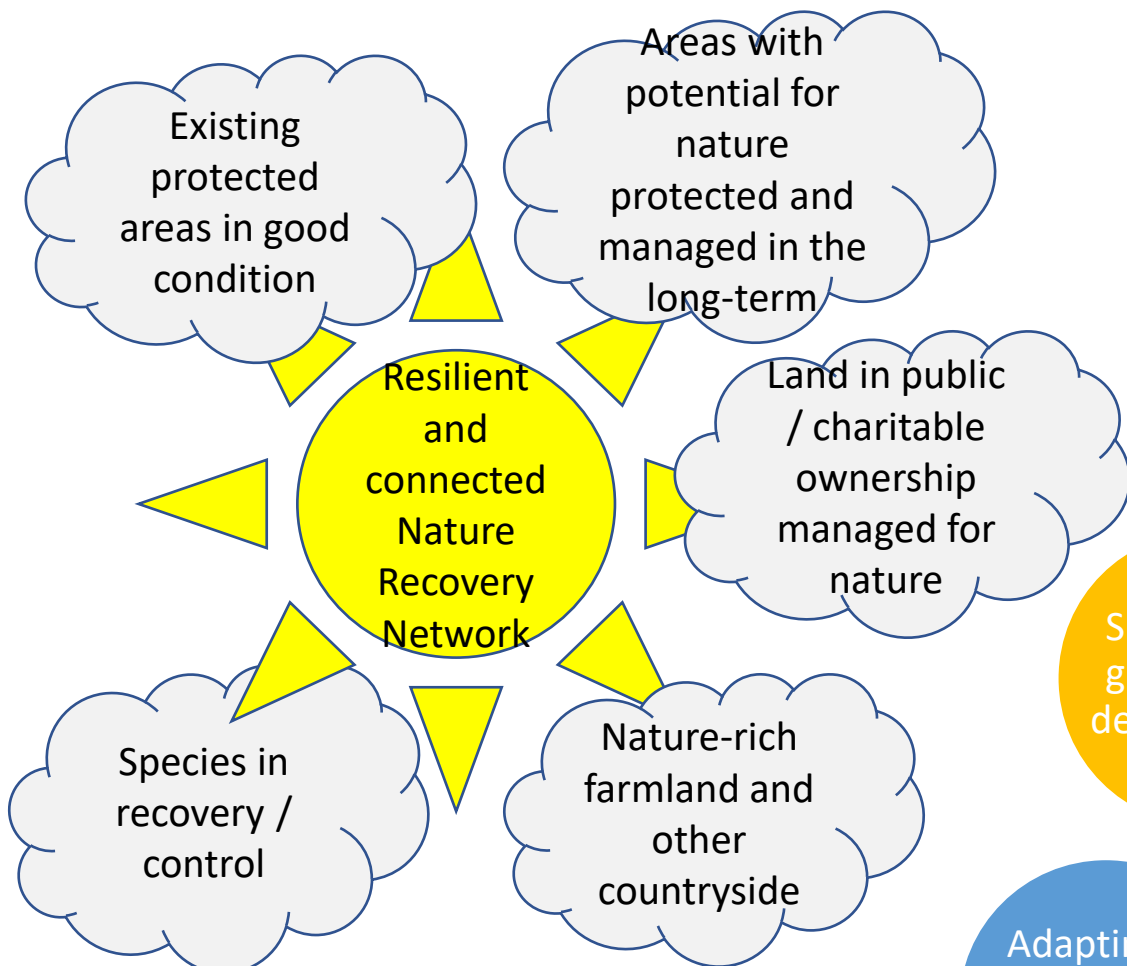
Welcome to the Access Guide
for Cannock Chase
National Landscape



**Cannock
Chase**
National
Landscape







Where we want to be

