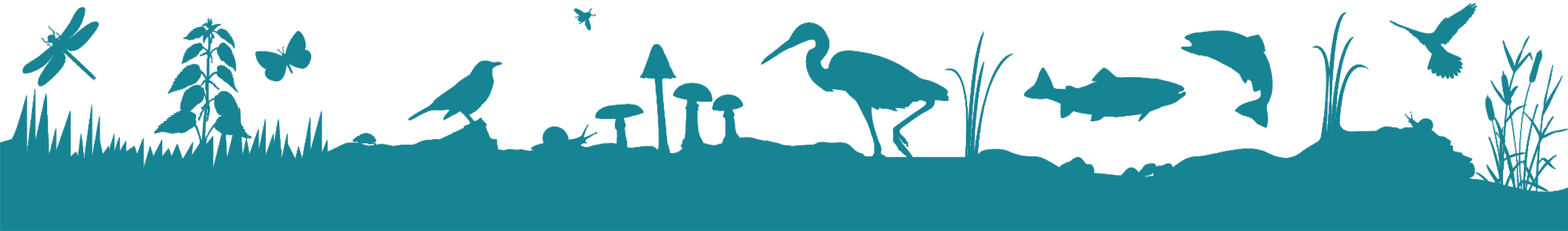




Staffordshire
Wildlife Trust

Connecting Cannock Chase (and other grazing projects)

Jeff Sim – Head of Nature Reserves



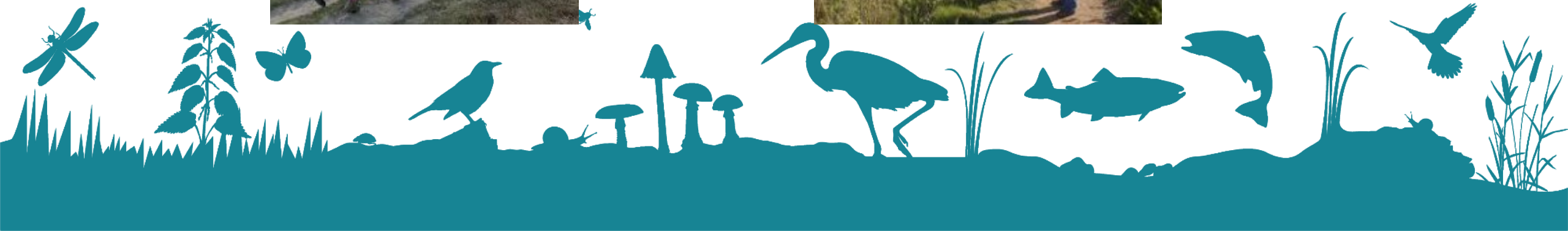
Why is heathland important?

- An ancient landscape
- UK contains 20% of planet's lowland heath
- Cannock Chase contains largest surviving area of lowland heath in Central England
- 80% of England's heathlands have been lost in past 200 years

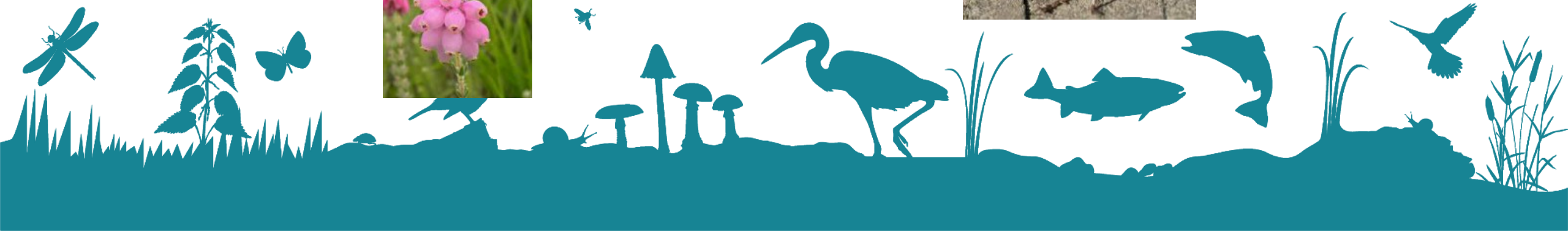




Heathland – fantastic for people



Heathland – fantastic for wildlife



A managed landscape



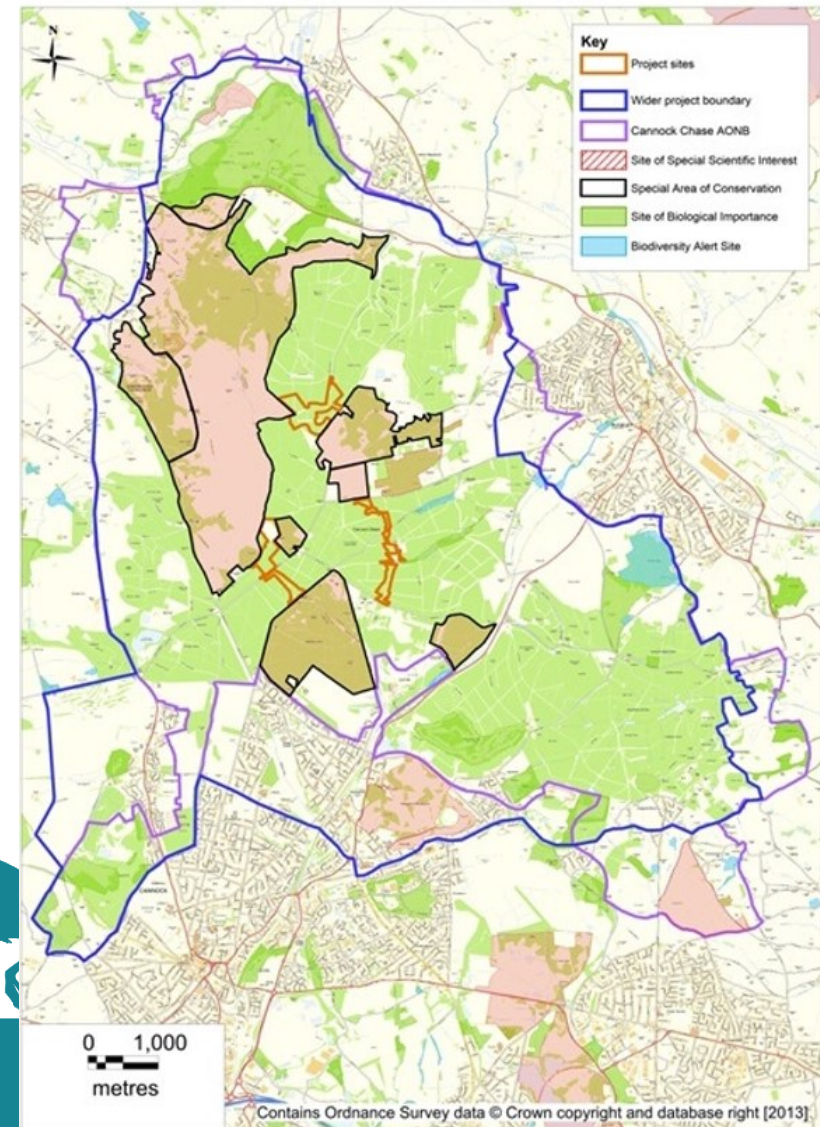
Oldacre Valley in the early 1900s. Old photographs can reveal how much heathland habitats have changed in the last century.



Original Connecting Cannock Chase project

- 2012-2015 partnership project
- Heathland restoration partnership project
 - Staffordshire Wildlife Trust
 - Forestry Commission
 - Natural England
 - Staffordshire County Council
 - Cannock Chase AONB
- 73 hectares across three corridors connecting existing SSSI heathland
- **First grazing on Cannock Chase in 100 years !**

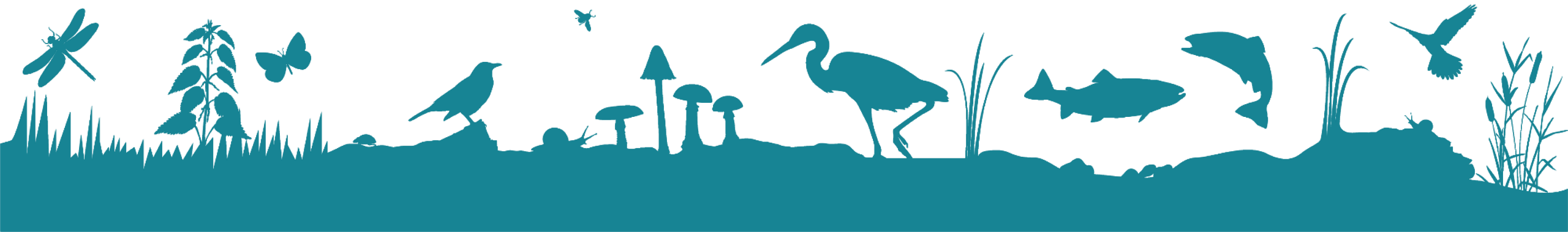
Designations and Connecting Cannock Chase project boundaries

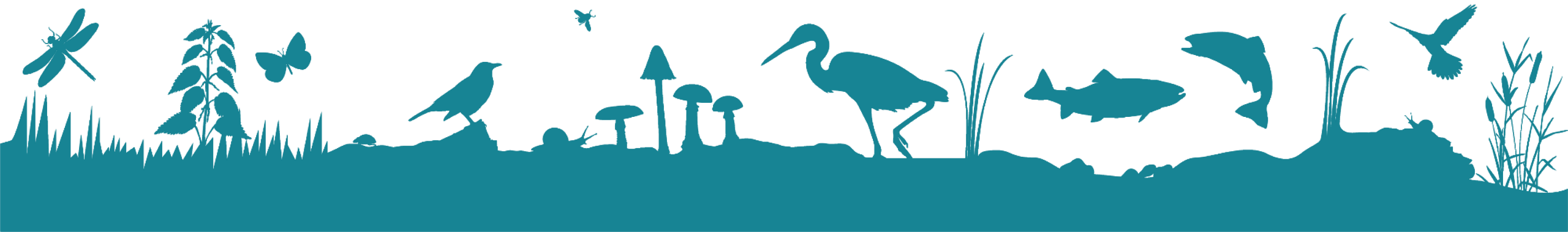


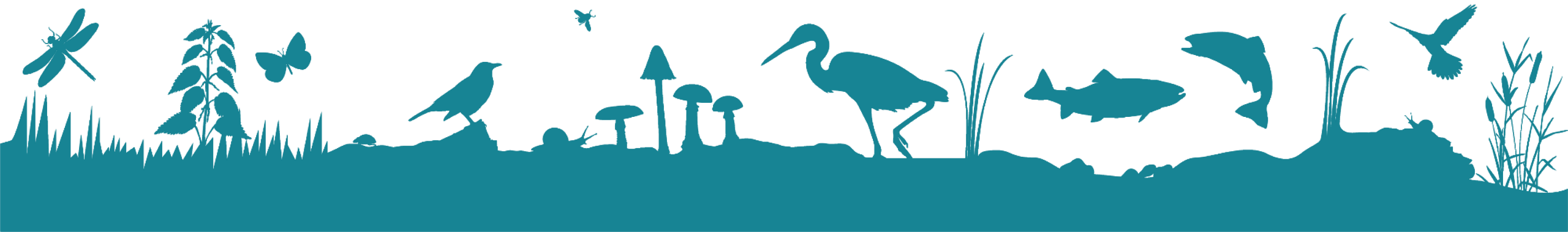






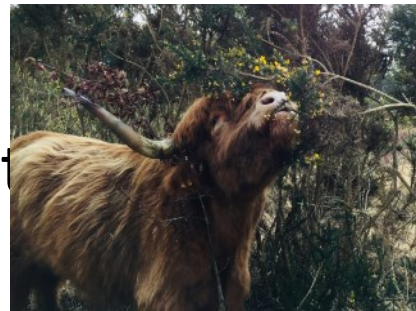




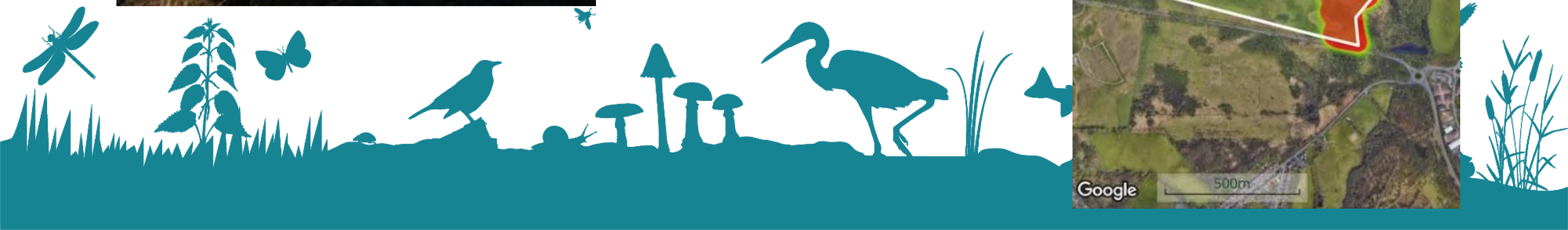


Why graze heathlands with cattle?

- Cattle control the fast growing grasses and vegetation
- Weaken bracken by trampling
- Keep invasive species under control
- More sensitive and kind to habitat
- Remove nutrients
- Create bare earth and other micro habitats
- Reduce wildfire risk



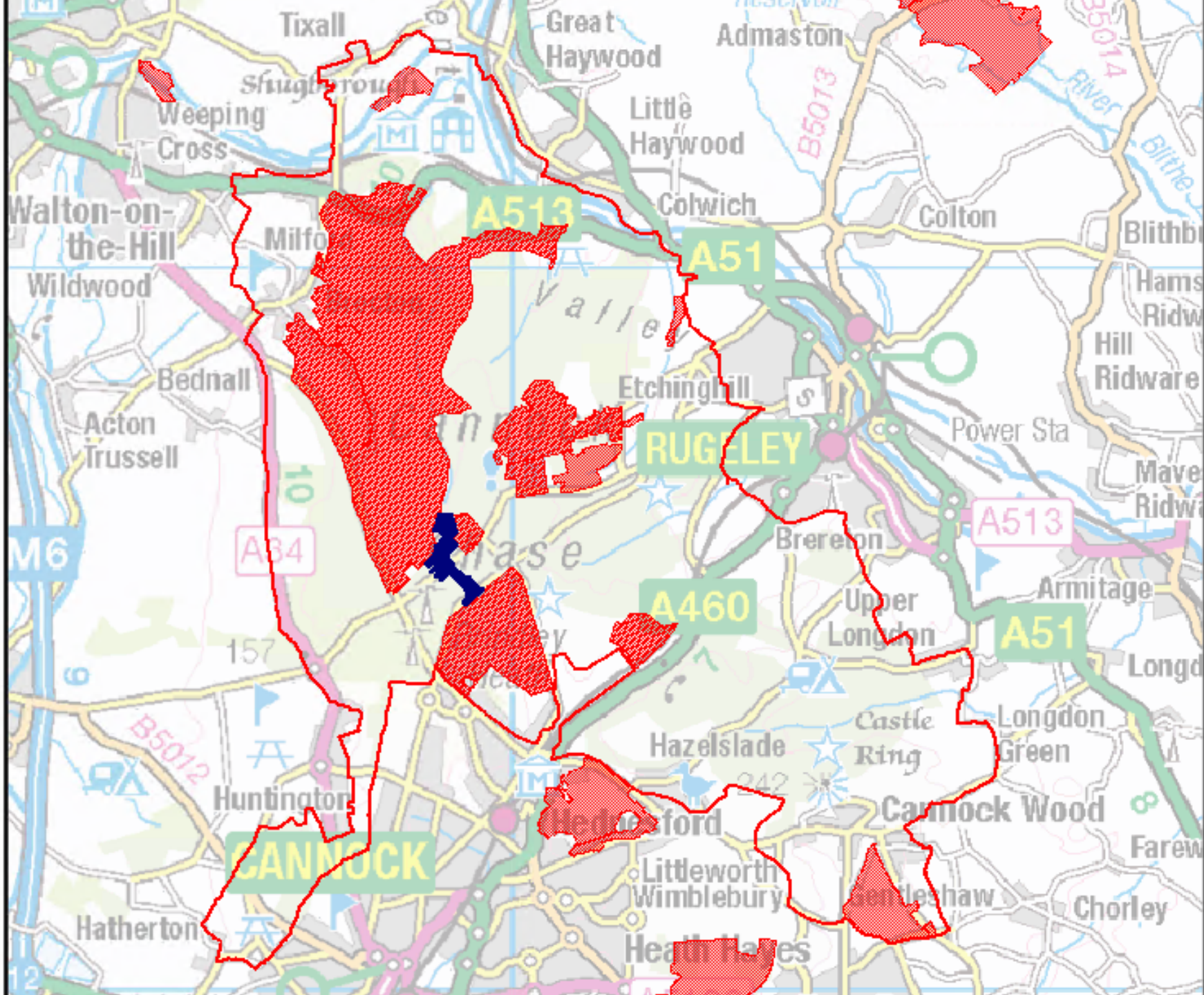
GPS collar 'NoFence' grazing system







Connecting Cannock Chase 2024

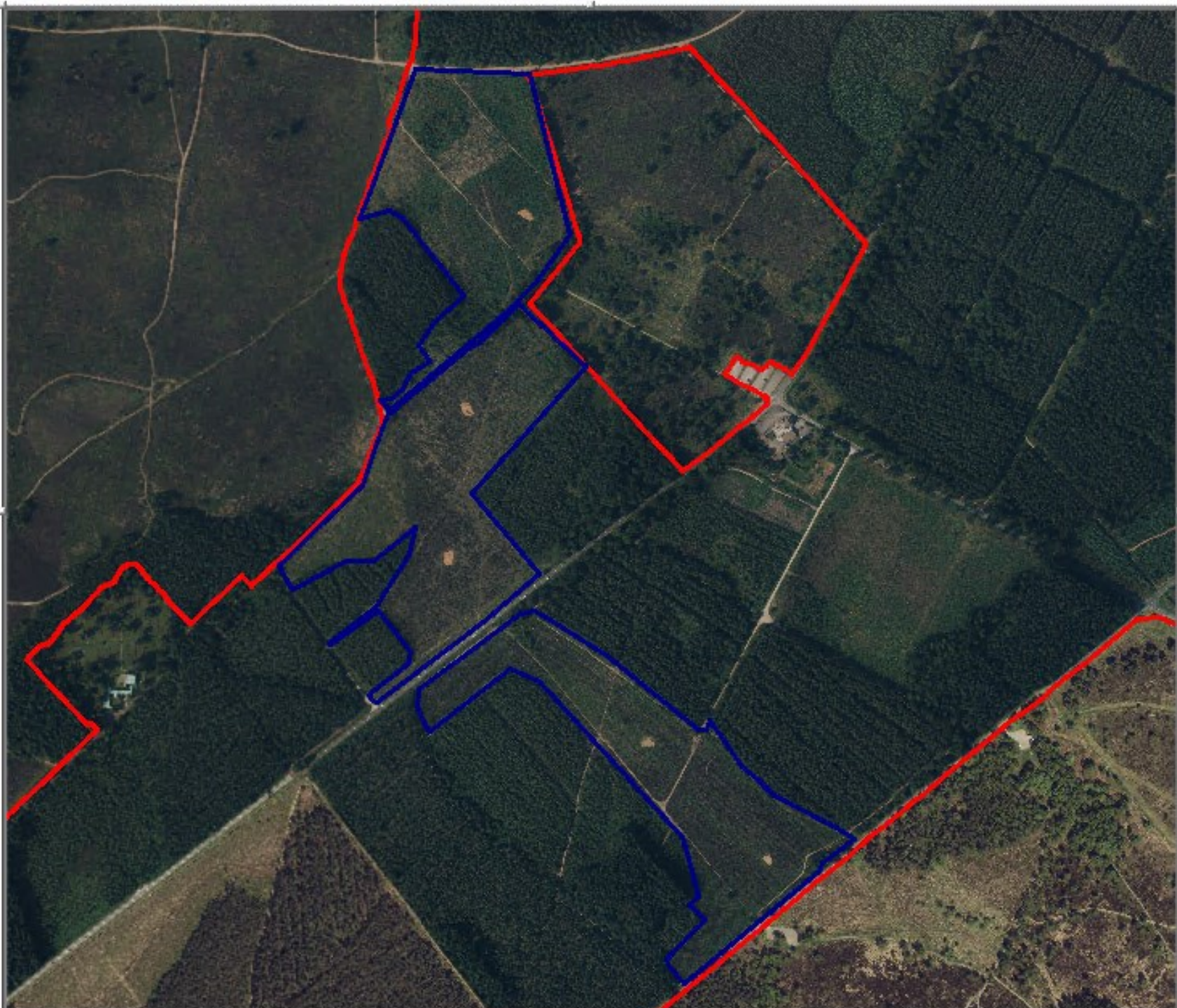
- 26 hectares of land leased to SWT from Forestry England – 11 year lease
- Links Sherbrook Valley to Brindley Heath
- Countryside Stewardship Agreement to fund programme
 - Scrub control
 - Bracken management
- Seeking funding to repair boundary fences!
- Hopefully cattle back later this year.








-  Connecting Cannock Chase project area
-  SSSI
-  SAC
-  National Landscape Boundary

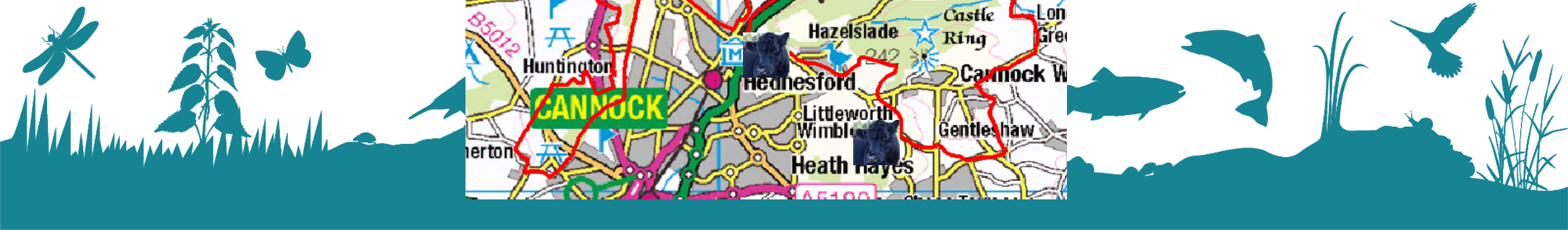
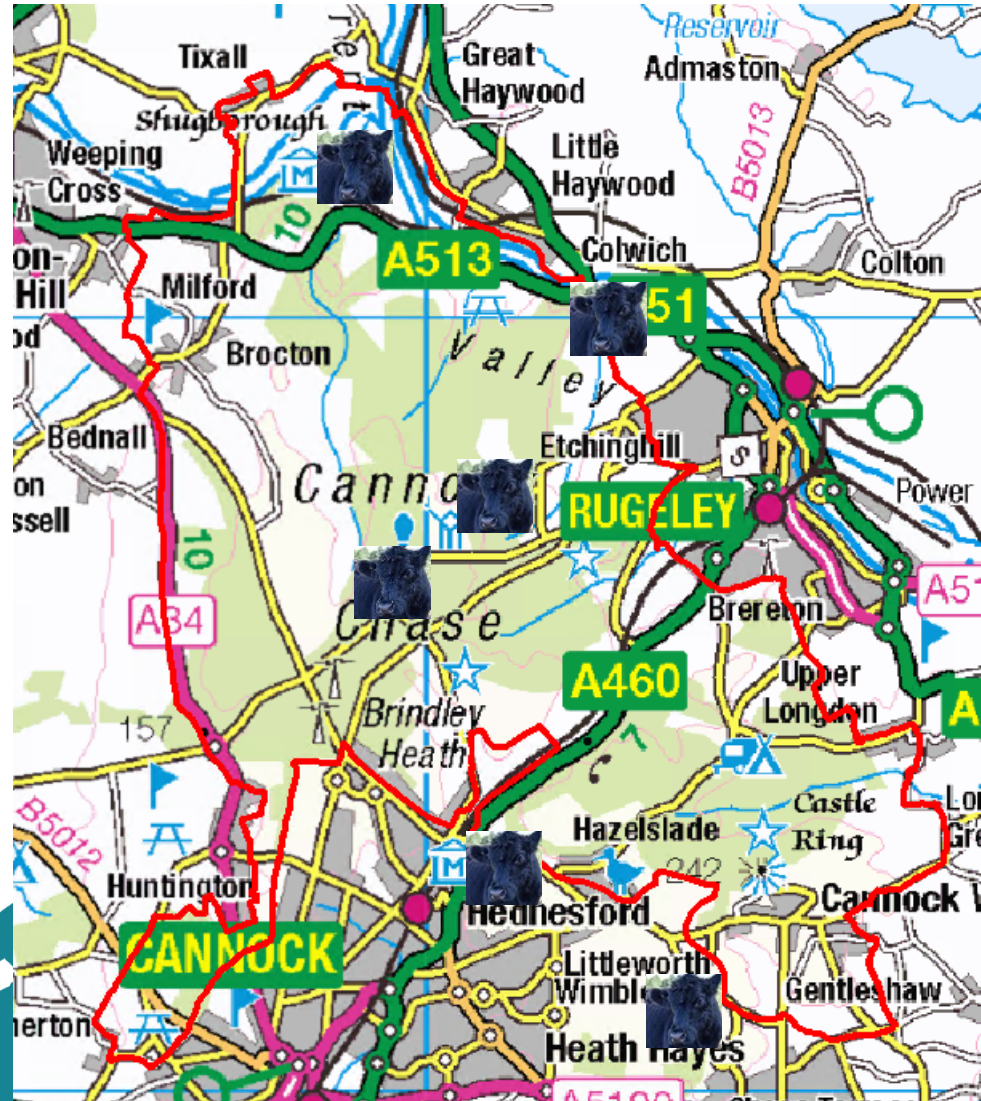




-  Connecting Cannock Chase project area
-  SAC
-  National Landscape Boundary



Grazing on and around The Chase





Thank you

