

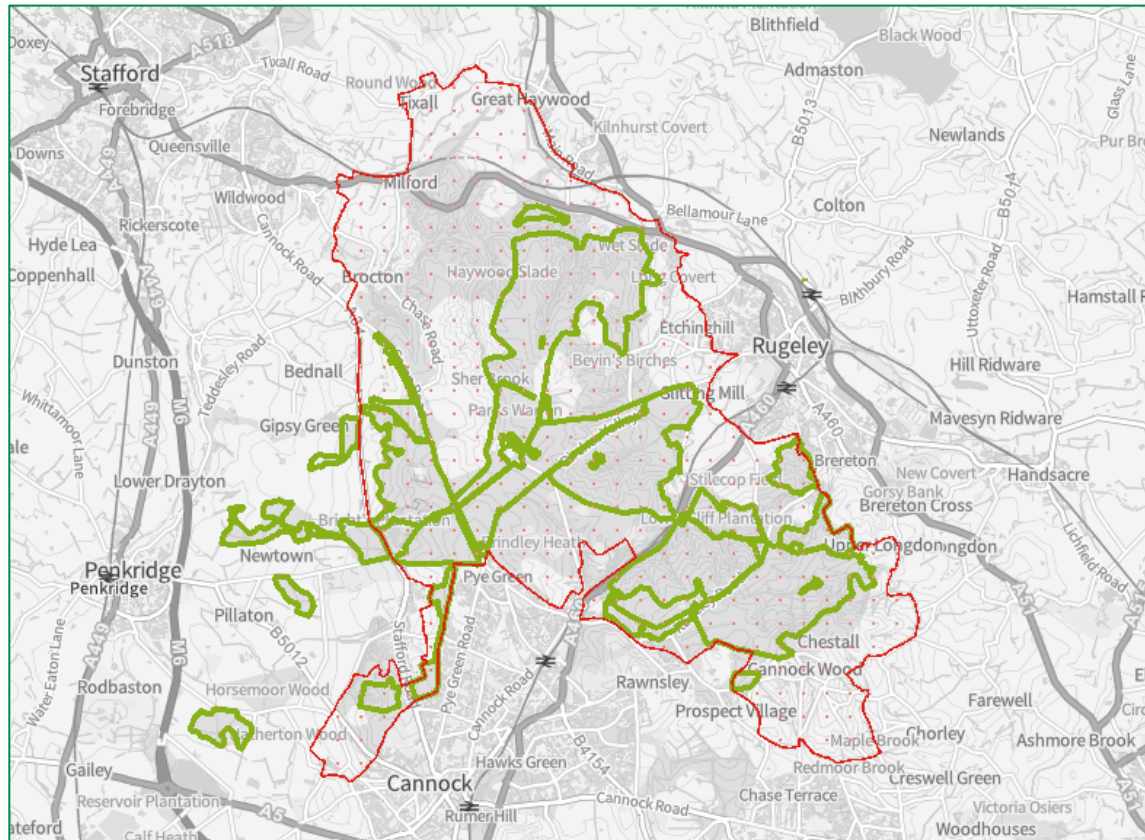
Timber, People and Wildlife

Cannock Chase National Landscape Annual Conference 2024

Milly Robinson - District Ecologist



Covers an area of ~2,600ha of which ~2,200ha is woodland = ~38% of Cannock Chase National Landscape



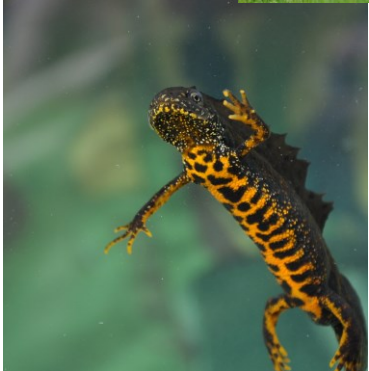
Forestry England's management objectives for the forest are:

- **Timber:** balance the production of quality, sustainable timber.
- **People:** conserve heritage features and facilitate recreation.
- **Wildlife:** maintain and enhance Cannock Chase's biodiversity, whilst improving the resilience of the forest to climate change.



Legislation, guidance and policy

International



National



Internal

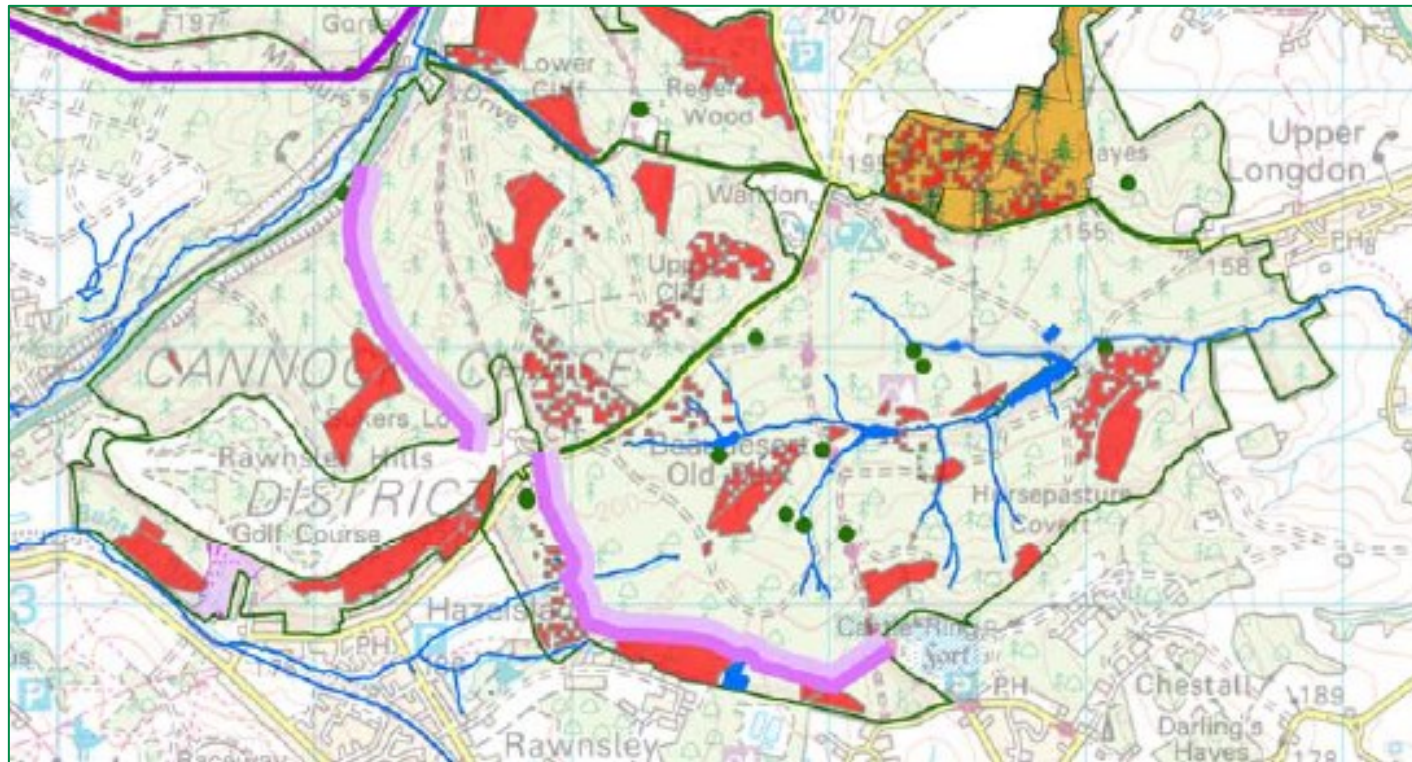




We want to hear your thoughts...

[Cannock Chase Forest Plan 2024 Consultation - Forestry Commission England - Citizen Space \(forestryengland.uk\)](https://forestryengland.uk)

Runs until: 18th May 2024



Questions?

