

Nature Recovery in Purbeck

Tom Clarke

Senior Volunteering and
Community Manager
National Trust



Wild
Purbeck
NATURE IMPROVEMENT AREA

Nature around Purbeck



In Purbeck you can see more species in one place than in any other part of the UK. Here are some of the best places to experience nature:

- National Trust Visitor Hubs**
Knoll Beach, Studland has a nature rich shallow sea and golden beaches, with the sand dunes behind home to lots of rare animals including sand lizards.
Corfe Castle is a perfect base for discovering the wildflower rich Purbeck chalk ridge and ancient Corfe Common.
Brownsea Island is a wild lagoon island which is inhabited by red squirrels and its lagoon is fantastic for birds.

- National Trust facilities**
Car Park

- Partner Organisation Visitor Hubs**
Birds of Pool Harbour have a visitor centre, with information on the bird life of the harbour, including the osprey reintroduction project.
RSPB Arne is an exemplary heathland peninsula with sika deer and bird life galore.
Durston Country Park have fantastic coastal grasslands above cliffs full of sea birds and great for dolphin spotting from.
DWT Kimmeridge have opened their new Wild Seas Centre, and is an amazing place to rock pool and follow the sneaked nature trail.

Other facilities
Car Park





**National
Trust**

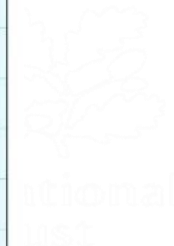
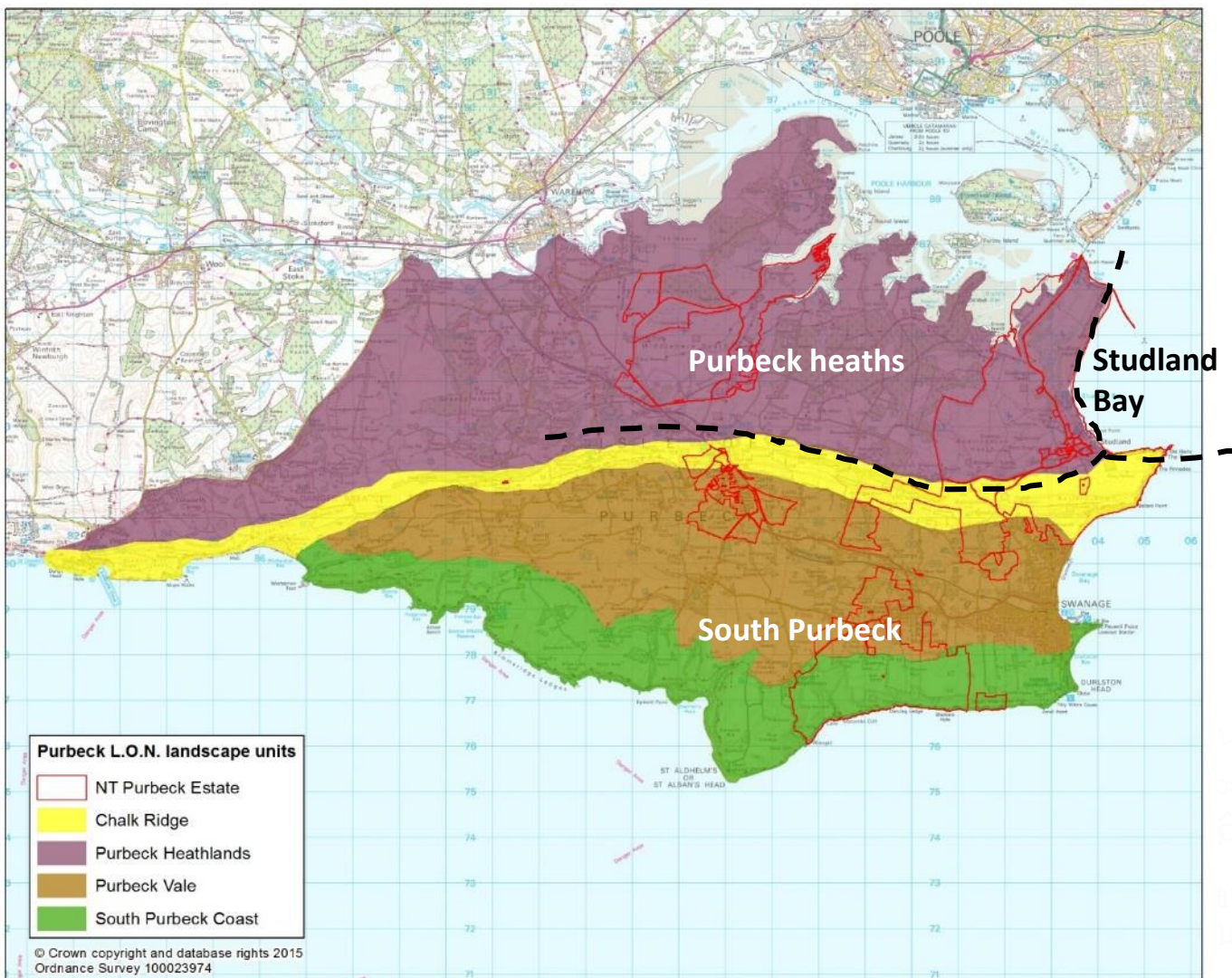
Property: Purbeck

Title: Land, Outdoors and
Nature in Purbeck:
Main landscape units

Scale at A3: 1:75,000

Grid ref: 393,381 81,332

Date: 22/07/2016

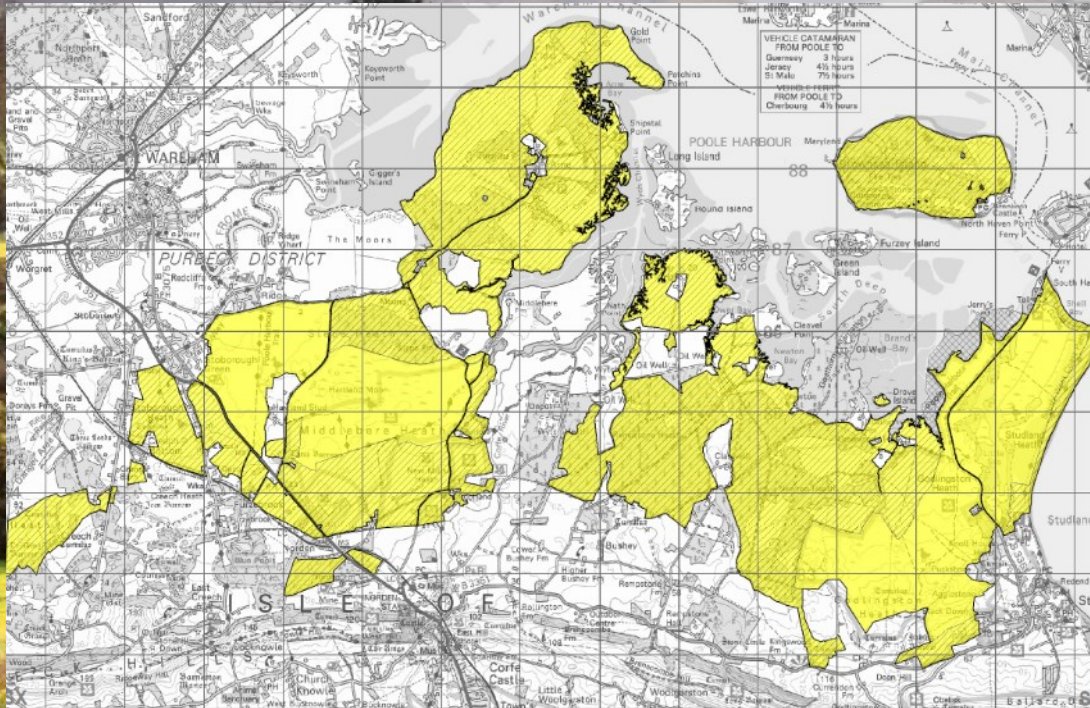


Better and bigger:
Purbeck Heaths National Nature Reserve



Purbeck Heaths National Nature Reserve

Restoring SCALE, CONNECTIVITY and ECOLOGICAL FUNCTION to Purbeck's heathlands



3300 ha heathlands and associated habitats, all functioning as one landscape

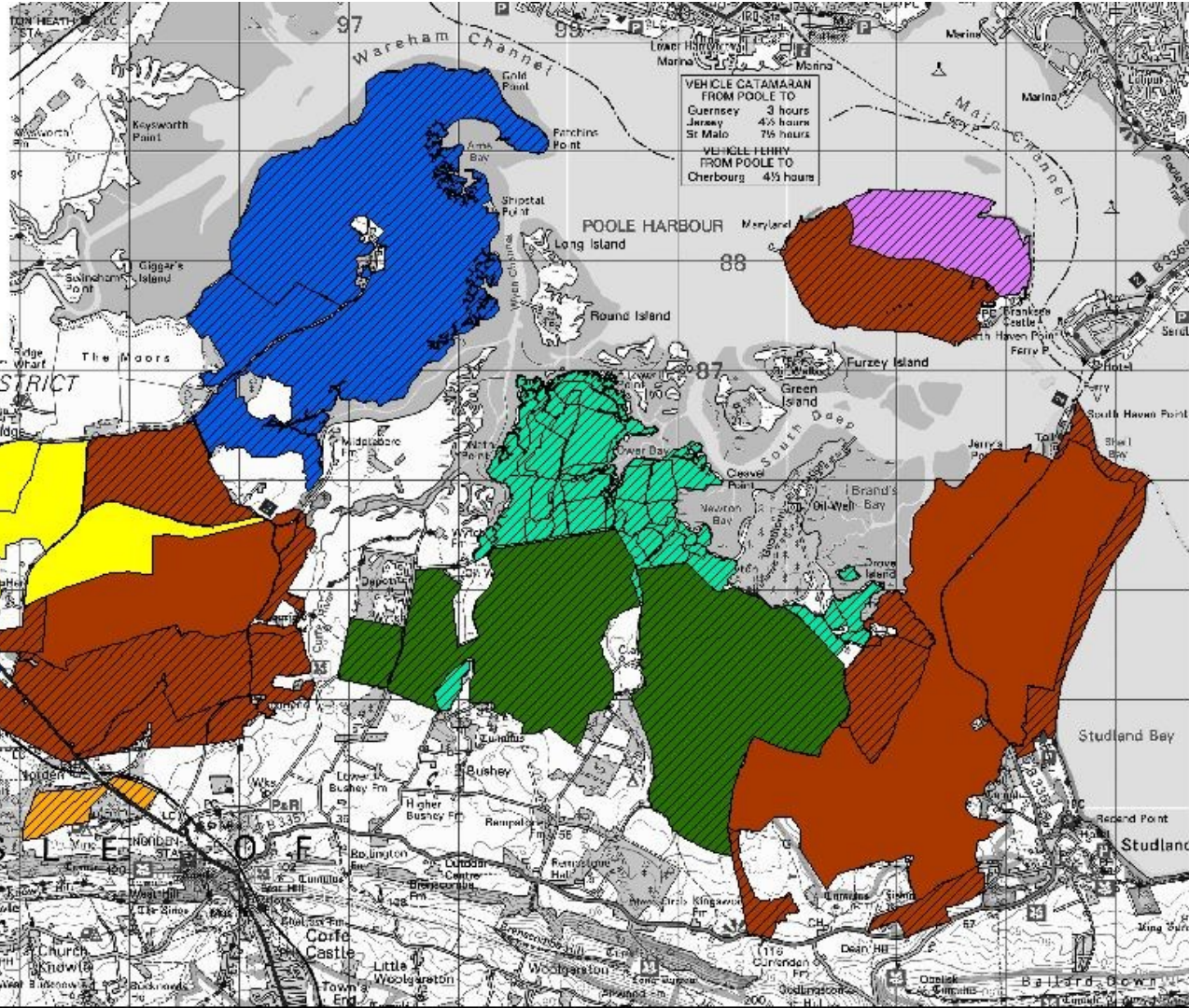
7 landowners working together

Now we have scale, we can start to restore a more natural, 'wilder' ecosystem:

- Wild grazing
- Beavers
- Peatlands

One connected landscape for people as well as nature

-  Rempstone Estate
-  DWT
-  National Trust
-  National Trust (current NNR)
-  RSPB
-  Forestry England
-  ARC
-  Natural England (current NNR)



People & Nature:

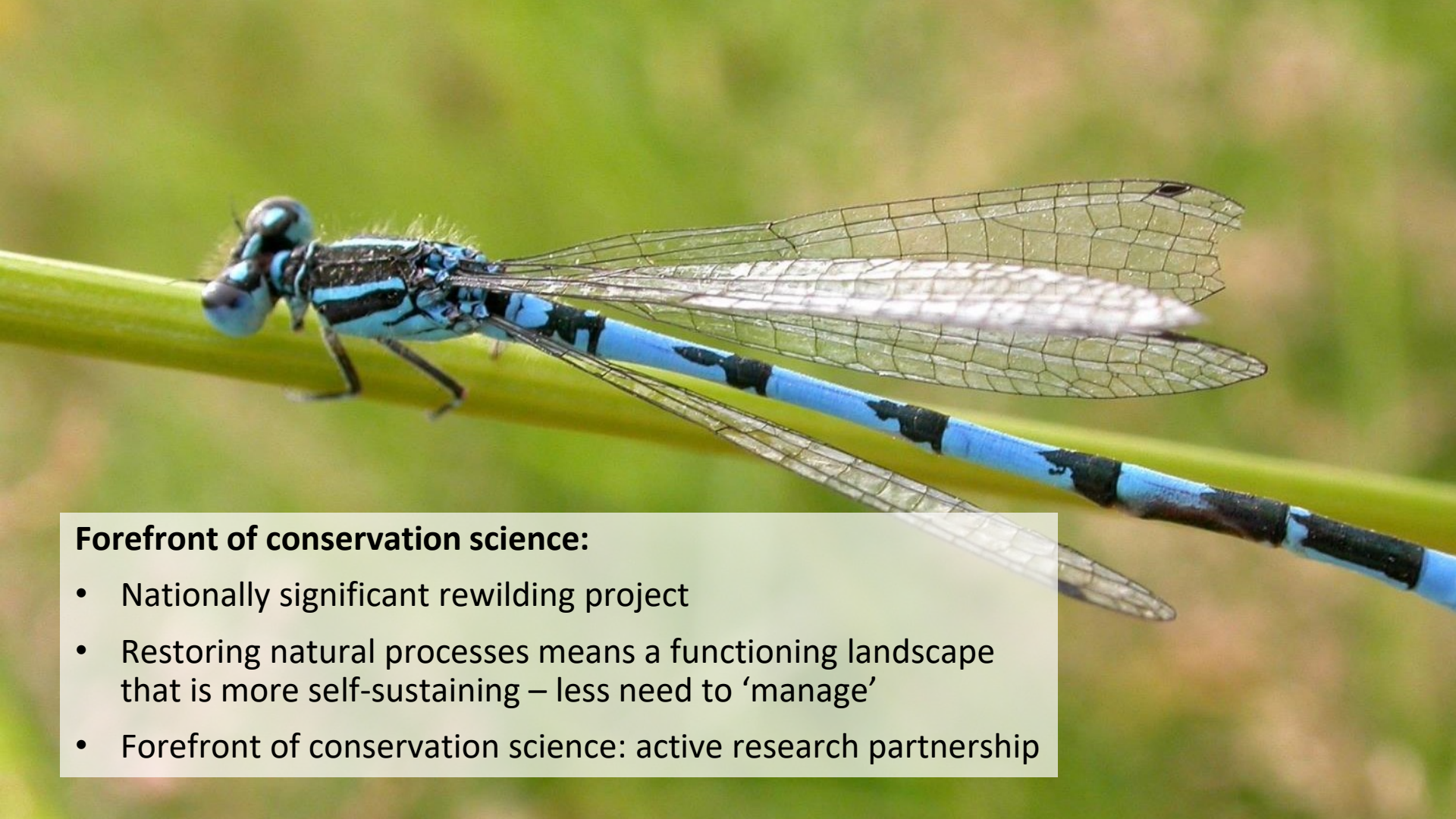
Visitor management

Sustainable tourism

Community
engagement

Purbeck Natural
History Forum





Forefront of conservation science:

- Nationally significant rewilding project
- Restoring natural processes means a functioning landscape that is more self-sustaining – less need to ‘manage’
- Forefront of conservation science: active research partnership

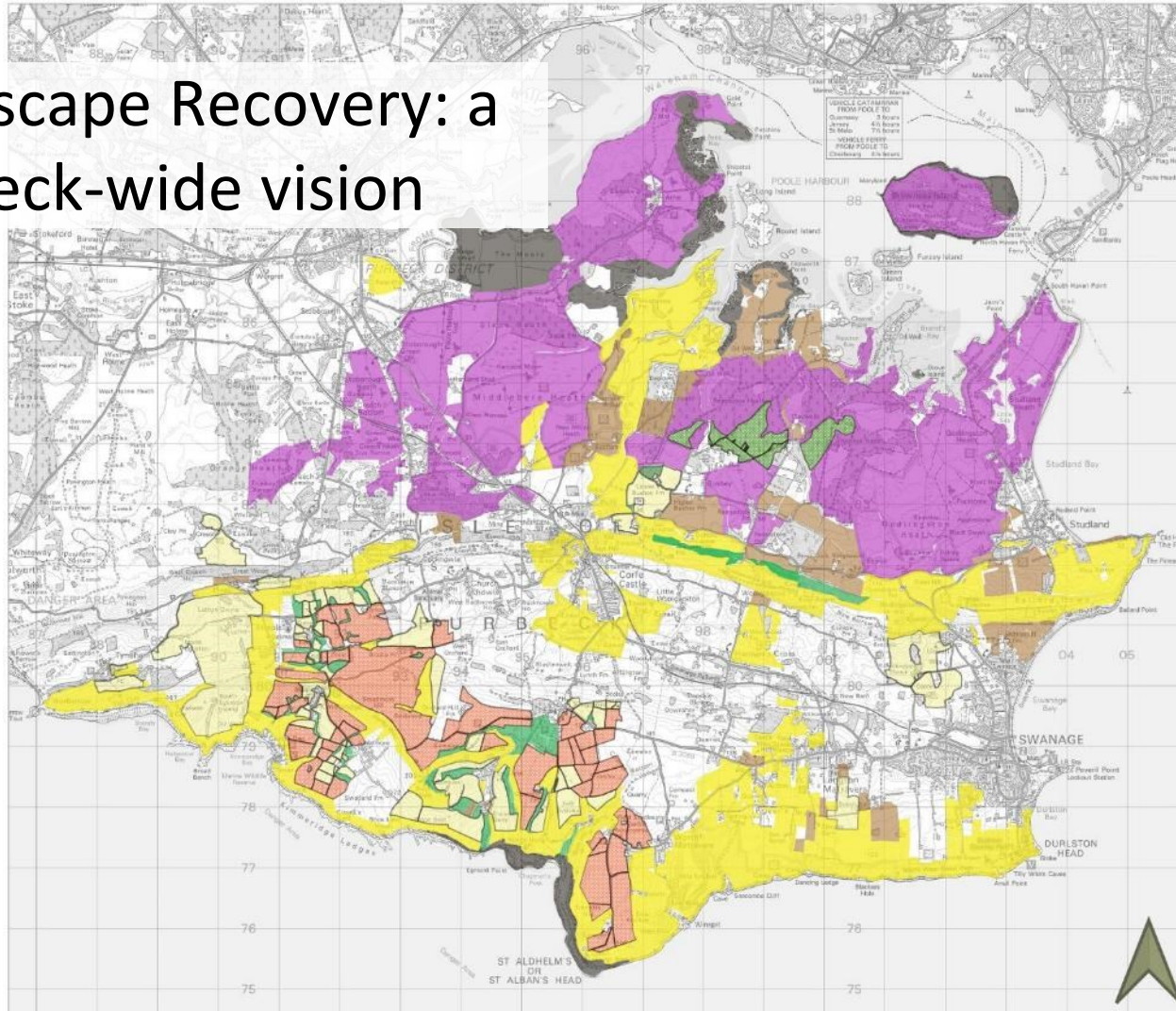
Landscape Recovery: a Purbeck-wide vision

Isle of Purbeck Landscape Recovery Proposed Land Use

Key

Proposed land use

- Heathland mosaic
- HNV grassland mosaic
- Support grassland
- Wood pasture
- BL woodland
- Traditional orchard
- Coastal
- Support CCF
- Support regen arable



Date	Version	Author
18/09/2023	V0.1	IR

© Crown copyright [and database rights] 2023 OS AC0000830671. Use of this data is subject to terms and conditions. © Dorset Council 2023.

0 1 2 km

More and joined-up: Working with our farm tenants



Opportunities for delivering LON across the Ridge, Vale and Coast were easy to identify.

For most tenants this meant a change in business model.

Some were keen – so long as the business stacked up; others didn't want to come with us.

Progress has been frustratingly slow

But a changing world (loss of BPS, new CS rates, rising fuel prices, Knepp....) has started to open doors.

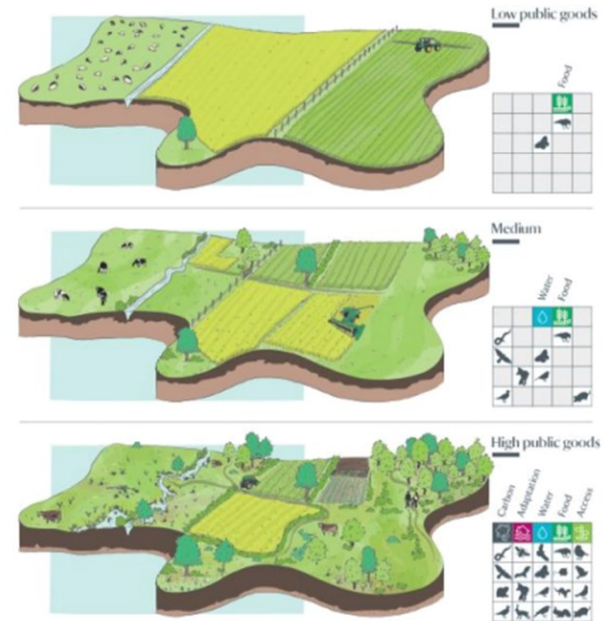


National Trust

High Nature Status Agreement

Holding: Spyway and Verney Farm

Date: April 2021





Restore a 1km+ wide strip of high nature value land from Swanage to Lulworth (c. 25km)

- Work with our tenants – High Nature Status farming
- Work with our neighbours to influence change
- Strategic acquisitions (Weston farm) – to demonstrate the possible

South Purbeck



Nature recovery 'core' areas

marginal, infertile land (~6500 ha)

Land managed for nature, Carbon & people

Restoration of natural processes – more dynamic, complex, resilient landscape

Some food produced (beef, venison) but only as a bi-product



Nature recovery 'support' areas

Moderate (grade 3) farmland (~1700 ha)

Multiple uses including food production

Regenerative farming: good soil management, no chemical inputs

Mixed farmland – delivering wide range of public benefits

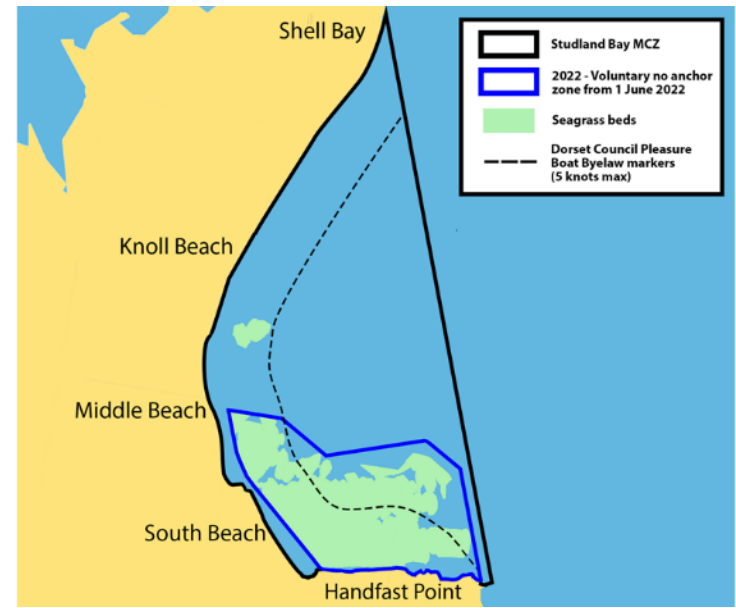
Studland Masterplan



Studland Bay Marine Partnership

We lead partnership in a long-term vision and strategy for marine conservation & recreation

Creating a Community Interest Company with partners to fund and deliver this through others





SHAPING THE FUTURE OF PURBECK
THROUGH OUR ENGAGEMENT WORK

NEWS

[Home](#) | [Cost of Living](#) | [War in Ukraine](#) | [Coronavirus](#) | [Climate](#) | [UK](#) | [World](#) | [Business](#) | [Politics](#) | [Tech](#) | [Science](#)

[England](#) | [Local News](#) | [Regions](#) | [Dorset](#)

Middle Beach Cafe protesters lose National Trust vote

© 25 October 2016



| The National Trust which owns the land, said the cafe is at risk of coastal erosion

Efforts to block plans to tear down a century-old seaside cafe have been rejected by National Trust members.

2016

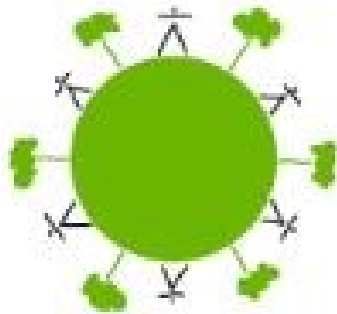
In summer 2019 we took our
plans for nature around the
parishes



“Build on what we are doing to save nature”



Langton were early adopters led by the local vicar



Langton
Planet
Action

ECO CHURCH
AN A ROCHA UK PROJECT

**Bronze Eco Church
Award Certificate**

This is to certify that

**St George's Church,
Langton Matravers**

has won a Bronze Eco Church Award in recognition of their efforts
to care for God's earth in each of the following areas (as applicable)

Worship and Teaching
Management of Buildings and Land
Community and Global Engagement
Lifestyle

Signed *Andy Atkins* Date **22nd January 2021**
CEO, A Rocha UK



Work that we had begun in Swanage accelerated

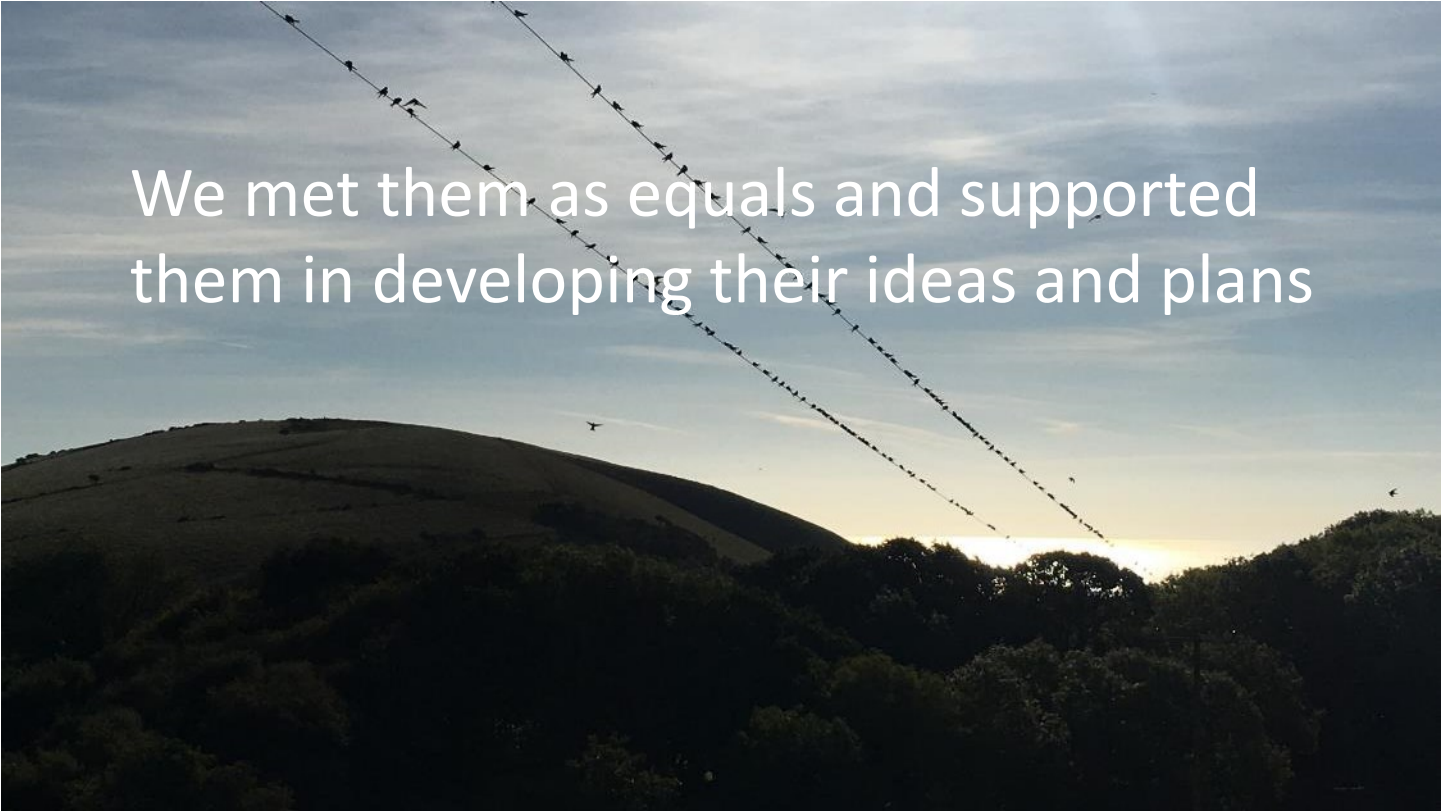


And then Corfe got in on the act.

CORFE CASTLE PARISH COUNCIL ENVIRONMENT GROUP



Meets every 3rd Thursday of the Month, COME ALONG, ALL WELCOME!

A landscape photograph showing rolling hills under a sunset sky. Two long strings of birds are flying across the sky, one above the other, moving from the top left towards the bottom right. The sun is setting behind a ridge of trees in the distance, creating a bright glow. The foreground hills are dark and silhouetted.

We met them as equals and supported
them in developing their ideas and plans

But then covid...



And our whole wide world went

zoom

Planet Purbeck was formed during the early dark days of the pandemic.





We were early adopters, leading others to support them...





With a land use team led by the daughters of long standing farming families in Purbeck

Suddenly the voiceless had a voice

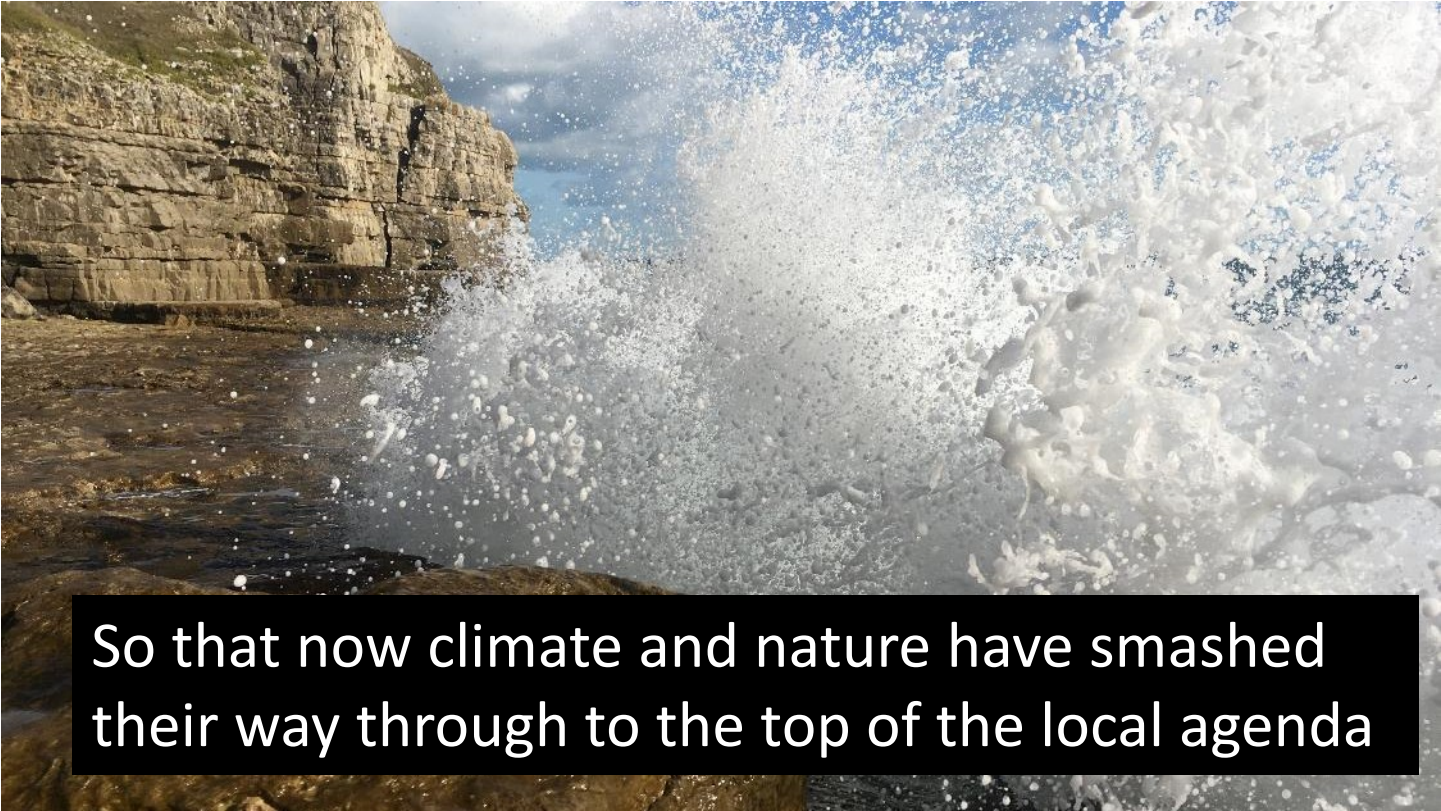
Purbeck School visit to Studland

In 2050 I want Purbeck to be a place where:

wildlife still exists and I can live
peacefully

Write three words alongside each topic that will be impacted by a changing climate that illustrates what you would want to see more or less of by 2050.

	More	Less



So that now climate and nature have smashed their way through to the top of the local agenda



2021



2022



2022



2022



How we got here



TALK & LISTEN,
BE THERE,
FEEL CONNECTED



DO WHAT YOU CAN.
ENJOY WHAT YOU DO.
MOVE YOUR MOOD



REMEMBER
THE SIMPLE
THINGS THAT
GIVE YOU JOY



EMBRACE NEW
EXPERIENCES.
SEE OPPORTUNITIES.
SURPRISE YOURSELF



Your time,
your words,
your presence

How we got here

- Networking
- Delivery
- Enabling
- Creating and selling vision of a better future for nature and Purbeck's people.

23 November 2022

Rap and hip-hop project finale



A group of 30 or so Performing Arts students have been incredibly fortunate to benefit from a project involving rapper Isaiah Dreads and hip-hop dance specialist Isaac Farmer. The project has been run by Activate Performing Arts, who have formed a partnership with the National Trust to produce 'Performing Dunescapes' as part of the Trust's national project 'Dynamic Dunescapes'.

Performing Dunescapes is based in Purbeck and sees Isaiah and Isaac lead movement and music workshops with young people, using the sand dunes at Studland as inspiration. Students met both artists to hear about their work and



st_marks_swanage



Liked by [charwhite](#) and [others](#)

[st_marks_swanage](#) What an amazing day we had showcasing our amazing school! ❤️👉❤️👉

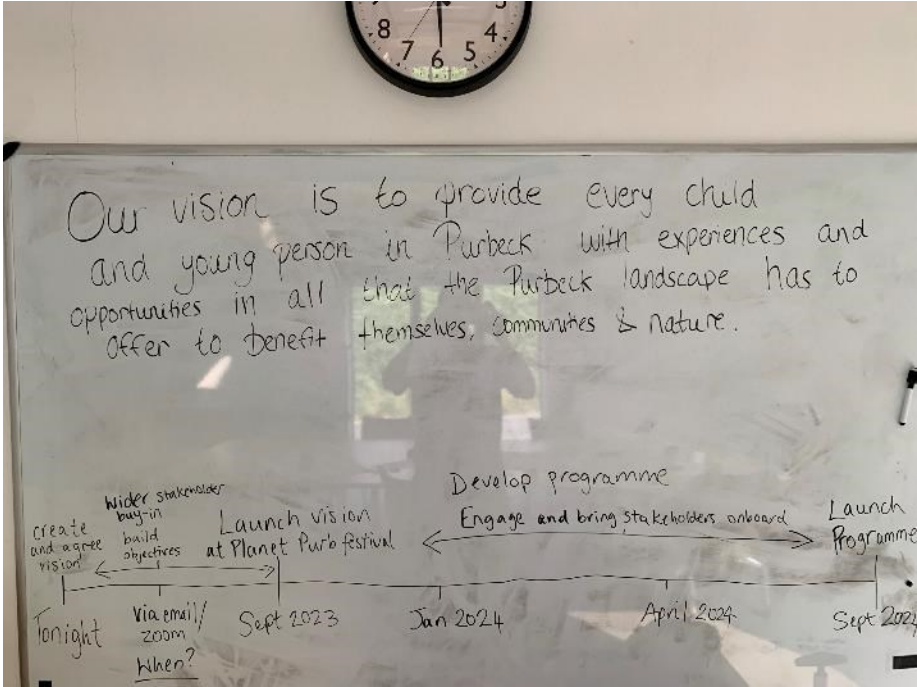
Today, Sibyl - the High Sheriff of Dorset met our pupils and staff, The Swanage School staff, pupils and families that have all taken part in the Nature Heals programme; and we discussed what our 3 to 5 year plan, to grow and extend our work within our schools and community.



We are truly blessed and thankful to everyone's support including The National Trust, The Swanage School, Greengage and Swanage Town Council - you are all amazing and help dreams become reality. ❤️👉❤️👉
[@theswanageschool](#) [@nationaltrust](#)

42 minutes ago

CYP – across Purbeck





Our vision is to provide every child and young person (0-25) in Purbeck with the experiences and opportunities that the landscape has to offer.

Travel > News & Advice

Owners of UK beauty spot complain that ‘culturally diverse’ tourists don’t know to treat countryside

Lulworth Estate calls for countryside code after spike in daytrippers led to ‘environmental degradation’

Helen Coffey • Wednesday 24 February 2021 10:56 GMT • [Comments](#)



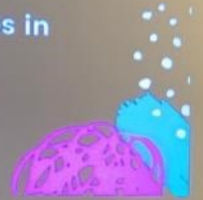
there's never enough time to do nothing.
sandy toes, salty kisses
sun bleached hair, sun



Black and Brown faces in green spaces

DR ANJANA KHATWA

BARONET TRUSTEE
DRUG RESEARCHER
NON-KINDLY SEXUAL HARASSMENT ROLE MODEL FOR SAFE,
FRESH AND HEALTHY



Challenging Prejudice, Celebrating Difference



Working in partnership to promote an Inclusive Dorset

Educating the public on how prejudice affects individuals and communities

Supporting victims and reporting hate

Support networks to prevent crime

dorset.co.uk

SAFE ACCEPTANCE
CARE EQUITY
JUSTICE DIVERSITY
TOGETHER
COLLABORATE INCLUDE
CONFIDENCE
HEALTHY COMMUNITY



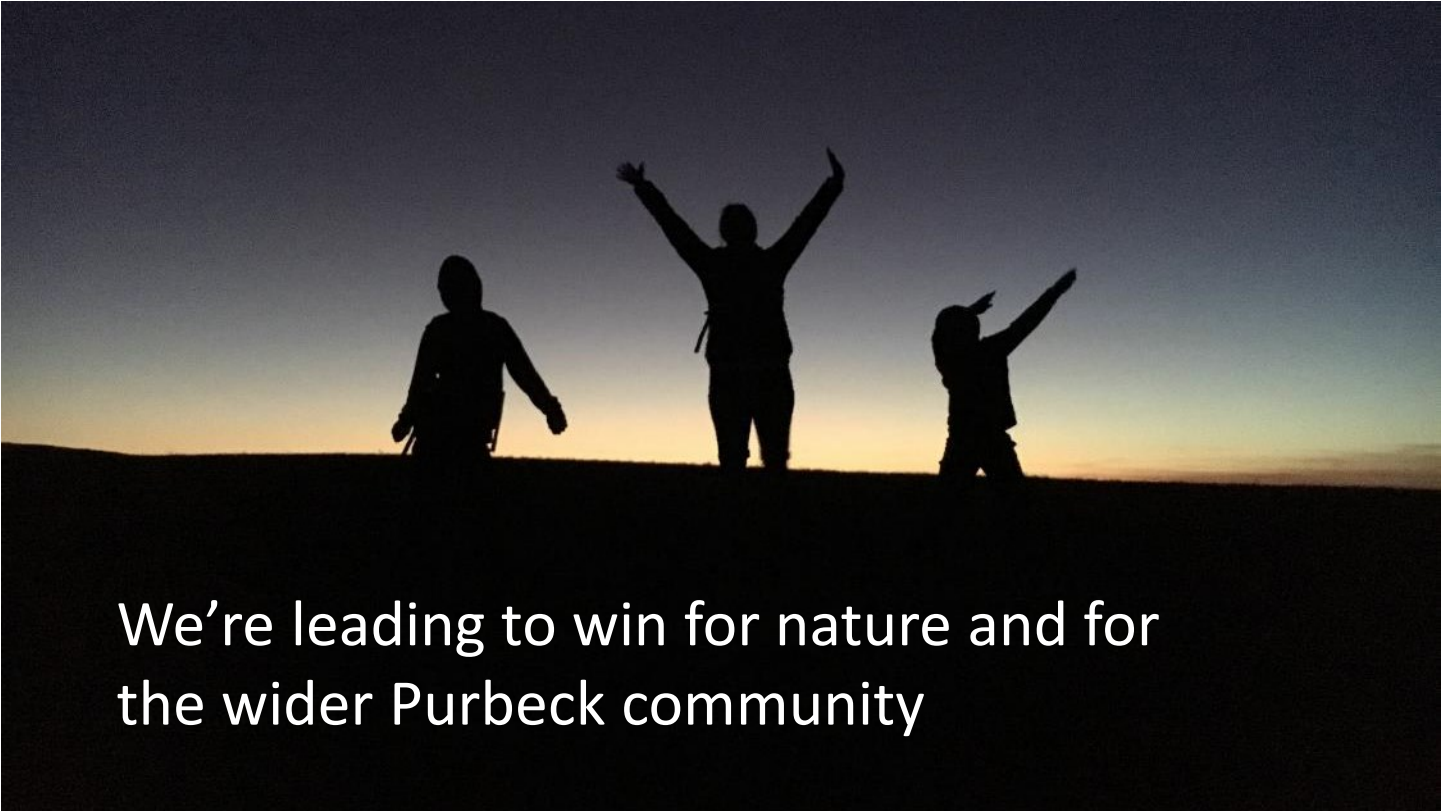








We're visionary authentic leaders...

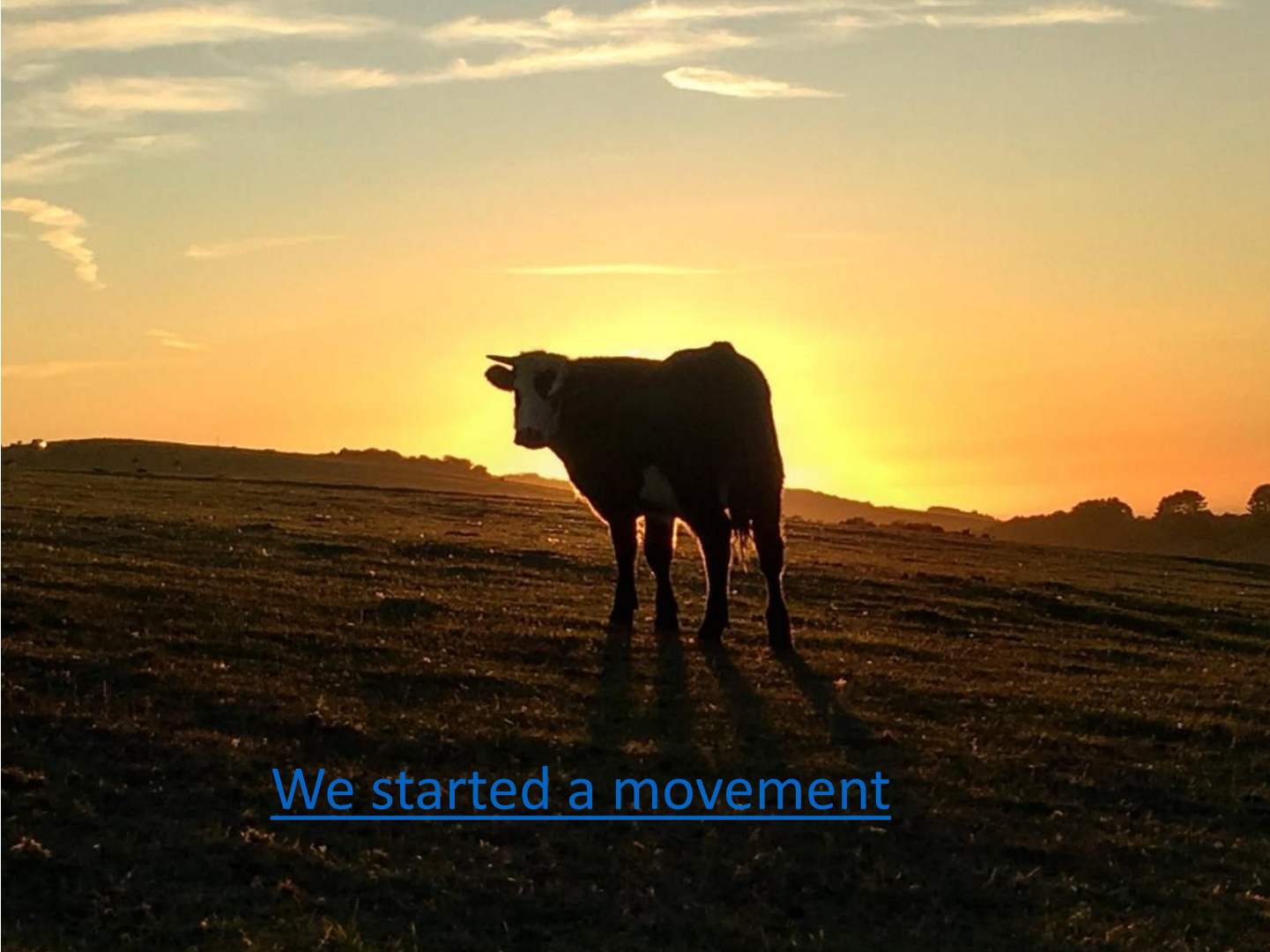


We're leading to win for nature and for
the wider Purbeck community



Where we are going

- Rebuild society based around Purbeck's greatest asset - a nature rich landscape?
- Match ambition for abundance in nature with abundance in opportunities to connect with nature – but also for local people to benefit from it?
- Ensure greater equity in distribution of the benefits from the landscape assets.



We started a movement