



Cannock Chase National Landscape

Annual Conference 2026



**Cannock
Chase**
National
Landscape

Housekeeping



Fire



Toilets



Mobiles



ASK!



Join in!



Welcome

Councillor Tony Pearce
Chair Cannock Chase National Landscape
Joint Committee



**Cannock
Chase**
National
Landscape



Review of the Year



**Cannock
Chase**
National
Landscape



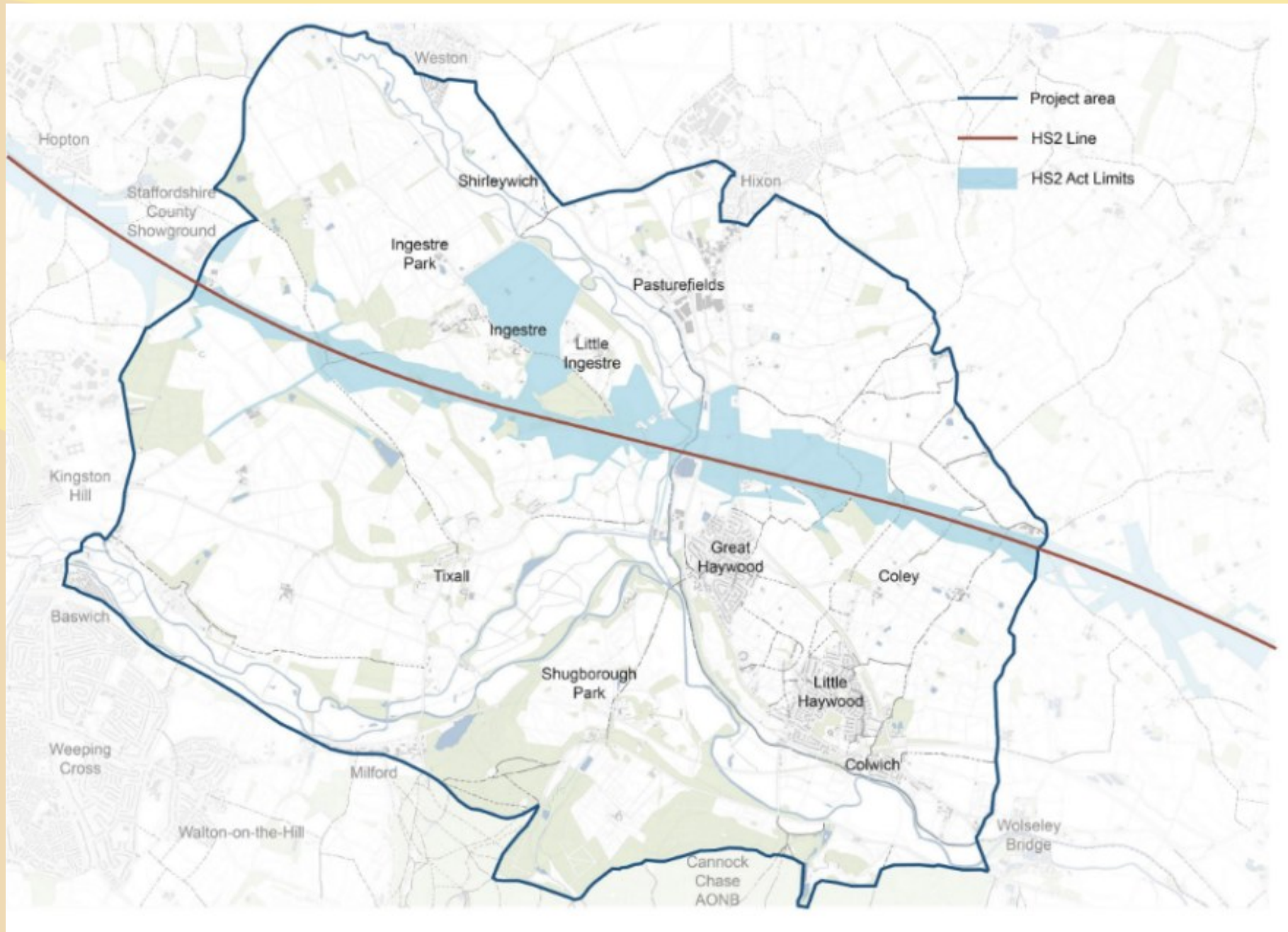
“a wild and beautiful place, distinctive, thriving, resilient and welcoming”



Wild, beautiful and distinctive



**Cannock
Chase**
National
Landscape



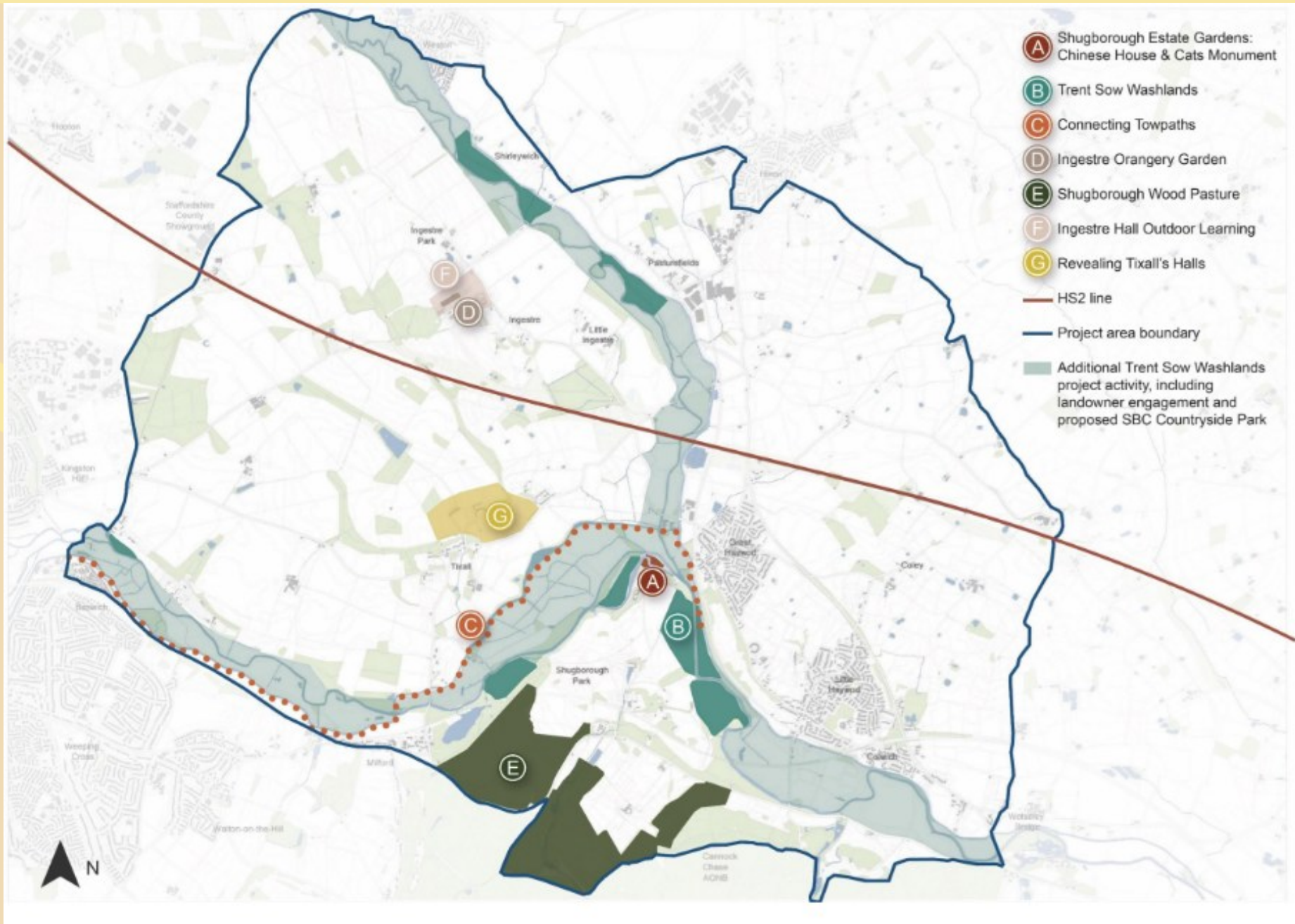
Trent Sow Parklands and Cannock Chase AONB HS2 Group

Oct 2018 – Dec 2025

- Design principles
- Advise and respond to designs
- Environmental Enhancement Plan



Cannock Chase
National Landscape



Environmental Enhancement Plan

£1.5 million

Seven endorsed projects

Five delivered



Connecting Towpaths



Shugborough Woodpasture



Ingestre Orangerie Garden



Trent Sow Washlands



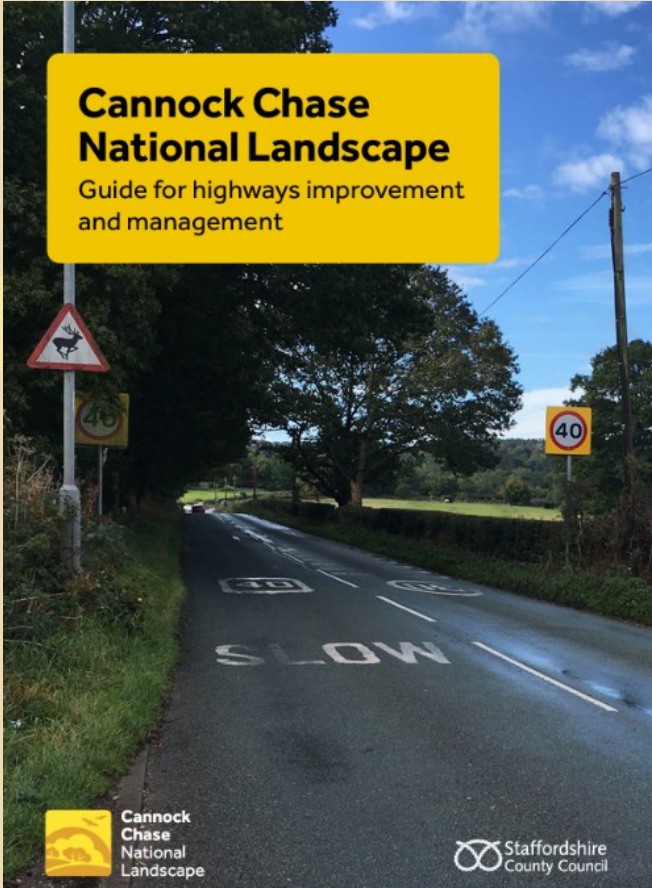
Shugborough Estate Gardens

A strong legacy:

- 90 ha priority habitats created and restored
- 2.44 km of river restored
- 3.75 km of improved access
- 3 historic paths restored
- 16,900 hedgerow shrubs and trees planted
- Restoration of historic structures



In brief...





Thriving and resilient

New equipment to help site managers deliver 30by30



Images on right credit Staffs Wildlife Trust



Images on left credit Cannock Chase Council



Tilt Bed Trailer for UTV

SuDS pods

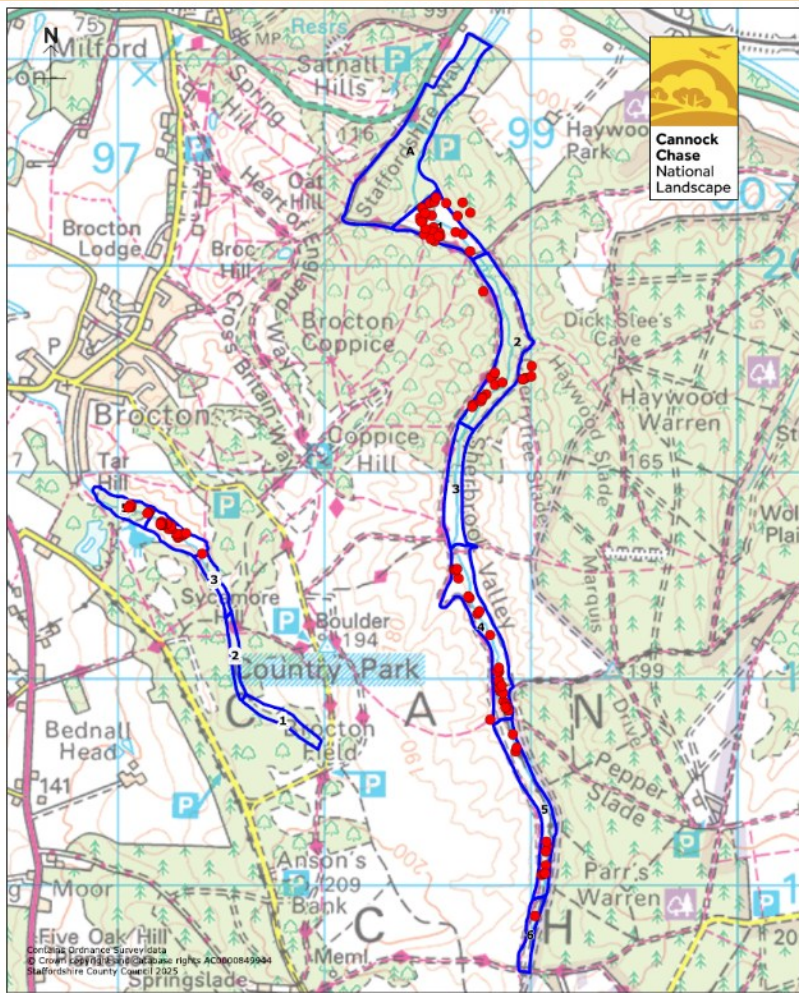


Images credit
Staffordshire
County
Council



**Cannock
Chase
National
Landscape**

Species conservation initiatives



Cannock Chase National Landscape
Marsh Violet Survey 2025

● Marsh violet locations
□ Survey Areas



Images on left & below credit Claire Geoghegan



Date	Compartment Number					Total
	S1	S2	S3	S4	S5	
1999	18					18
2001	20					20
2002	31					31
2003	139	4				143
2004	25					26
2005	80	115			4	199
2006	134	18	61	40	2	255
2007						
2008	32	5	29	9	0	75
2009	15	5	4	3	5	32
Peak 2010	20	9	25	103	17	170
Peak 2011	14	7	6	12	5	42
Peak 2012	20	4	8	8	13	40
Peak 2013	22	2	20	26	8	
Peak 2014	32	1	15	9	8	44
Peak 2015	34	2	23	17	9	
2016						
Peak 2017	17	10	10	4		41
2018						
2019						
2020						
Peak 2021	28		8			36
Peak 2022	20			3	2	25
Peak 2023	23				6	29
Peak 2024	22					22

Deer Management Framework

Cannock Chase deer management



Staffordshire County Council
Staffordshire Wildlife Trust
Forestry England
National Trust



Image Credit: Steve Welch

Fallow Deer on the Chase in poor health
Image Credit: Graham Barratt

Group of Fallow showing browse line and bark stripping, with very limited understorey
Image Credit: Alan Barrell

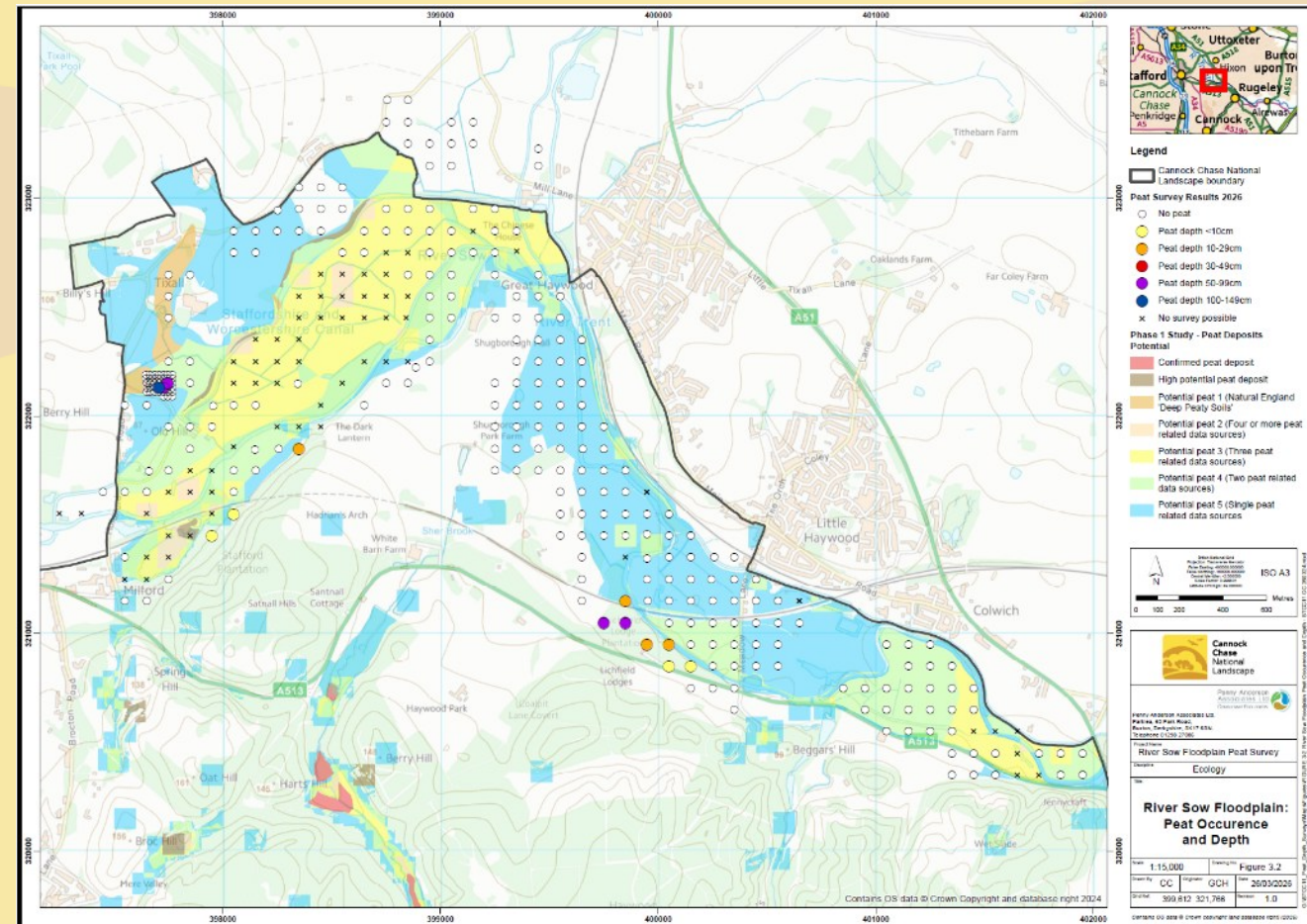
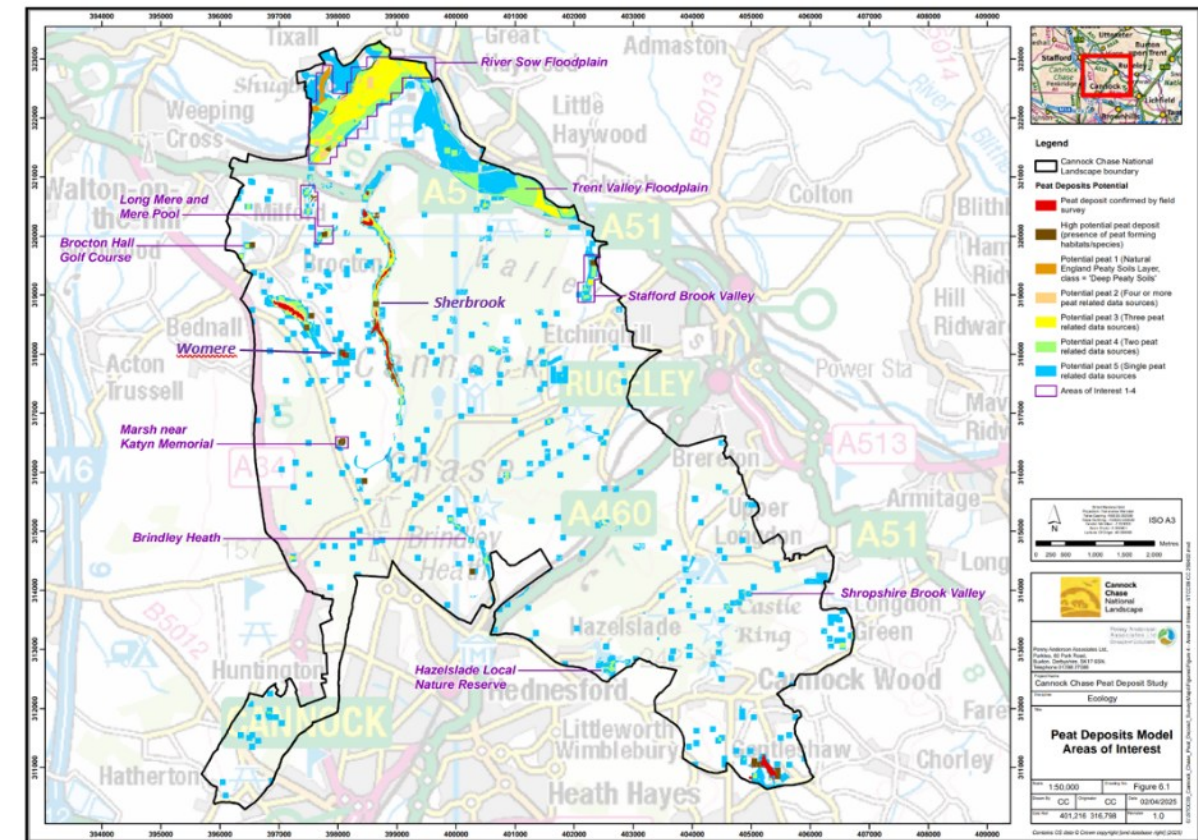


Deer road casualty
Image Credit: Graham Barratt



Peatland survey

Map 1 – Peat Deposits Model Areas of Interest & suggested sites for palaeoenvironmental/palaeoecological study



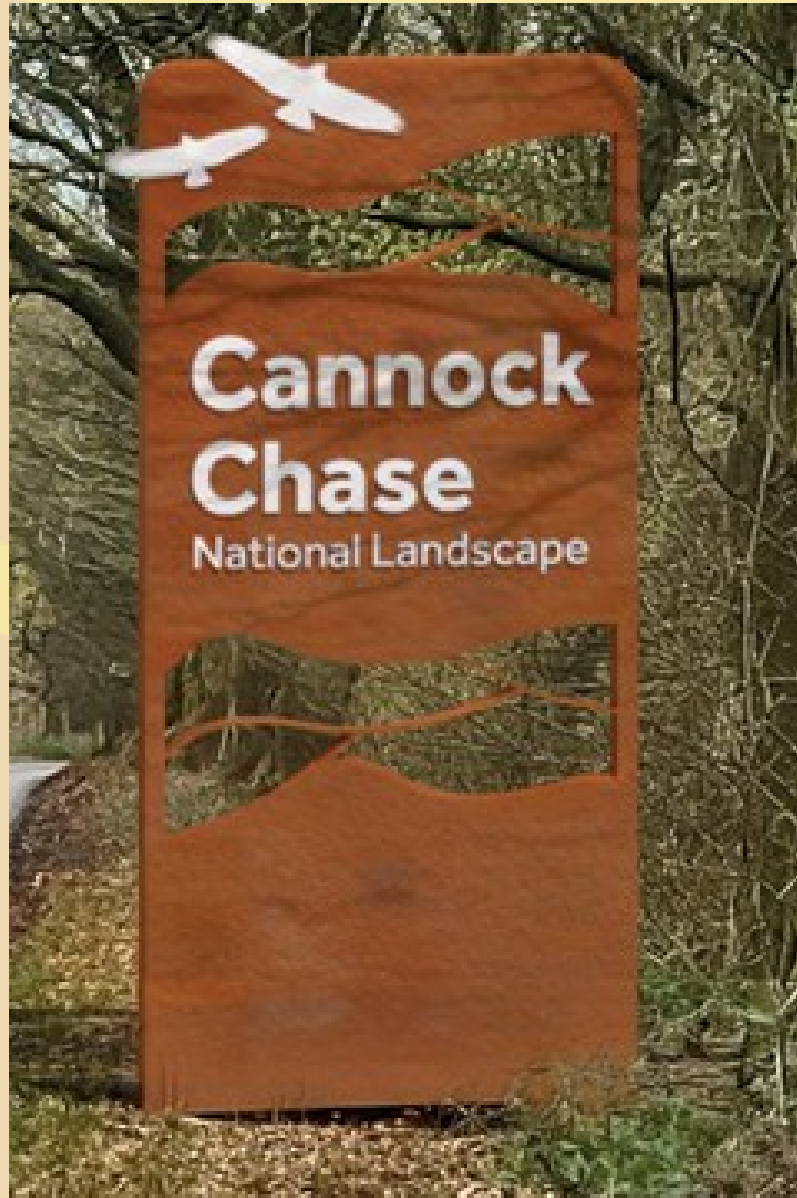
Source: Map adapted from Cannock Chase National Landscape Peat Deposit Survey Phase 1 – Desk Study, Penny Anderson Associates Limited, June 2025.

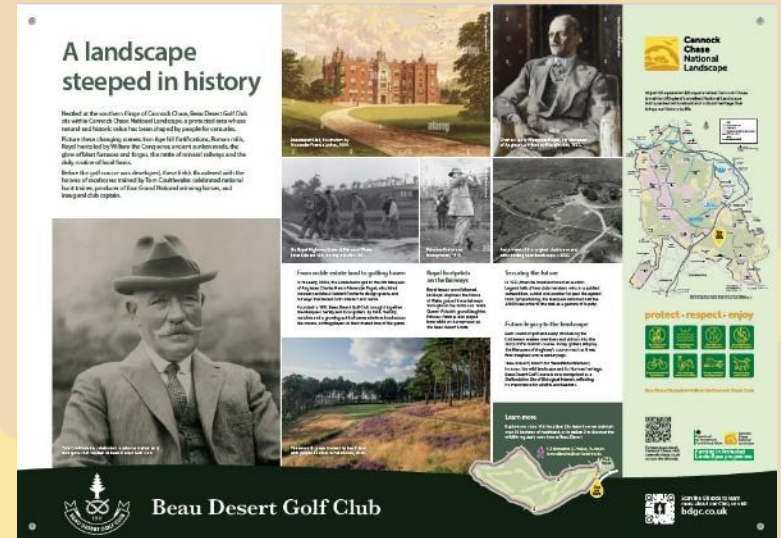
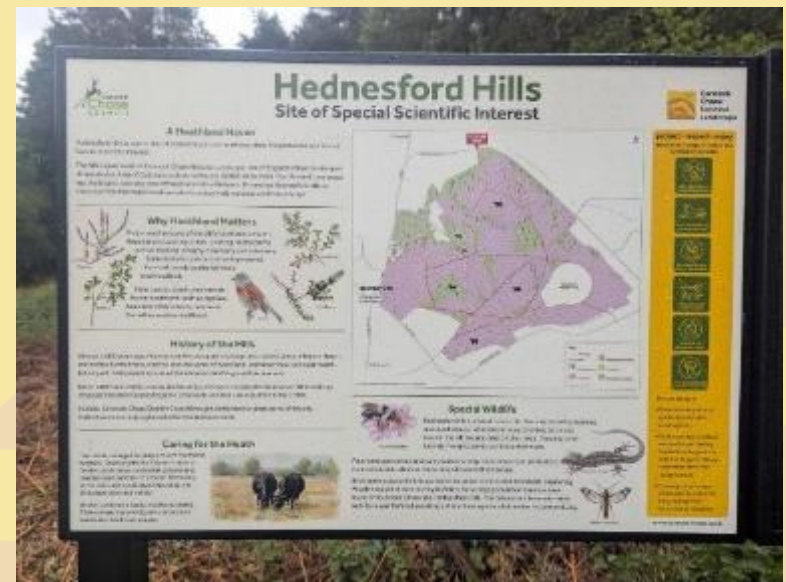
Image Copyright Penny Anderson Associates Ltd

Welcoming



**Cannock
Chase**
National
Landscape

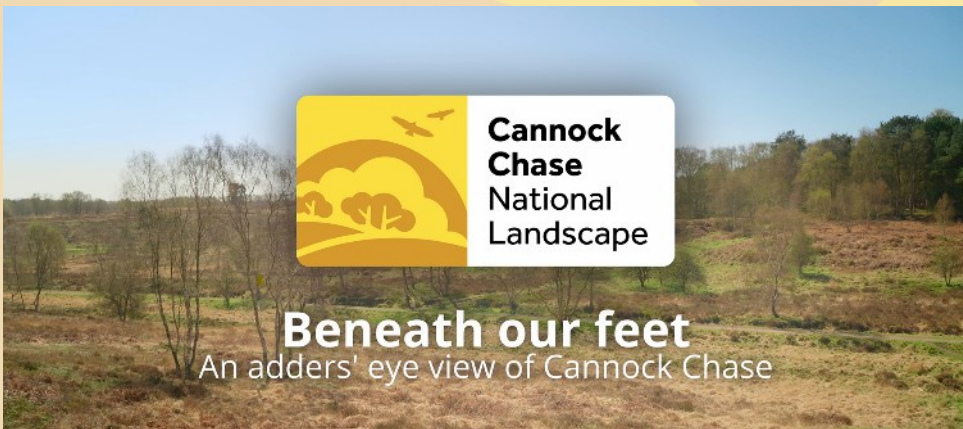




Cannock Chase National Landscape



DISCOVER THE GREAT WAR ON CANNOCK CHASE



Cannock Chase
National Landscape

Beneath our feet
An adders' eye view of Cannock Chase





Cannock
Chase
National
Landscape

[Home](#) [Visit](#) [Our work](#) [About](#) [Get involved](#) [News](#) [Keep in touch](#)



Welcome to Cannock Chase National Landscape

One of England's finest landscapes, with superb walking, cycling and horse riding in a tranquil and peaceful setting.

[Plan your visit →](#)



Cannock
Chase
National
Landscape

Farming in Protected Landscapes

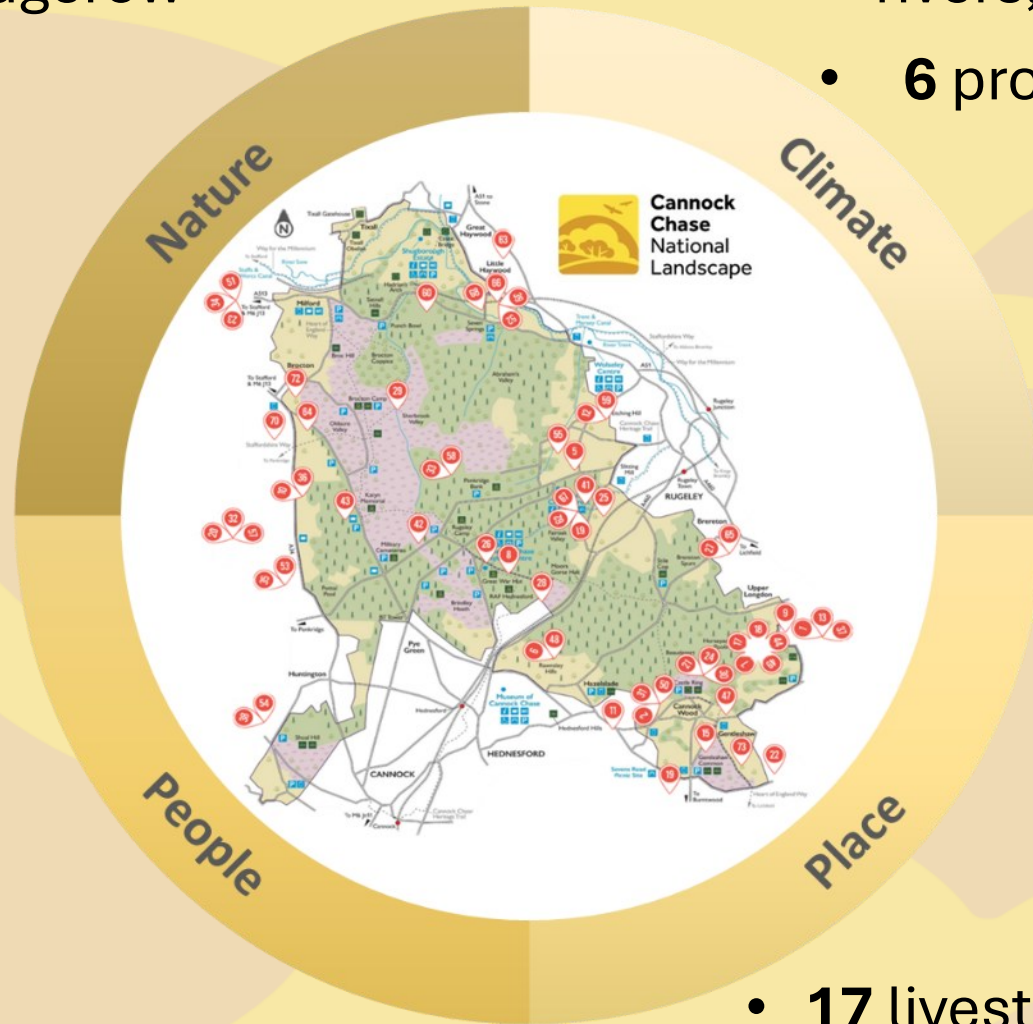


- **762** metres of hedgerow restored
- **2,769** metres of new hedgerow
- **646** trees planted
- **93** wildlife boxes
- **15** hibernacula
- **16** projects targeting **5** priority species
- **4** SSSI's supported

- **15** farm education visits from **10** schools
- **9** permissive routes improved
- **41** volunteers
- **37** community / volunteer days

- **7** projects protecting and enhancing **9** rivers, streams and water bodies
- **6** projects aiding water storage and flood prevention
- **5** projects aiding carbon storage and climate change impacts

- **9** projects to improve inclusivity for visitors
- **7** interpretation panels
 - **27** wooden gates
- **17** livestock water provision actions
 - **14** livestock welfare projects
 - **4** land manager training events



Nature-Climate Case Study: Projects at Navigation Farm, Little Haywood

95 ha landholding, includes flood plains of River Trent, 3 linked projects (plus separate engagement with tenants)



Cannock
Chase
National
Landscape



Navigation Farm (cont)



Priority species and habitat improvements



Priority species and habitat improvements



Beaudesert Park Farm – rotational grazing and conservation



Reinstate field boundaries



Improve between field access



Rare breed goats



Protect water courses



Cattle handling facilities

Beaudesert Park Farm – livestock production and welfare



Water provision



Water troughs



Feeding stations



Portable field shelters



Mobile goat handling system

Beaudesert Park Farm - education




People and Place – practical actions




People and Place – access and education

Gentleshaw Common Northern route

The common is a Site of Special Scientific interest and has rare lowland heathland habitat. Follow the map for a gentle 0.7 mile/1.1km walk around the north of the site.



SCAN HERE







Or visit: staffs-wild.link/walkatgentleshaw for more information and to download a map of the route

What to spot:



- Blue tits and jays in the young oak and birch woodland
- Common heather and bilberry
- Fantastic fungi such as fly agaric and amethyst deceiver
- Speedy green tiger beetles, solitary bees and butterflies

For other seasonal nature to spot, find our information boards at each entrance or visit the route webpage.






Staffordshire Wildlife Trust

protect · respect · enjoy

Farming in Protected Landscapes programme
www.cannock-chase.co.uk



People and Place

The Old Barn CC074 and Pony Paddocks
CC075 (both Shooting Butts Road)
Land off Penkridge Bank Road CC076
Springslade Lodge CC079



People and Place

Heathfields Farm CC089

Land off Penkridge Bank Road,
Rugeley Town 5 footpath before/after.

Partners, Volunteers, Sharing



Coming up in 2026-27

- Recreation Management Strategy
- Super National Nature Reserve
- National Heathland Conference
- NLHF bid for development funding



Questions



**Cannock
Chase**
National
Landscape



The importance of outdoor recreation

Paddy Harrop, Co-Chair Outdoor Recreation Network and Director, Central England, Forestry England

Questions



**Cannock
Chase**
National
Landscape



Networking and visiting exhibitions lunch
